



AVK PRICE LIST  
MAY 2025  
**SOUTHERN AFRICA**

Expect... **AVR**



# WELCOME TO AVK IN SOUTH AFRICA

With 30 years in the South African valve industry, AVK Valves Southern Africa has set the standard for manufacturing valves at the highest levels of quality, reliability and value.

## **Supporting South African made products**

AVK Southern Africa are an active members of the organisation VAMCOSA (Valve & Actuator Manufacturing Cluster of Southern Africa), who is an affiliate member of SACEEC (South African Capital Equipment Export Council), who works closely with the Department Trade, Industry and Competition to educate consumers on the benefits of buying South African - Locally Manufactured products to help strengthen the South African reindustrialisation programme.

AVK International (Denmark) is second-generation family owned business, with AVK Southern Africa located in Alrode, South Africa and is proud to be a part of the local business community, supporting South African manufacturing. Our quality, reliability and cost-effective domestic manufacturing is available to customers looking to eliminate the risks of offshore sourcing.

AVK strive to consistently deliver the most efficient and sustainable high-quality valves, while providing comprehensive value in a globally competitive market and creating an environmentally responsible workplace for our employees and customers.

## **About our company**

AVK Southern Africa was established in South Africa in 1996. Our highly experienced team has led the industry in manufacturing high quality Gate, Butterfly, Tilting Disc, Damper, Non-Return, Ball, Mining Cock and diaphragm control valves for the most demanding industries and applications.

You can be assured that AVK Southern Africa operates at a high level of efficiency and effectiveness supported by our ISO 9001& ISO 45001 Certifications, and our products can be manufactured to meet different International and Local specification requirements (ISO, BS EN, DIN, API, SANS, etc.) when required.



AVK Southern Africa Head Quarters | Alberton, South Africa



# JOIN OUR VALVE COURSES AT THE ACADEMY

Founded in 2016, we offer a professional in-house training facility with comprehensive courses accredited by ECSA (Engineering Council of South Africa).

Located in Alrode, Johannesburg, The Academy showcases an impressive flow lab allowing learners to understand the flow of water through series of different valves and flow processes.

The Academy has launched three different courses since its inception:

## **The Valve Fundamentals Course**

Through this course, candidates will be introduced to essential basic knowledge of valves, in theory and practice.

## **The Advanced Valves Course**

The course provides greater insight into principals and practices that address theories of fluid dynamics and field applications.

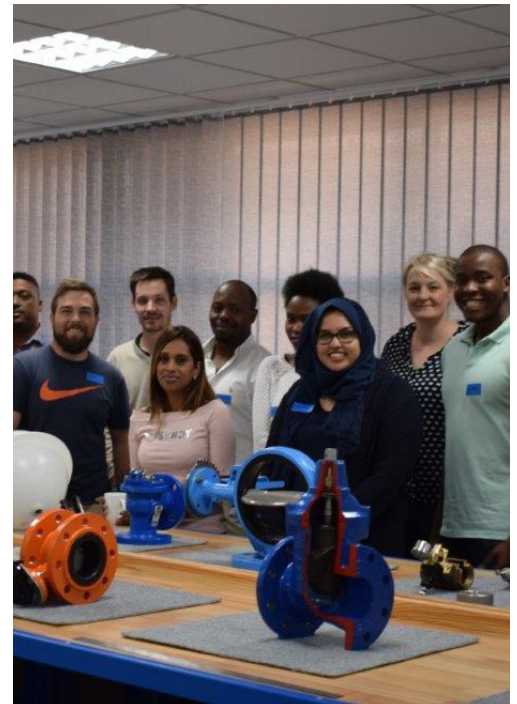
## **The Technical Course**

The Technical Course expands into the mechanical and chemical attack within valves, valve sizing, other causes of valve failures and valve maintenance.

Each course is registered with ECSA and all professionals registered with ECSA earn 2 CPD points on successfully completing each course.

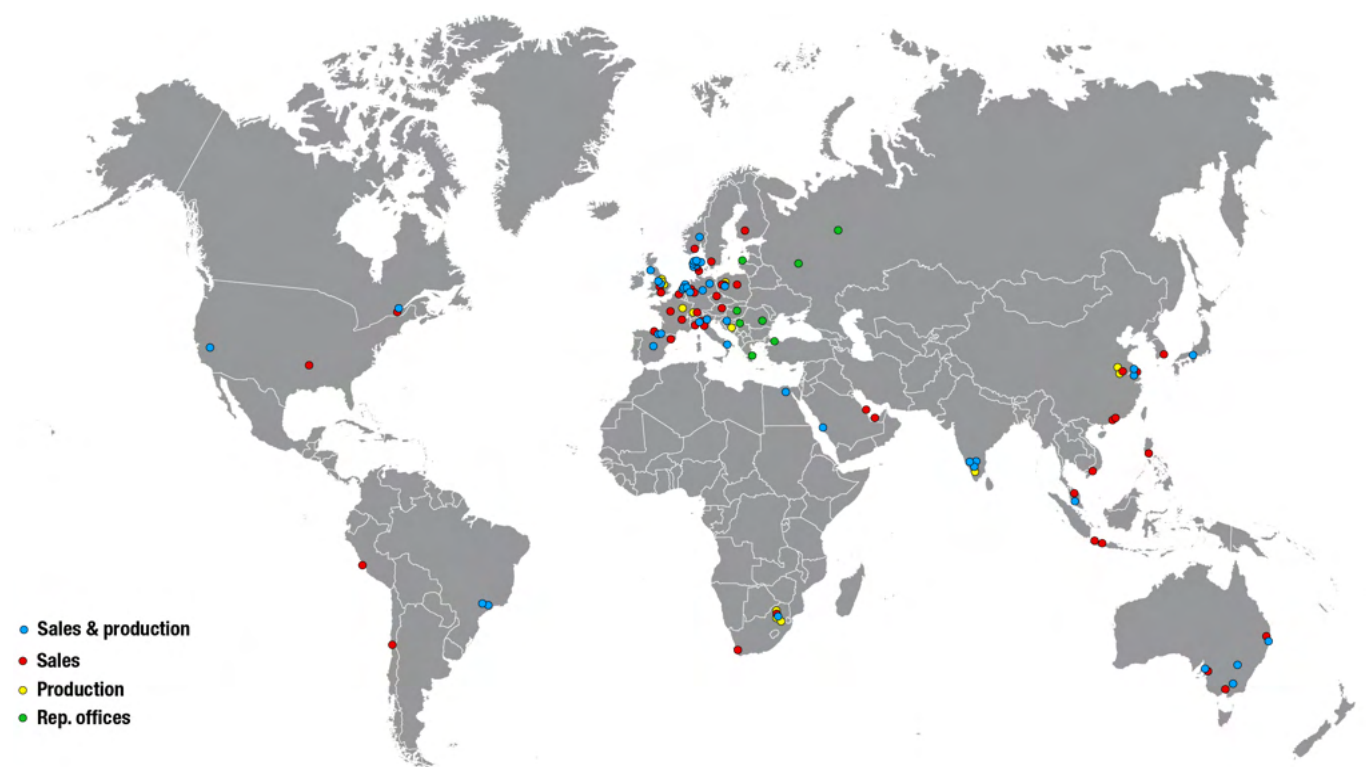
## **Join our courses**

To book your seat, contact us at [academy@avkvalves.co.za](mailto:academy@avkvalves.co.za) or call our offices.



# THE AVK GROUP GLOBAL PRESENCE

The AVK Group is a privately owned industrial group currently comprising +100 companies worldwide. We develop and produce valves, hydrants and accessories for water and gas distribution, sewage treatment and fire protection. Furthermore, AVK has built up strong brands supplying products and solutions for various industrial sectors and within advanced manufacturing. Our products are designed to meet international standards and are sold worldwide. When dealing with the AVK Group expect quality, reliability, functionality and long lifetime in service.



AVK is global in scale when it comes to manufacturing and design. We serve our customers locally, offering full-line partnership and a single entry point to a world of quality solutions.

1941

Established as a local machine shop in Denmark

+5,300

Employees worldwide

+100

Companies in the Group

1,212

Million EUR of turnover



# HOW TO USE THE **PRODUCT FINDER** ON OUR WEBSITE



water supply waste water industrial solutions The Academy more about AVK

Find product

Search

Home / Product finder

## Product finder

Filter

SHOW ALL FILTERS RESET ALL FILTERS COMPARE PRODUCTS

Use ^

Segment v

Application v

Product ^

Category v

Type v

Series v

Technical specifications v

Approvals v

ie. item no., AVK ref. no., industry item no., variant or other

Results 150

AVK GATE VALVE, SOCKET ENDS, PN16

AVK GATE VALVE, FLANGED, PN10/16

AVK GATE VALVE, FLANGED, PN10/16

AVK GATE VALVE, FLANGED, PN10/16

On our website, [avkvalves.co.za](https://avkvalves.co.za), you can browse through our current product offer and search out the exact product you need through the filtering options.

### Segment and Application

In the "Use" filters you can select the overall segment or a specific application that the product should be used for.

### Category, Type and Series

The "Product" filter lets you select either a category (broad search), a type or all the way down to a specific series (narrow search) to give you an easy overview of what we can offer.

### Technical Specifications

Under "Technical Specifications" it is possible to apply filters regarding the desired PN class, Material, Pipe Type, Connection type, Nominal Diameter and Operating Direction.

### Standards and Approvals

The "Standards and Approvals" filter makes it possible to search out products based on the desired Design Standard, Approvals, Face to Face standard and Flange Drilling standard.

# OUR PRODUCT BRANDS

Over its years of operation in the industry, AVK has acquired the following Nationally and Internationally recognised brands that are now part of the AVK Group and contribute to our product package.



Since the establishment of AVK Southern Africa, AVK offers Premier, Gunric, Baker Control, Cementation Engineering (CEM) and IPV (Industrial Petroleum Valves) as part of their local product range that complies to local content designation. International brands including Wouter Witzel, Orbinox, InterApp, ACMO, and Glenfield.



The Gunric brand has built an impressive install base across many market segments for the past 30 years with reliability and quality in tough applications and harsh conditions in water transmission lines, waste water, cooling water in power plants, chemicals, steam and gas applications.



The Cementation high pressure cock valves is a key part for safe underground mining operations and have been supporting the local mining sector for the past 50 years and also offer safety pilot underground de-watering unit cages plus MK V high pressure pumps to seal the deal.



Orbinox have +50 years of experience within designing and manufacturing knife gate valves, penstocks, dampers, and valves for hydraulic work. They think globally, whilst applying their expertise locally in +70 countries. Offering technical expert advice and guidance is one of their important strengths.



Industrial Petroleum Valves' products were designed for heavy duty, difficult and critical applications in mind for the Chemical, Petro-chemical, mining and slurry segments. The first valves were introduced to the market 30 years ago.



The Dutch company Wouter Witzel has been an international player for many years, and develop and produce a wide range of high quality industrial butterfly valves and accessories. Their products are primarily used in pipelines as shut-off valves, control valves and non-return valves.



The Baker brand is a robust design diaphragm hydraulic operated globe type control valve, with various function options i.e. pressure reducing, relief, rate of flow, altitude, level and pump control with dual function combinations available and continue to build on its 50-year legacy. Trusted and recommended for water distribution and pressure reducing stations in mining operations.



AC.MO designs and manufactures hydraulic equipment for water distribution, water transmission, irrigation and water treatment. Their excellence is supported by a high manufacturing capacity and innovative design skills made available to all our technological and institutional partners.



Glenfield are market leaders within their field, and have been designing and manufacturing specialist engineered valves and penstocks for +160 years. Due to the superior quality, they offer some of the best extended warranties in the industry. The company is especially skilled within flood defense solutions, and in specifying and managing the large dams, reservoirs and hydropower schemes.



The Premier brand is well established in the water industry delivering quality products to the local market for over 60 years in water transmission lines, dams, reservoirs, hydropower and cooling water for coal power stations.



With +50 years of experience in developing and manufacturing PTFE-lined and elastomer-lined butterfly valves, InterApp provides reliable solutions for the most demanding industries, applications and projects around the world. Their product portfolio also includes ball valves, check valves, actuators and accessories.



# OUR SEGMENTS IN SOUTHERN AFRICA



## WATER SUPPLY

Water is essential when it comes to running households, industries and business facilities, and reliability and purity is crucial. AVK products are renowned for superior quality, and with our quality rubber compounds, own vulcanisation, coating facilities and worldwide approvals for drinking water, we can ensure maximum safety and durability. We offer an extensive range of valves, hydrants, couplings and accessories.



## WASTEWATER TREATMENT

Wastewater covers water that has been affected by human activities, which compromises of domestic, industrial, commercial or agricultural activities, and rain or stormwater. We deliver a wide range of products made to the highest standards of production, ensuring optimal corrosion resistance and durability, to withstand the toughest conditions.



## INDUSTRIAL WATER TREATMENT

Industrial water treatment implies high pressures, high temperatures, and water with aggressive chemicals. The AVK Group of companies offers you vast experience and expertise, as well as project management capabilities. These capabilities are coupled with valves that meet relevant standards, and come with any type of certificate possibly required.



## ENERGY GENERATION

For any type of energy generation plant, AVK delivers highly specialised engineered products meeting the standards, approvals, performance and quality required worldwide through our global network of AVK sales companies and appointed distributors. Applications include petrochemical, gas distribution and production, coal seam gas, LNG, floating production, storage and operation, fire protection and cooling water.



## MINING & SLURRY

Mining is the extraction of valuable minerals or other materials from the earth from an ore body, lode, vein, seam, reef or placer deposits. The mining industry covers applications such as acid and solvent extraction of metals, slurries and cooling systems. The AVK Group of companies offer products with high quality coatings and heavy duty designs, ideally positioned to serve any application within the mining industries.



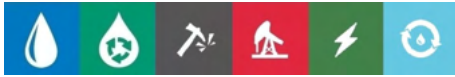
## OIL & GAS

This market requires vast experience and in-depth knowledge of the many applications and processes - both on shore and off shore. Fast and adequate services, combined with a high degree of reliability and durability, are key elements. Applications include hydro power, fluegas desulphurisation, cooling water, steam, waste incineration and renewable energy.





# OUR PRODUCTS



	Gate Valves, Socket Ends	11		Ball Valves, Steel & Stainless Steel	34
	Gate Valves, Resilient Seated	11		Control Valves, Pilot Operated	39
	Gate Valves, Spigot Ends	16		Filters & Strainers	52
	Gate Valves, Metal Seated	16		Cementation	63
	Gate Valve Accessories	18		Hydrants, Underground	67
	Wedge Gate Valves, Metal Seated	19			
	Butterfly Valves with Fixed Liner, Centric	21			
	Butterfly valves, Double Eccentric	25			
	Butterfly Valves, Centric, Triple Offset	29			
	Check Valves, Swing	30			
	Check Valves, Ball	32			
	Check Valves, Tilting Disc	33			

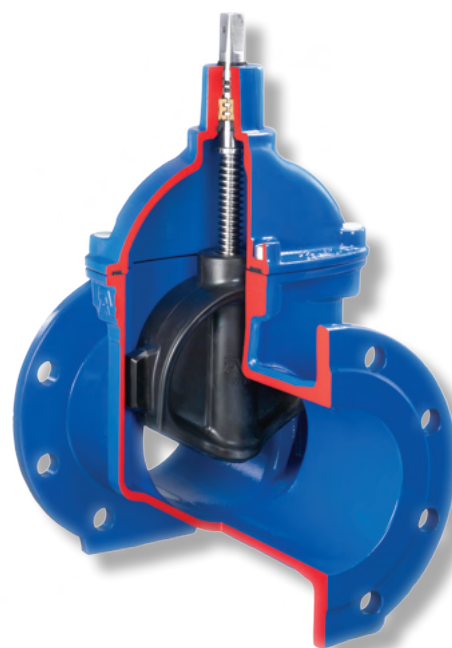
# AVK GATE VALVES

## UNIQUE ADVANTAGES

AVK offers a comprehensive range of gate valves in a variety of connection types, including flanges as well as socket and spigot valves designed for PE, PVC and ductile and A/C pipes. The AVK valves comprise all major standards in a selection of different materials to suit most applications.

### Product features

- Fixed wedge nut prevents vibrations.
- Guiderrails ensure a smooth opening and closing.
- Large drain hole in bottom of wedge prevent stagnant water inside the wedge.
- Stainless steel stem with rolled threads for high strength, smooth operation, and long life.
- Wedge with vulcanized drinking water approved EPDM according to DVGW-W270 ensures prevention of biofilm build-up.
- Vulcanized EPDM rubber with low permanent compression values that are resistance to normal drinking water disinfections.
- Stop ring around the valve stem forms a firm stop in the opening direction and thus preventing direct contact between the inner coating and the wedge.
- Stem seal with three independent sealing systems adds safety and ensures drop tight sealing and long life.
- A brass bearing keeps the stem in place and ensures easy and smooth operation with a low operation and closing torque.
- Bonnet gasket embedded in a groove prevents gasket blow-out due to pressure surge.
- Bonnet bolts embedded in the bonnet and body casting, sealed with hot melt protects the bolts and prevents corrosion.
- Full bore valve secure unrestricted flow path and low pressure-loss.

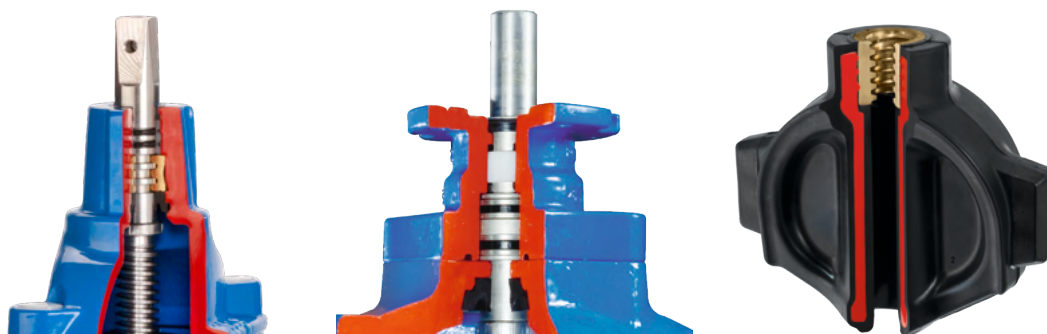


### Fixed wedge nut prevents corrosion build-up

The fixed wedge nut design is superior in comparison to the loose wedge nut design. The fixed wedge nut design prevents vibrations during valve operation, vibrations that eventually would damage the rubber surface on the wedge and expose the ductile core resulting in corrosion.

### Fully vulcanized wedge shoes ensure problem free operation

The wedge shoes are protecting the rubber surface on the wedge during operation as the upstream pressure creates friction between the body and the wedge. The combination of the fixed wedge nut and the guide rails in the body and corresponding wedge shoes, offer a solution that ensures low operation torques and secures long life.



### Updated technology and knowhow from AVK Gummi

AVK Gummi A/S is leading within development and production of rubber compounds. During the production process, a number of tests are performed to ensure optimal compression set values and adhesion of the rubber to the wedge core. Besides function and durability test of the rubber compound, AVK Gummi also provides full traceability of all products.

SCAN/CLICK TO SEE  
OUR OFFER ONLINE





**01/80-036**

Euro groove socket end gate valve, bare shaft, for uPVC pipes. Design to SANS 664 for PN10/16.

Ductile iron  
EPDM drinking water approved  
Blue epoxy RAL 5017 250 µm

Clockwise to Close

Available as locally manufactured



AVK ref. no.	DN mm	Dd mm	PN Class	Theoretical weight/kg	Deliv. code	Gross price ZAR
01-050-80-01433	40	50	PN16	7.0	A	5,612
01-063-80-01433	50	63	PN16	8.0	A	5,556
01-075-80-01433	65	75	PN16	9.0	A	6,407
01-090-80-0143399	80	90	PN16	12	A	6,173
01-110-80-0143399	100	110	PN16	15	A	6,914
01-160-80-0143399	150	160	PN16	29	A	12,253
01-200-80-0143399	200	200	PN16	47	A	18,564
01-250-80-01433	250	250	PN16	80	A	39,144
01-315-80-01433	300	315	PN16	123	B	56,003
01-400-80-01433	400	400	PN16	246	B	97,343

**01/80-045**

Euro groove socket end gate valve, bare shaft, for uPVC pipes. Design to SANS 664 for PN10/16.

Ductile iron  
EPDM drinking water approved  
Blue epoxy RAL 5017 250 µm

Clockwise to Open

Available as locally manufactured



AVK ref. no.	DN mm	Dd mm	PN Class	Theoretical weight/kg	Deliv. code	Gross price ZAR
01-050-80-11433	40	50	PN16	7.0	A	5,612
01-063-80-11433	50	63	PN16	8.0	A	5,556
01-075-80-11433	65	75	PN16	9.0	A	6,900
01-090-80-1143399	80	90	PN16	12	A	6,173
01-110-80-1143399	100	110	PN16	15	A	6,807
01-160-80-1143399	150	160	PN16	29	A	12,338
01-200-80-1143399	200	200	PN16	47	A	18,597
01-250-80-11433	250	250	PN16	80	A	37,099
01-315-80-11433	300	315	PN16	123	A	57,123
01-400-80-11433	400	400	PN16	246	A	98,205

**02/20-032**

Gate valve, EN558/3 (BS), PN10/16, bare shaft  
Face-to-face dimension according to EN 558, Series 3

Ductile iron  
EPDM rubber  
Blue epoxy RAL 5017 250 µm

Clockwise to Close

Available as locally manufactured



AVK ref. no.	DN mm	Flange drilling	Theoretical weight/kg	Deliv. code	Gross price ZAR
02-050-20-014339	50	PN16	9.0	B	5,843
02-065-20-014339	65	PN16	11	B	6,490
02-080-20-014339	80	PN16	15	B	6,355
02-100-20-014339	100	PN16	18	B	7,402
02-150-20-014339	150	PN16	32	B	12,320
02-200-20-014339	200	PN16	50	B	18,467
02-250-20-014339	250	PN16	82	C	35,250
02-300-20-014337	300	PN16	96	C	51,580
02-350-20-01433	350	PN16	165	C	92,930
02-400-20-01433	400	PN16	176	C	88,522

**02/20-042**

Gate valve, bare shaft, SABS approved. Design to SANS 665 for PN10/16. Non-rising spindle, bare shaft  
Face-to-face dimension according to EN 558, Series 3

Ductile iron  
EPDM rubber  
Blue epoxy RAL 5017 250 µm

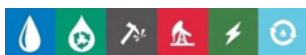
Clockwise to Open

Available as locally manufactured



AVK ref. no.	DN mm	Flange drilling	Theoretical weight/kg	Deliv. code	Gross price ZAR
02-050-20-114339	50	PN16	8.0	B	6,045
02-065-20-114339	65	PN16	10	B	7,186
02-080-20-114339	80	PN16	13	B	6,574
02-100-20-114339	100	PN16	16	B	7,545
02-150-20-114339	150	PN16	28	B	11,720
02-200-20-114339	200	PN16	44	B	19,149
02-250-20-114339	250	PN16	70	C	34,136
02-300-20-114337	300	PN16	97	C	52,758
02-350-20-11433	350	PN16	165	C	87,220
02-400-20-11433	400	PN16	176	C	87,473

\*Face-to-face table refer to page 68



### 06/30-041

Gate valve, bare shaft, SABS approved. Design to EN558 for PN10/16. Non-rising spindle.

Face-to-face dimension according to DIN 3202 - F4  
Ductile iron

EPDM drinking water approved

Blue epoxy RAL 5017 250 µm

Clockwise to Close

Larger sizes available on request

Available as locally manufactured



AVK ref. no.	DN mm	Flange drilling	Theoretical weight/kg	Deliv. code	Gross price ZAR
06-050-30-0143399	50	PN16	9.0	A	5,992
06-065-30-0143399	65	PN16	11	A	6,869
06-080-30-0143399	80	PN16	14	A	6,648
06-100-30-0143399	100	PN16	17	A	7,112
06-150-30-0143399	150	PN16	31	A	12,310
06-200-30-0143399	200	PN16	48	A	18,148
06-250-30-0143399	250	PN16	78	A	35,074
06-300-30-0143387	300	PN16	111	A	48,100
06-350-30-01433	350	PN16	220	A	84,467
06-400-30-01433	400	PN16	240	A	88,338

### 06/30-042

Gate valve, bare shaft, SABS approved. Design to EN558 for PN16. Non-rising spindle.

Face-to-face dimension according to DIN 3202 - F4  
Ductile iron

EPDM drinking water approved

Blue epoxy RAL 5017 250 µm

Clockwise to Open

Larger sizes available on request

Available as locally manufactured



AVK ref. no.	DN mm	Flange drilling	Theoretical weight/kg	Deliv. code	Gross price ZAR
06-050-30-1143399	50	PN16	9.0	A	5,992
06-065-30-1143399	65	PN16	11	A	6,754
06-080-30-1143399	80	PN16	14	A	6,648
06-100-30-1143399	100	PN16	17	A	7,004
06-150-30-1143399	150	PN16	31	A	12,395
06-200-30-1143399	200	PN16	48	A	18,181
06-250-30-1143399	250	PN16	78	A	32,987
06-300-30-1143387	300	PN16	111	A	46,971
06-350-30-11433	350	PN16	220	A	82,219
06-400-30-11433	400	PN16	240	A	86,005

### 21/34-003

Gate valve to BS standard, EN1092 flange, act. flange, OS&Y, hand wheel

Face-to-face dimension according to EN 558, Series 3

Ductile iron

EPDM rubber, WRAS, W270 appr.

Fusion bonded epoxy coating to DIN 3476-1 and EN 14901, GSK approved

Clockwise to Close



AVK ref. no.	DN mm	Flange drilling	Theoretical weight/kg	Deliv. code	Gross price ZAR
21-050-34-4143064	50	PN10/16	14	A	6,872
21-080-34-4143064	80	PN10/16	21	A	8,200
21-100-34-4143064	100	PN10/16	24	A	8,638
21-150-34-4143064	150	PN10/16	41	A	12,672
21-200-34-4143064	200	PN16	66	A	18,896
21-250-34-4143064	250	PN16	135	A	29,086
21-300-34-4143064	300	PN16	135	A	37,483
21-350-34-4043064	350	PN10	203	C	73,853
21-350-34-4143064	350	PN16	233	A	73,846
21-400-34-4143064	400	PN16	239	A	75,574

### 21/60-004

Resilient seat gate valve, replaceable stem seal and stainless steel stem, PN25

Face-to-face dimension according to EN 558, Series 3

Ductile iron

EPDM rubber wedge, WRAS appr.

Fusion bonded epoxy to DIN 3476-1 and EN 14901

Clockwise to Close



AVK ref. no.	DN mm	Flange drilling	Theoretical weight/kg	Deliv. code	Gross price ZAR
21-050-60-074	50	PN25	17	A	9,138
21-080-60-074	80	PN25	18	A	10,493
21-100-60-074	100	PN25	28	A	15,139
21-150-60-074	150	PN25	47	A	19,200
21-200-60-074	200	PN25	76	A	29,382
21-250-60-074	250	PN25	116	C	46,348
21-300-60-074	300	PN25	188	A	81,821

\*Face-to-face table refer to page 68

**21/60-031**

Flanged gate valve to BS EN 1074-2 / BS 5163-1 type B

Face-to-face dimension according to EN 558, Series 3

Ductile iron

EPDM rubber wedge, WRAS appr.

Fusion bonded epoxy to DIN 3476-1 and EN 14901

Clockwise to Open



AVK ref. no.	DN mm	Flange drilling	Theoretical weight/kg	Deliv. code	Gross price ZAR
21-050-60-174	50	PN25	17	C	7,209
21-100-60-174	100	PN25	28	C	8,711
21-150-60-174	150	PN25	47	C	12,913
21-200-60-174	200	PN25	76	C	21,894
21-250-60-174	250	PN25	116	C	49,991
21-300-60-174	300	PN25	188	C	48,472

**43/60-021**

Gate valve, bare shaft, SABS Approved., Design to SANS 664 for PN10/16. Non-rising spindle

Face-to-face dimension according to SANS 664

Ductile iron

EPDM rubber

Clockwise to Close

Locally assembled



AVK ref. no.	DN mm	PN Class	Theoretical weight/kg	Deliv. code	Gross price ZAR
43-050-60-01433	50	PN16	16	A	6,307
43-080-60-01433900	80	PN16	16	A	6,917
43-080-60-08433900 <sup>(1)</sup>	80	PN16	16	A	6,917
43-100-60-01433900	100	PN16	22	A	7,953
43-100-60-08433900 <sup>(1)</sup>	100	PN16	22	A	7,673
43-150-60-01433900	150	PN16	38	A	12,725
43-200-60-00433900	200	PN10	52	A	19,760
43-200-60-01433900	200	PN16	52	A	20,564
43-250-60-00433	250	PN10	110	A	37,357
43-250-60-01433	250	PN16	110	A	38,212
43-300-60-00433	300	PN10	137	A	55,107
43-300-60-01433	300	PN16	137	A	53,250
43-350-60-00433900	350	PN10	212	B	81,560
43-350-60-01433900	350	PN16	212	B	85,276
43-400-60-00433900	400	PN10	224	B	84,240
43-400-60-01433900	400	PN16	224	B	88,353
43-450-60-00433900	450	PN10	450	B	200,809
43-450-60-01433900	450	PN16	450	B	207,685
43-500-60-00433900	500	PN10	485	B	209,811
43-500-60-01433900	500	PN16	485	B	217,627
43-600-60-00433900	600	PN10	681	B	261,039
43-600-60-01433900	600	PN16	681	B	272,174

<sup>(1)</sup> Multidrilling to table 10/16/D

**43/60-022**

Gate valve, bare shaft, SABS Approved., Design to SANS 664 for PN10/16. Non-rising spindle. Table D

Face-to-face dimension according to SANS 664

Ductile iron

EPDM rubber

Clockwise to Close

Locally assembled



AVK ref. no.	DN mm	PN Class	Theoretical weight/kg	Deliv. code	Gross price ZAR
43-050-60-05433	50	PN16	16	A	6,129
43-080-60-05433900	80	PN16	16	A	7,169
43-100-60-05433900	100	PN16	22	A	7,953
43-150-60-05433900	150	PN16	38	A	12,829
43-200-60-05433900	200	PN16	52	A	19,760
43-250-60-05433	250	PN16	110	A	38,624
43-300-60-05433	300	PN16	137	A	53,250

\*Face-to-face table refer to page 68





### 43/60-023

Gate valve, bare shaft, SABS Approved., Design to SANS 664 for PN10/16. Non-rising spindle

Face-to-face dimension according to SANS 664

Ductile iron

EPDM rubber

Clockwise to Open

Locally assembled



AVK ref. no.	DN mm	PN Class	Theoretical weight/kg	Deliv. code	Gross price ZAR
43-050-60-11433	50	PN16	16	A	6,307
43-080-60-11433900	80	PN16	16	A	6,917
43-080-60-18433900 <sup>(1)</sup>	80	PN16	16	A	6,917
43-100-60-11433900	100	PN16	22	A	7,846
43-100-60-18433900 <sup>(1)</sup>	100	PN16	22	A	7,565
43-150-60-11433900	150	PN16	38	A	12,832
43-200-60-10433900	200	PN10	52	A	19,793
43-200-60-11433900	200	PN16	52	A	20,597
43-250-60-10433	250	PN10	110	A	35,225
43-250-60-11433	250	PN16	110	A	36,080
43-300-60-10433	300	PN10	137	A	55,107
43-300-60-11433	300	PN16	137	A	53,250
43-350-60-10433900	350	PN10	212	B	82,233
43-350-60-11433900	350	PN16	212	B	85,950
43-400-60-10433900	400	PN10	224	B	84,913
43-400-60-11433900	400	PN16	224	B	88,717
43-450-60-10433900	450	PN10	450	B	200,809
43-450-60-11433900	450	PN16	450	B	207,685
43-500-60-10433900	500	PN10	485	B	208,557
43-500-60-11433900	500	PN16	485	B	217,627
43-600-60-10433900	600	PN10	681	B	261,039
43-600-60-11433900	600	PN16	681	B	272,174

<sup>(1)</sup> Multidrilling to table 10/16/D

### 43/60-024

Gate valve, bare shaft, SABS Approved., Design to SANS 664 for PN10/16. Non-rising spindle. Table D

Face-to-face dimension according to SANS 664

Ductile iron

EPDM rubber

Clockwise to Open

Locally assembled



AVK ref. no.	DN mm	PN Class	Theoretical weight/kg	Deliv. code	Gross price ZAR
43-050-60-15433	50	PN16	16	A	6,129
43-080-60-15433900	80	PN16	16	A	7,169
43-100-60-15433900	100	PN16	22	A	7,845
43-150-60-15433900	150	PN16	38	A	12,741
43-200-60-15433900	200	PN16	52	A	19,793
43-250-60-15433	250	PN16	110	A	36,492
43-300-60-15433	300	PN16	137	A	53,250

### 43/60-025

Gate valve, bare shaft, SABS Approved., Design to SANS 664 for PN10/16. Non-rising spindle

Face-to-face dimension according to SANS 664

Ductile iron

EPDM rubber

Clockwise to Close

Locally manufactured



AVK ref. no.	DN mm	PN Class	Theoretical weight/kg	Deliv. code	Gross price ZAR
43-050-60-0143300000008	50	PN16	16	C	9,133
43-080-60-0143390000008	80	PN16	16	C	10,367
43-080-60-0843390000008	80	PN16	16	C	10,367
43-100-60-0143390000008	100	PN16	22	C	11,749
43-100-60-0843390000008	100	PN16	22	C	11,748
43-150-60-0143390000008	150	PN16	38	C	16,901
43-200-60-0043390000008	200	PN16	52	C	28,421
43-200-60-0143390000008	200	PN16	52	C	28,421
43-250-60-0043300000008	250	PN16	110	C	51,141
43-250-60-0143300000008	250	PN16	110	C	51,141
43-300-60-0043300000008	300	PN16	137	C	71,857
43-300-60-0143300000008	300	PN16	137	C	71,857

\*Face-to-face table refer to page 68

**43/60-028**

Gate valve, bare shaft, SABS Approved., Design to SANS 664 for PN10/16. Non-rising spindle. Table D

Face-to-face dimension according to SANS 664

Ductile iron

EPDM rubber

Clockwise to Open

Locally manufactured



AVK ref. no.	DN mm	PN Class	Theoretical weight/kg	Deliv. code	Gross price ZAR
43-050-60-1543300000008	50	PN16	16	C	8,584
43-080-60-1543390000008	80	PN16	16	C	10,367
43-100-60-1543390000008	100	PN16	22	C	11,650
43-150-60-1543390000008	150	PN16	38	C	16,978
43-200-60-1543390000008	200	PN16	52	C	28,682
43-250-60-1543300000008	250	PN16	110	C	49,780
43-300-60-1543300000008	300	PN16	137	C	71,857

**43/60-029**

Gate valve, bare shaft, SABS Approved., Design to SANS 664 for PN10/16. Non-rising spindle. Table D. Including TAG

Face-to-face dimension according to SANS 664

Ductile iron

EPDM rubber

Clockwise to Close or  
Clockwise to Open

Locally manufactured



AVK ref. no.	DN mm	Operating Direction	PN Class	Flange drilling	Theoretical weight/kg	Deliv. code	Gross price ZAR
43-050-60-11433000000018	50	CTO	PN16	PN16	16	C	9,405
43-080-60-01433900000018	80	CTC	PN16	PN16	16	C	10,607
43-080-60-05433900000018	80	CTC	PN16	BS10 D	16	C	10,607
43-080-60-11433900000018	80	CTO	PN16	PN16	16	C	11,320
43-100-60-01433900000018	100	CTC	PN16	PN16	22	C	12,119
43-100-60-11433900000018	100	CTO	PN16	PN16	22	C	12,960
43-150-60-01433900000018	150	CTC	PN16	PN16	38	C	17,449
43-150-60-05433900000018	150	CTC	PN16	BS10 D	38	C	17,449
43-150-60-11433900000018	150	CTO	PN16	PN16	38	C	17,376

\*Face-to-face table refer to page 68



### 32/80-021

Spigot groove ended gate valve, bare shaft, for SABS Asbestos pipes. PN16  
Ductile iron  
EPDM rubber  
Clockwise to Close



AVK ref. no.	DN mm	OD mm	Theoretical weight/kg	Deliv. code	Gross price ZAR
32-050-80-01433	50	69	8.0	B	5,263
32-080-80-0143399	80	95	16	B	6,211
32-100-80-0143399	100	122	28	B	7,354
32-150-80-0143399	150	175	47	B	11,892
32-200-80-0143399	200	232	76	B	19,440

### 32/80-022

Spigot groove ended gate valve, bare shaft, for SABS Asbestos pipes. PN16  
Ductile iron  
EPDM rubber  
Clockwise to Open



AVK ref. no.	DN mm	OD mm	Theoretical weight/kg	Deliv. code	Gross price ZAR
32-050-80-11433	50	69	8.0	B	5,263
32-080-80-1143399	80	95	16	B	6,211
32-100-80-1143399	100	122	28	B	7,247
32-150-80-1143399	150	175	47	C	10,988
32-200-80-1143399	200	232	76	C	19,473

### 32/82-021

Spigot groove ended gate valve, bare shaft, for SABS Asbestos pipes. PN16  
Ductile iron  
EPDM rubber  
Clockwise to Close



AVK ref. no.	DN mm	PN Class	Theoretical weight/kg	Deliv. code	Gross price ZAR
32-050-82-01433	50	PN16	8.0	A	5,263
32-080-82-0143399	80	PN16	16	A	6,201
32-100-82-0143399	100	PN16	28	A	7,408
32-150-82-0143399	150	PN16	47	A	12,299
32-200-82-0143399	200	PN16	76	A	19,440
32-250-82-01433	250	PN16	122	B	38,000
32-300-82-01433	300	PN16	195	B	54,407

### 32/82-022

Spigot groove ended gate valve, bare shaft, for SABS Asbestos pipes. PN16  
Ductile iron  
EPDM rubber  
Clockwise to Open



AVK ref. no.	DN mm	PN Class	Theoretical weight/kg	Deliv. code	Gross price ZAR
32-050-82-11433	50	PN16	8.0	A	5,263
32-080-82-1143399	80	PN16	16	A	6,201
32-100-82-1143399	100	PN16	28	A	7,300
32-150-82-1143399	150	PN16	47	A	11,825
32-200-82-1143399	200	PN16	76	A	19,473
32-250-82-11433	250	PN16	122	A	35,243
32-300-82-11433	300	PN16	195	B	53,402

### 37/50-004

Metal seat gate valve for drinking water and neutral liquids to max. 70°C  
Face-to-face dimension according to EN 558, Series 3  
Ductile iron  
Clockwise to Close



AVK ref. no.	DN mm	PN Class	Flange drilling	Theoretical weight/kg	Deliv. code	Gross price ZAR
37-050-50-010001	50	PN16	PN16	11	C	13,237
37-080-50-010001	80	PN16	PN16	21	C	15,613
37-100-50-010001	100	PN16	PN16	27	C	19,976
37-150-50-010001	150	PN16	PN16	43	C	31,567
37-200-50-010001	200	PN16	PN16	76	C	50,235
37-250-50-010001	250	PN16	PN16	105	C	77,680
37-300-50-010001	300	PN16	PN16	159	C	98,474

### 37/80-003

Metal seat gate valve for water and neutral liquids to max. 70°C  
Face-to-face dimension according to EN 558, Series 19  
Ductile iron  
Clockwise to Close



AVK ref. no.	DN mm	PN Class	Flange drilling	Theoretical weight/kg	Deliv. code	Gross price ZAR
37-050-80-070001	50	PN25	PN25	20	A	15,866
37-080-80-070001	80	PN25	PN25	24	A	19,673
37-100-80-070001	100	PN25	PN25	33	A	25,585
37-150-80-070001	150	PN25	PN25	56	A	40,964
37-200-80-070001	200	PN25	PN25	86	A	72,539

\*Face-to-face table refer to page 68





#### 04/15-001

T-key for gate valves  
Steel  
AVK coating standard



AVK ref. no.	Valve DN mm	F mm	Theoretical weight/kg	Deliv. code	Gross price ZAR
04-050-2100 <sup>(1)</sup>	40 - 600	28	2.7	C	2,600

<sup>(1)</sup> For gate valves with stem cap or extension spindle with key adaptor # 23-32

#### 04/22-001

Stem cap for valves and  
extension spindles  
Ductile iron  
AVK coating standard



AVK ref. no.	DN/DN	F mm	Theoretical weight/kg	Deliv. code	Gross price ZAR
08-040-61-000 <sup>(1)</sup>	40 - 50	30	0.2	A	151
08-065-61-000 <sup>(1)</sup>	65 - 80	30	1.0	A	324
08-100-61-000 <sup>(1)</sup>	100 - 150	30	0.6	A	279
08-200-61-000 <sup>(1)</sup>	200 - 200	30	0.7	A	583
08-250-61-000 <sup>(1)</sup>	250 - 300	30	1.1	A	513
08-400-61-000 <sup>(1)</sup>	350 - 500	30	1.1	A	737
55-500-18-000 <sup>(2)</sup>	450 - 600	32	3.5	C	672

<sup>(1)</sup> With bolt in stainless steel, A2 for standard gate valves

<sup>(2)</sup> For series 55/30 gate valves, ø40 mm

#### 08/A-004

Handwheel assembled with  
bolt and washer  
Cast Iron  
AVK coating standard  
Clockwise to Close



AVK ref. no.	DN/DN	D mm	Theoretical weight/kg	Deliv. code	Gross price ZAR
08-250-02-000	250 - 300	500	8.6	A	3,473
08-400-01-000 <sup>(1)</sup>	350 - 500	640	15	A	5,123
08-600-01-000 <sup>(2)</sup>	450 - 600	800	20	A	8,153
08-600-03-000 <sup>(3)</sup>	450 - 600	800	20	A	3,912

<sup>(1)</sup> Square stem

<sup>(2)</sup> CTC, for series 06 and 46, ø30

<sup>(3)</sup> CTC, ø40

#### 08/A-005

Handwheel assembled with  
bolt and washer  
Cast Iron  
AVK coating standard  
Clockwise to Open



AVK ref. no.	DN/DN	D mm	Theoretical weight/kg	Deliv. code	Gross price ZAR
08-600-06-000 <sup>(1)</sup>	450 - 600	800	20	A	5,525

<sup>(1)</sup> CTO, for series 06 and 46, ø30

#### 08/A-014

Handwheel assembly with  
bolt and washer, for low-  
torque gate valves  
Cast Iron  
Blue epoxy RAL 5017 250  
µm  
Clockwise to Close or  
Clockwise to Open



AVK ref. no.	DN/DN	D mm	Theoretical weight/kg	Deliv. code	Gross price ZAR
08-080-66-00000	65 - 80	160	1.0	A	393
08-080-66-00100	65 - 80	160	1.0	A	393
08-100-66-00000	100	200	1.4	A	556
08-100-66-00100	100	200	1.4	A	556
08-150-66-00000	125 - 150	240	1.9	A	666
08-150-66-00100	125 - 150	240	1.9	A	666
08-200-66-00000	200	280	2.2	A	842
08-200-66-00100	200	280	2.2	A	842

### 6133/1-001

Premier Metal Seated Wedge Gate Valve, designed to SANS664, PN10, bare shaft. Non-rising spindle, flat face, bare shaft

Ductile iron

Clockwise to Close or  
Clockwise to Open

Also available in raised face  
Locally manufactured



AVK ref. no.	DN mm	PN Class	Operating Direction	Deliv. code	Gross price ZAR
6133-0100-1-1-2-2-1-00-1-00-00	100	PN10	CTC	C	143,473
6133-0150-1-1-2-2-1-00-1-00-00	150	PN10	CTC	C	164,841
6133-0200-1-1-1-2-1-01-1-00-00	200	PN10	CTO	C	243,319
6133-0200-1-1-2-2-1-01-1-00-00	200	PN10	CTC	C	235,959
6133-0250-1-1-1-2-1-04-1-00-00	250	PN10	CTO	C	276,187
6133-0250-1-1-2-2-1-04-1-00-00	250	PN10	CTC	C	276,187
6133-0300-1-1-2-2-1-11-1-00-00	300	PN10	CTC	C	345,488
6133-0350-1-1-1-2-1-11-1-00-00	350	PN10	CTO	C	476,612
6133-0350-1-1-2-2-1-11-1-00-00	350	PN10	CTC	C	476,612
6133-0400-1-1-1-2-1-11-1-00-00	400	PN10	CTO	C	650,363
6133-0400-1-1-2-2-1-11-1-00-00	400	PN10	CTC	C	650,363
6133-0500-1-1-1-2-1-16-1-00-00	500	PN10	CTO	C	884,269
6133-0500-1-1-2-2-1-16-1-00-00	500	PN10	CTC	C	882,732
6133-0600-1-1-1-2-1-16-1-00-00	600	PN10	CTO	C	1,242,226
6133-0600-1-1-2-2-1-16-1-00-00	600	PN10	CTC	C	1,242,226

### 6133/4-001

Premier Metal Seated Wedge Gate Valve, designed to SANS664, PN16, bare shaft. Non-rising spindle, flat face

Ductile iron

Clockwise to Close or  
Clockwise to Open

Also available in raised face  
Locally manufactured



AVK ref. no.	DN mm	PN Class	Operating Direction	Deliv. code	Gross price ZAR
6133-0100-4-1-1-3-1-00-1-00-00	100	PN16	CTO	C	151,731
6133-0100-4-1-2-3-1-00-1-00-00	100	PN16	CTC	C	143,473
6133-0150-4-1-1-3-1-01-1-00-00	150	PN16	CTO	C	195,901
6133-0150-4-1-2-3-1-01-1-00-00	150	PN16	CTC	C	188,257
6133-0200-4-1-1-3-1-01-1-00-00	200	PN16	CTO	C	243,319
6133-0200-4-1-2-3-1-01-1-00-00	200	PN16	CTC	C	235,959
6133-0250-4-1-1-3-1-04-1-00-00	250	PN16	CTO	C	276,187
6133-0250-4-1-2-3-1-04-1-00-00	250	PN16	CTC	C	276,187
6133-0300-4-1-1-3-1-11-1-00-00	300	PN16	CTO	C	345,488
6133-0300-4-1-2-3-1-11-1-00-00	300	PN16	CTC	C	345,488
6133-0350-4-1-1-3-1-11-1-00-00	350	PN16	CTO	C	460,787
6133-0350-4-1-2-3-1-11-1-00-00	350	PN16	CTC	C	460,787
6133-0400-4-1-1-3-1-11-1-00-00	400	PN16	CTO	C	653,468
6133-0400-4-1-2-3-1-11-1-00-00	400	PN16	CTC	C	654,677
6133-0450-4-1-1-3-1-11-1-00-00	450	PN16	CTO	C	708,048
6133-0450-4-1-2-3-1-11-1-00-00	450	PN16	CTC	C	708,048
6133-0500-4-1-1-3-1-16-1-00-00	500	PN16	CTO	C	867,974
6133-0500-4-1-2-3-1-16-1-00-00	500	PN16	CTC	C	866,437
6133-0600-4-1-1-3-1-16-1-00-00	600	PN16	CTO	C	1,233,780
6133-0600-4-1-2-3-1-16-1-00-00	600	PN16	CTC	C	1,233,780
6133-0700-4-1-1-3-1-16-1-00-00	700	PN16	CTO	C	1,713,603
6133-0700-4-1-2-3-1-16-1-00-00	700	PN16	CTC	C	1,696,249

**6133/7-001**

Premier Metal Seated Wedge Gate Valve, designed to SANS664, PN25, bare shaft. Non-rising spindle, flat face Ductile iron

Clockwise to Close or Clockwise to Open

Also available in raised face Locally manufactured



AVK ref. no.	DN	PN	Operating	Deliv.	Gross price
	mm	Class	Direction	code	ZAR
6133-0050-7-1-1-4-1-00-1-00-00	50	PN25	CTO	C	79,179
6133-0050-7-1-2-4-1-00-1-00-00	50	PN25	CTC	C	80,025
6133-0100-7-1-1-4-1-01-1-00-00	100	PN25	CTO	C	153,962
6133-0100-7-1-2-4-1-01-1-00-00	100	PN25	CTC	C	146,404
6133-0150-7-1-1-4-1-01-1-00-00	150	PN25	CTO	C	189,770
6133-0150-7-1-2-4-1-01-1-00-00	150	PN25	CTC	C	190,069
6133-0200-7-1-1-4-1-01-1-00-00	200	PN25	CTO	C	240,969
6133-0200-7-1-1-4-1-04-1-00-00	200	PN25	CTO	C	215,968
6133-0200-7-1-2-4-1-01-1-00-00	200	PN25	CTC	C	233,610
6133-0200-7-1-2-4-1-04-1-00-00	200	PN25	CTC	C	216,088
6133-0250-7-1-1-4-1-04-1-00-00	250	PN25	CTO	C	252,082
6133-0250-7-1-2-4-1-04-1-00-00	250	PN25	CTC	C	252,082
6133-0300-7-1-1-4-1-11-1-00-00	300	PN25	CTO	C	340,475
6133-0300-7-1-2-4-1-11-1-00-00	300	PN25	CTC	C	340,475
6133-0350-7-1-1-4-1-11-1-00-00	350	PN25	CTO	C	457,063
6133-0350-7-1-2-4-1-11-1-00-00	350	PN25	CTC	C	457,063
6133-0400-7-1-1-4-1-11-1-00-00	400	PN25	CTO	C	767,671
6133-0400-7-1-2-4-1-11-1-00-00	400	PN25	CTC	C	767,671
6133-0450-7-1-1-4-1-16-1-00-00	450	PN25	CTO	C	801,779
6133-0450-7-1-2-4-1-16-1-00-00	450	PN25	CTC	C	803,202
6133-0500-7-1-1-4-1-16-1-00-00	500	PN25	CTO	C	888,268
6133-0500-7-1-2-4-1-16-1-00-00	500	PN25	CTC	C	886,731
6133-0500-7-1-6-4-1-16-1-00-00	500	PN25	CTC	C	886,775
6133-0600-7-1-1-4-1-16-1-00-00	600	PN25	CTO	C	1,238,259
6133-0600-7-1-2-4-1-16-1-00-00	600	PN25	CTC	C	1,238,259
6133-0700-7-1-1-4-1-16-1-00-00	700	PN25	CTO	C	1,714,648
6133-0700-7-1-1-4-1-18-1-00-00	700	PN25	CTO	C	1,701,083
6133-0700-7-1-2-4-1-25-1-00-00	700	PN25	CTC	C	1,752,568

**6133/B-001**

Premier Metal Seated Wedge Gate Valve, designed to SANS664, PN40, bare shaft. Non-rising spindle, flat face Cast Steel

Clockwise to Close or Clockwise to Open

Also available in raised face Locally manufactured



AVK ref. no.	DN	PN	Operating	Deliv.	Gross price
	mm	Class	Direction	code	ZAR
6133-0050-B-5-1-5-1-01-1-00-00	50	PN40	CTO	C	100,275
6133-0050-B-5-2-5-1-01-1-00-00	50	PN40	CTC	C	96,875
6133-0080-B-5-1-5-1-01-1-00-00	80	PN40	CTO	C	141,251
6133-0080-B-5-2-5-1-01-1-00-00	80	PN40	CTC	C	141,251
6133-0100-B-5-1-5-1-01-1-00-00	100	PN40	CTO	C	177,430
6133-0100-B-5-2-5-1-01-1-00-00	100	PN40	CTC	C	178,233
6133-0150-B-5-1-5-1-01-1-00-00	150	PN40	CTO	C	228,407
6133-0150-B-5-2-5-1-01-1-00-00	150	PN40	CTC	C	220,894
6133-0200-B-5-2-5-1-11-1-00-00	200	PN40	CTC	C	297,313
6133-0200-B-5-2-5-1-12-1-00-00	200	PN40	CTC	C	364,165
6133-0200-B-5-6-5-1-11-1-00-00	200	PN40	CTC	C	297,362
6133-0250-B-5-1-5-1-11-1-00-00	250	PN40	CTO	C	348,616
6133-0300-B-5-2-5-1-11-1-00-00	300	PN40	CTC	C	531,980
6133-0400-B-5-2-5-1-16-1-00-00	400	PN40	CTC	C	954,079
6133-0700-B-5-2-5-1-28-1-00-00	700	PN40	CTC	C	1,328,105

**6133/C-001**

Premier Metal Seated Wedge Gate Valve, designed to SANS664, PN64 Cast Steel

Clockwise to Open

Also available in raised face Locally manufactured



AVK ref. no.	DN	PN	Operating	Deliv.	Gross price
	mm	Class	Direction	code	ZAR
6133-0080-C-5-1-B-1-01-1-00-00	80	PN64	CTO	C	140,163
6133-0150-C-5-5-B-1-04-1-00-00	150	PN64	CTO	C	204,669
6133-0150-C-5-6-B-1-04-1-00-00	150	PN64	CTC	C	211,865
6133-0350-C-5-6-B-1-18-1-00-00	350	PN64	CTC	C	814,374

## 820/00-025

AVK centric butterfly valve, wafer type with stainless steel disc, loose EPDM liner drinking water and bare shaft for drinking water and neutral liquids up to max. 90°C

Face-to-face dimension according to EN 558, Series 20

Ductile iron body/1.4408 disc EPDM drinking water approved

Blue epoxy RAL 5017 200 µm up to DN400. Above PUR coating 250 µm

Clockwise to Close

Options: Available in other sizes and materials



AVK ref. no.	DN mm	Delta P bar	PN Class	Theoretical weight/kg	Deliv. code	Gross price ZAR
820-0050-00-541L0160002	50	16	PN 10/16	1.8	A	3,559
820-0065-00-541L0160002	65	16	PN 10/16	2.3	A	4,689
820-0080-00-541L0160002	80	16	PN 10/16	2.3	A	2,760
820-0100-00-541L0160002	100	16	PN 10/16	3.9	A	3,581
820-0150-00-541L0160002	150	16	PN 10/16	5.9	A	6,727
820-0200-00-541L0160002	200	16	PN 10/16	9.3	A	10,899
820-0250-00-541L0160002 <sup>(1)</sup>	250	16	PN 10/16	17	A	18,899
820-0300-00-541L0160002 <sup>(1)</sup>	300	16	PN 10/16	24	A	26,102
820-0350-00-04020160002 <sup>(1)</sup>	350	16	PN 10/16	42	A	31,046
820-0400-00-04020160002 <sup>(1)</sup>	400	16	PN 10/16	57	A	45,281
820-0450-00-04060161002 <sup>(1)</sup>	450	16	PN16	95	C	103,511
820-0500-00-04060161002 <sup>(1)</sup>	500	16	PN16	125	C	122,466
820-0600-00-04060161002 <sup>(1)</sup>	600	16	PN16	180	C	198,654
820-0700-00-04060161002 <sup>(1)</sup>	700	16	PN16	280	C	236,715
820-0800-00-04060161002 <sup>(1)</sup>	800	16	PN16	387	C	494,467
820-0900-00-04060161002 <sup>(1)</sup>	900	16	PN16	502	C	416,224
820-1000-00-04060161002 <sup>(1)</sup>	1000	16	PN16	710	C	562,146

<sup>(1)</sup> 10 bar. working pressure also available

## Series 820 Hand Lever

Imported

(3rd Party Product)



AVK ref. no.	DN mm	Delivery code	Gross price ZAR
174XHLAK006	80	A	1,056
174XHLAK010	100	A	1,056
174XHLAK011	150	A	1,212
174XHLAK013	200	A	1,212



## 6144/02-001

IPV butterfly valve, wafer type, EPDM liner, CF8M disc. DN50-150 lever operated, and DN200-600 gearbox operated  
ASTM A216 WCB  
EPDM rubber



DN50: Lever Operated  
DN200: Gearbox Operated  
Available in other materials  
Locally manufactured

AVK ref. no.	DN mm	PN Class	Flange drilling	Theoretical weight/kg	Deliv. code	Gross price ZAR
6144-0050-02-0802B00190	50	PN25	PN25	9	C	23,742
6144-0080-02-0802B00190	80	PN25	PN25	12	C	27,060
6144-0100-02-0802B00190	100	PN25	PN25	14	C	35,582
6144-0150-02-0802B00190	150	PN25	PN25	20	C	43,509
6144-0200-02-0802B00020	200	PN25	PN25	34	C	90,529
6144-0250-02-0802B00020	250	PN25	PN25	41	C	105,560
6144-0300-02-0802B00020	300	PN25	PN25	58	C	122,842
6144-0350-02-0802B00020	350	PN25	PN25	88	C	163,534
6144-0400-02-0802B00020	400	PN25	PN25	107	C	226,114
6144-0450-02-0802B00020	450	PN25	PN25	132	C	251,693
6144-0500-02-0802B00020	500	PN25	PN25	176	C	357,854
6144-0600-02-0802B00020	600	PN25	PN25	282	C	475,239

## 75/62-101

EN1092 flanged butterfly valve, DI body, fixed EPDM liner, duplex disc 1.4470 and shaft 1.4462, Dif. P 16bar, orange coating, bare shaft (WW ref. EVFS-i)



Face-to-face dimension according to EN 558, Series 13

Ductile iron  
EPDM rubber  
T014-C254

Clockwise to Close

Options: Available in other materials and larger valve size on request

AVK ref. no.	DN mm	PN Class	Theoretical weight/kg	Deliv. code	Gross price ZAR
75-0050-62-0000012	50	PN16	8.0	A	14,058
75-0065-62-0000012	65	PN16	9.0	C	16,322
75-0080-62-0000010	80	PN16	11	A	16,858
75-0100-62-0000011	100	PN16	13	A	20,373
75-0125-62-0000011	125	PN16	17	C	21,207
75-0150-62-0000012	150	PN16	16	A	31,929
75-0200-62-0000047	200	PN16	24	A	44,677
75-0250-62-0000004	250	PN10	39	A	75,891
75-0250-62-0000017	250	PN16	40	A	75,891
75-0300-62-0000004	300	PN16	65	A	93,762
75-0300-62-0000007	300	PN10	54	A	93,792
75-0350-62-0000004	350	PN10	95	A	126,346
75-0350-62-0000016	350	PN16	95	A	126,346
75-0400-62-0000003	400	PN10	130	A	213,139
75-0400-62-0000014	400	PN16	140	A	213,139
75-0450-62-0000004	450	PN10	150	A	271,934
75-0450-62-0000016	450	PN16	131	A	271,934
75-0500-62-0000004	500	PN10	146	A	308,688
75-0500-62-0000016	500	PN16	226	A	323,044
75-0600-62-0000005	600	PN10	214	C	468,393
75-0600-62-0000017	600	PN16	312	A	496,033

## 75/64-101

Centric butterfly valve, wafer type w/centering lugs, DI body, fixed EPDM liner, duplex disc 1.4470 and shaft 1.4462, Dif. P 16bar, orange coating, bare shaft (WW ref. EVCS-i)



Face-to-face dimension according to EN 558, Series 20

Ductile iron  
EPDM rubber  
T014-C254

Options: Available in other materials and larger valve size on request

AVK ref. no.	DN mm	PN Class	Theoretical weight/kg	Deliv. code	Gross price ZAR
75-0050-64-0000001	50	PN16	2.7	A	9,948
75-0065-64-0000012	65	PN16	3.3	A	10,663
75-0080-64-0000001	80	PN16	3.8	A	11,199
75-0100-64-0000002	100	PN16	5.0	A	13,760
75-0125-64-0000012	125	PN16	7.0	A	16,679
75-0150-64-0000014	150	PN16	8.7	A	23,470
75-0200-64-0000003	200	PN16	13	A	34,014
75-0250-64-0000005	250	PN16	21	A	58,795
75-0250-64-0000008	250	PN10	21	A	58,795
75-0300-64-0000004	300	PN16	32	A	72,555
75-0300-64-0000013	300	PN10	32	A	72,555
75-0350-64-0000003	350	PN16	40	A	88,877
75-0350-64-0000006	350	PN10	40	A	88,877



## 75/61-101

Centric butterfly valve, wafertype, EN1092 flanged, short EN558/20, fixed EPDM lining, DI body, duplex disc/shaft, dif. P16 bar, coating orange, bare shaft (WW ref. EVS-i)

Face-to-face dimension according to EN 558, Series 20

Ductile iron  
EPDM rubber  
T014-C254



AVK ref. no.	DN mm	Delta P bar	Theoretical weight/kg	Deliv. code	Gross price ZAR
75-0400-61-0000006	400	16	75	A	216,832
75-0450-61-0000002	450	10	90	C	216,832
75-0450-61-0000003	450	16	90	A	216,832
75-0500-61-0000003	500	16	120	A	288,375
75-0500-61-0000005	500	10	136	C	274,018
75-0600-61-0000003	600	10	180	C	370,699
75-0600-61-0000004	600	16	172	A	398,339

Options: Available in other materials and larger valve size on request

## Wouter Witzel Hand Lever (For EV Range)

Cast iron hand lever.  
Mild steel nodge plate with pin  
and Stainless steel pin  
options  
Galvanized lever with  
SS pin and nodge plate



AVK ref. no.	DN mm	Delivery code	Gross price ZAR
YL1R504Y	50-80	A	1,463
YL2R505Y	100-125	A	1,463
YL3R502Y	150-200	A	1,764







# AVK BUTTERFLY VALVE SUITABLE FOR DRINKING WATER

Our double eccentric butterfly valves are designed with a tilted disc for easy operation. The disc seal is made of our own drinking water approved EPDM rubber featuring an excellent compression set and the ability to retain its original shape.

The fully encapsulated shaft/disc connection ensures high durability and service life. The valves are suitable for the bi-directional application.

The valves are ideal for drinking water and neutral liquids to max. 70°C, and are approved according to WRAS Certificate No. 1702367

#### Applications:

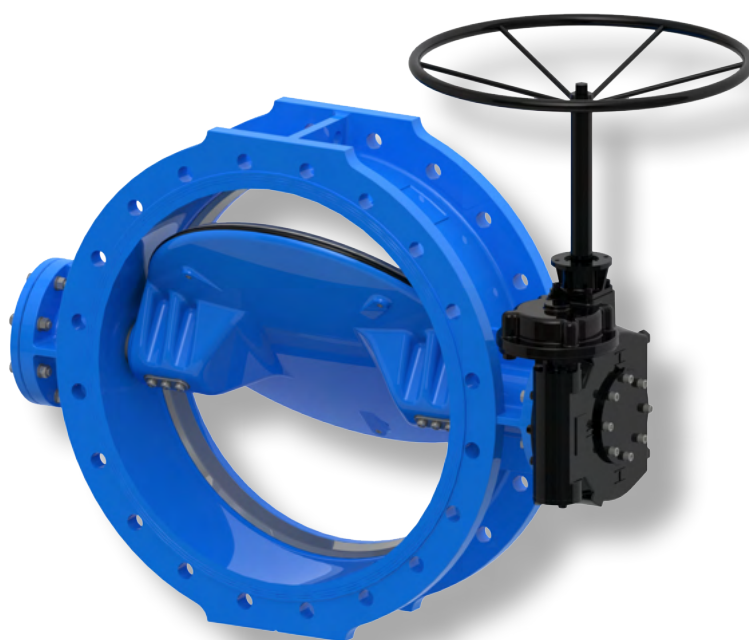
- Water transfer pipelines
- Pumping stations
- Treatment plants

#### Standards:

- EN 593
- Face-to-face dimension according to EN 558 Table 2 Basic Series 13
- Flange drilling to EN 1092

#### Main features and benefits:

- The tilted disc releases the compression of the seal after a few degrees of opening resulting in low operating torque
- Disc seal profile and rubber quality ensure low closing torque
- Sealing rubber & coating approved for drinking water
- A4 Stainless Steel fasteners
- Replaceable seat ring in 316 Stainless Steel
- Threaded bolt holes in the disc sealed with o-rings for corrosion protection
- A shaft of Duplex Stainless Steel with self-lubricating PTFE/bronze composite radial bearings
- Shaft ends are fitted with a Duplex Stainless Steel End Cover that seals the disc interior for corrosion protection and ensures the shaft cannot be moved by system pressure
- Replaceable shaft seal with two EPDM o-rings on each side of a bronze bushing, and a flat NBR gasket
- IP68 Gearbox with Position Indicator





## 756/218-005

Double ecc. butterfly valve, IP67 gearbox w. handwheel/pos. ind., SS-shaft, intgr. seat, A2 fasteners, PN10/16, small Face-to-face dimension according to EN 558, Series 13

Ductile iron

EPDM rubber, WRAS approved

Fusion bonded epoxy to DIN 3476-1 and EN 14901

Clockwise to Close



AVK ref. no.	DN mm	Flange drilling	Theoretical weight/kg	Deliv. code	Gross price ZAR
756-0200-2-04018014	200	PN10	47	C	24,513
756-0250-2-04018014	250	PN10	61	C	29,940
756-0300-2-04018014	300	PN10	86	C	36,787
756-0350-2-04018014	350	PN10	107	C	42,557

## 756/H18-001

Double ecc. butterfly valve, IP67 gearbox w. handwheel/pos. ind., intgr. seat, EP coated seal ret. ring, SS shaft, A2 fasteners, PN10/16, bi-direct.

Ductile iron

EPDM rubber

Blue epoxy RAL 5017 250 µm

Clockwise to Close



AVK ref. no.	DN mm	Flange drilling	Theoretical weight/kg	Deliv. code	Gross price ZAR
756-0400-H-04018014	400	PN10	102	C	44,945
756-0400-H-14018014	400	PN16	113	A	46,134
756-0450-H-04018014	450	PN10	125	A	53,028
756-0450-H-14018014	450	PN16	152	A	60,496
756-0500-H-04018014	500	PN10	143	A	58,955
756-0500-H-14018014	500	PN16	193	A	72,011
756-0600-H-04018014	600	PN10	210	C	75,994
756-0600-H-14018014	600	PN16	293	C	105,030
756-0700-H-04018014	700	PN10	357	C	169,217
756-0700-H-14018014	700	PN16	399	C	193,779
756-0800-H-04018014	800	PN10	473	C	323,278
756-0800-H-14018014	800	PN16	522	C	225,473
756-0900-H-04018014	900	PN10	594	C	252,744
756-0900-H-14018014	900	PN16	672	C	292,564
756-1000-H-04018014	1000	PN10	806	C	523,649
756-1000-H-14018014	1000	PN16	905	C	359,529
756-1200-H-04018014	1200	PN10	1169	C	725,011
756-1200-H-14018014	1200	PN16	1403	C	551,280
756-1400-H-14018014	1400	PN16	2068	C	734,204

## 756/118-005

Double ecc. butterfly valve, IP67 gearbox w. handwheel/pos. ind., SS-shaft, intgr. seat, A2 fasteners, PN10/16, small Face-to-face dimension according to EN 558, Series 14

Ductile iron

EPDM rubber, WRAS approved

Fusion bonded epoxy to DIN 3476-1 and EN 14901

Clockwise to Close



AVK ref. no.	DN mm	Flange drilling	Theoretical weight/kg	Deliv. code	Gross price ZAR
756-0150-1-14018014	150	PN16	38	A	23,356
756-0200-1-14018014	200	PN16	51	A	25,668
756-0250-1-14018014	250	PN16	71	A	31,302
756-0300-1-14018014	300	PN16	106	A	41,344
756-0350-1-14018014	350	PN16	134	A	48,025

# BUTTERFLY VALVES ACTUATION

Valve with IP67 manual gear and handwheel								
AVK valve variant	DN	PN	Rotork gear selection	Valve ISO flange	Valve shaft Ø	Hand wheel Ø	Gear Ratio	AVK ref no.
756/218-005	150	10/16	AB550N	F10	22	250	34:1	755458018100401
756/218-005	200	10	AB550N	F10	25	250	34:1	755458012800401
756/218-005	200	16	AB550N	F10	25	250	34:1	755458012800401
756/218-005	250	10	AB550N	F10	25	250	34:1	755458012800401
756/218-005	250	16	AB550N	F10	25	250	34:1	755458012800401
756/218-005	300	10	AB550N	F12	35	250	34:1	755458012700402
756/218-005	300	16	AB550N	F12	35	400	38:1	755459032700702
756/218-005	350	10	AB550N	F12	35	250	34:1	755458012700402
756/218-005	350	16	AB880N	F12	35	400	38:1	755459032700702
756/218-005	400	10	AB880N	F12	35	400	38:1	755459032700702
756/218-005	400	16	AB880N	F14	45	500	38:1	755459032700702
756/218-005	450	10	AB880N	F14	45	400	38:1	755459032900703
756/218-005	450	16	AB1250N	F14	45	500	55:1	755460102900903
756/218-005	500	10	AB880N	F14	45	400	38:1	755459032900703
756/218-005	500	16	AB1250N	F14	45	500	55:1	755460102900903
756/218-005	600	10	AB1250N	F14	45	500	55:1	755460102900903
756/218-005	600	16	AB2000N	F16	50	600	109:1	755488783041004
756/218-001	700	10	AB2000N	F25	65	600	109:1	755488784501006
756/218-001	700	16	AB1950N/PR4	F25	65	700	217:1	755462804542406
756/218-001	800	10	AB2000N	F25	80	600	109:1	755488782201006
756/218-001	800	16	AB1950N/PR4	F25	80	700	217:1	755462802242406
756/218-001	900	10	AB1950N/PR4	F25	80	700	217:1	755462802242406
756/218-001	900	16	AB6800N/PR4	F25	80	700	326:1	755463872242406
756/218-001	1000	10	AB3000N/PR4	F25	100	700	243:1	755493862342406
756/218-001	1000	16	AB6800N/PR4	F25	100	600	326:1	755463872341006
756/218-001	1200	10	AB6800N/PR4	F30	100	600	326:1	755463872341006
756/218-001	1200	16	A200N/PR10	F30	130	700	729:1	755472894142409
Valve with IP67 ISO flange and electrical actuator								
AVK valve variant	DN	PN	Rotork gear selection	Valve side	Actuator side flange	Gear ratio	Gear AVK item number	Auma selection*
756/202-007	200	10	AB550M	F10 / Ø25	F10 / Ø20	34:1	7554C9012801501	SA07.6-B3 / 5,6 RPM
756/202-007	200	16	AB550M	F10 / Ø25	F10 / Ø20	34:1	7554C9012801501	SA07.6-B3 / 5,6 RPM
756/202-007	250	10	AB550M	F10 / Ø25	F10 / Ø20	34:1	7554C9012801501	SA07.6-B3 / 5,6 RPM
756/202-007	250	16	AB550M	F10 / Ø25	F10 / Ø20	34:1	7554C9012801501	SA07.6-B3 / 5,6 RPM
756/202-007	300	10	IW3-A2	F12 / Ø35	F10 / Ø20	48:1	755307912701502	SA07.6-B3 / 5,6 RPM
756/202-007	300	16	AB1250M/PR4	F12 / Ø35	F10 / Ø20	48:1	7554D1C32701502	SA07.2-B3 / 22 RPM
756/202-007	350	10	AB1250M/PR4	F12 / Ø35	F10 / Ø20	201:1	7554D1C32701502	SA07.2-B3 / 22 RPM
756/202-007	350	16	AB1250M/PR4	F12 / Ø35	F10 / Ø20	201:1	7554D1C32701502	SA07.2-B3 / 22 RPM
756/202-007	400	10	AB1250M/PR4	F12 / Ø35	F10 / Ø20	201:1	7554D1C32701502	SA07.2-B3 / 22 RPM
756/202-007	400	16	AB1250M/PR4	F12 / Ø35	F10 / Ø20	201:1	7554D1C32701502	SA07.2-B3 / 22 RPM
756/202-007	450	10	AB1250M/PR4	F14 / Ø45	F10 / Ø20	201:1	7554D1C32901503	SA07.2-B3 / 22 RPM
756/202-007	450	16	IW4R-A2	F14 / Ø45	F10 / Ø20	184:1	7553A8D22901503	SA07.2-B3 / 22 RPM
756/202-007	500	10	AB1250M/PR4	F14 / Ø45	F10 / Ø20	201:1	7554D1C32901503	SA07.2-B3 / 22 RPM
756/202-007	500	16	IW4R-A2	F14 / Ø45	F10 / Ø20	184:1	7553A8D22901503	SA07.6-B3 / 22 RPM
756/202-007	600	10	IW5R-A2	F14 / Ø45	F10 / Ø20	192:1	7553B1262901503	SA07.6-B3 / 22 RPM
756/202-007	600	16	IW5R-A2	F16 / Ø50	F10 / Ø20	243:1	7553B1863041504	SA07.6-B3 / 22 RPM
756/202-003	700	10	IW5R-A2	F25 / Ø65	F10 / Ø20	243:1	7553B1864541506	SA07.6-B3 / 22 RPM
756/202-003	700	16	IW6R-A2	F25 / Ø65	F10 / Ø20	456:1	7553B2A94501506	SA07.6-B3 / 45 RPM
756/202-003	800	10	IW6R-A2	F25 / Ø80	F10 / Ø20	304:1	7553B2B12201506	SA07.6-B3 / 22 RPM
756/202-003	800	16	IW6R-A2	F25 / Ø80	F10 / Ø20	456:1	7553B2A92201506	SA07.6-B3 / 45 RPM
756/202-003	900	10	IW6R-A2	F25 / Ø80	F10 / Ø20	456:1	7553B2A92201506	SA07.6-B3 / 45 RPM
756/202-003	900	16	IW66R-A2	F25 / Ø80	F10 / Ø20	304:1	755359B12241506	SA10.2-B3 / 22 RPM
756/202-003	1000	10	IW7R-A2	F25 / Ø100	F10 / Ø20	768:1	755360A62341506	SA07.6-B3 / 45 RPM
756/202-003	1000	16	IW7R-A2	F25 / Ø100	F10 / Ø20	768:1	755360A62341506	SA07.6-B3 / 45 RPM
756/202-003	1200	10	IW7R-A2	F30 / Ø100	F10 / Ø20	768:1	755360A62341507	SA07.6-B3 / 45 RPM
756/202-003	1200	16	IW76R-A2	F30 / Ø130	F10 / Ø20	572:1	755362B34141507	SA10.2-B3 / 45 RPM

\* for Auma selection please consult AVK SA for further information. Note that the sizing of the Auma is done according to the AVK standard selected gearboxes and gear ratios, selecting a smaller or larger actuator is not recommended as this will mean that gears have to be re-sized. The selected Auma actuators comply to S15 running time for full open/close cycles.

# BOVING BUTTERFLY VALVES

## Series 6137, PN10 & PN16

Boving Double Eccentric  
Butterfly Valve  
Soft seal in EPDM  
S.G. Iron body and disc  
Bare shaft  
Various gearbox and  
actuation options



Locally Manufactured

AVK ref. no.	DN- mm	Flange drilling	Theoretical weight/kg	F/F	Delivery Code	Gross price ZAR
61370200090190Z06024	200	10	83.4	152	C	POR
61370400610123U42000	400	10	227	216	C	POR
61370450610123U44000	450	10	265	222	C	POR
61370450620123U44000	450	10	265	222	C	POR
61370600040123146110	600	10	508	267	C	POR
61370800090127Z62024	800	10	775	318	C	POR
61372000480684AAA000 (auto-close)	2000	10	7500	760	C	POR
61373000760629ACC000	3000	10	17,986	700	C	POR

AVK ref. no.	DN- mm	Flange drilling	Theoretical weight/kg	F/F	Delivery Code	Gross price ZAR
61370500050223144024	350	16	270	229	C	POR
61370600530727246000	600	16	571	267	C	POR
61370700050223177024	700	16	809	292	C	POR

## Series 6137, PN25

Boving Double Eccentric  
Butterfly Valve  
Soft seal in EPDM  
S.G. Iron body and disc  
Bare shaft  
Various gearbox and  
actuation options



Locally Manufactured

AVK ref. no.	DN- mm	Flange drilling	Theoretical weight/kg	F/F	Delivery Code	Gross price ZAR
61370350110327146110	350	25	218		C	POR
61370600110327164110	600	25	677	390	C	POR
61370700630327U99000	700	25	333		C	POR

## Series 6137, PN40

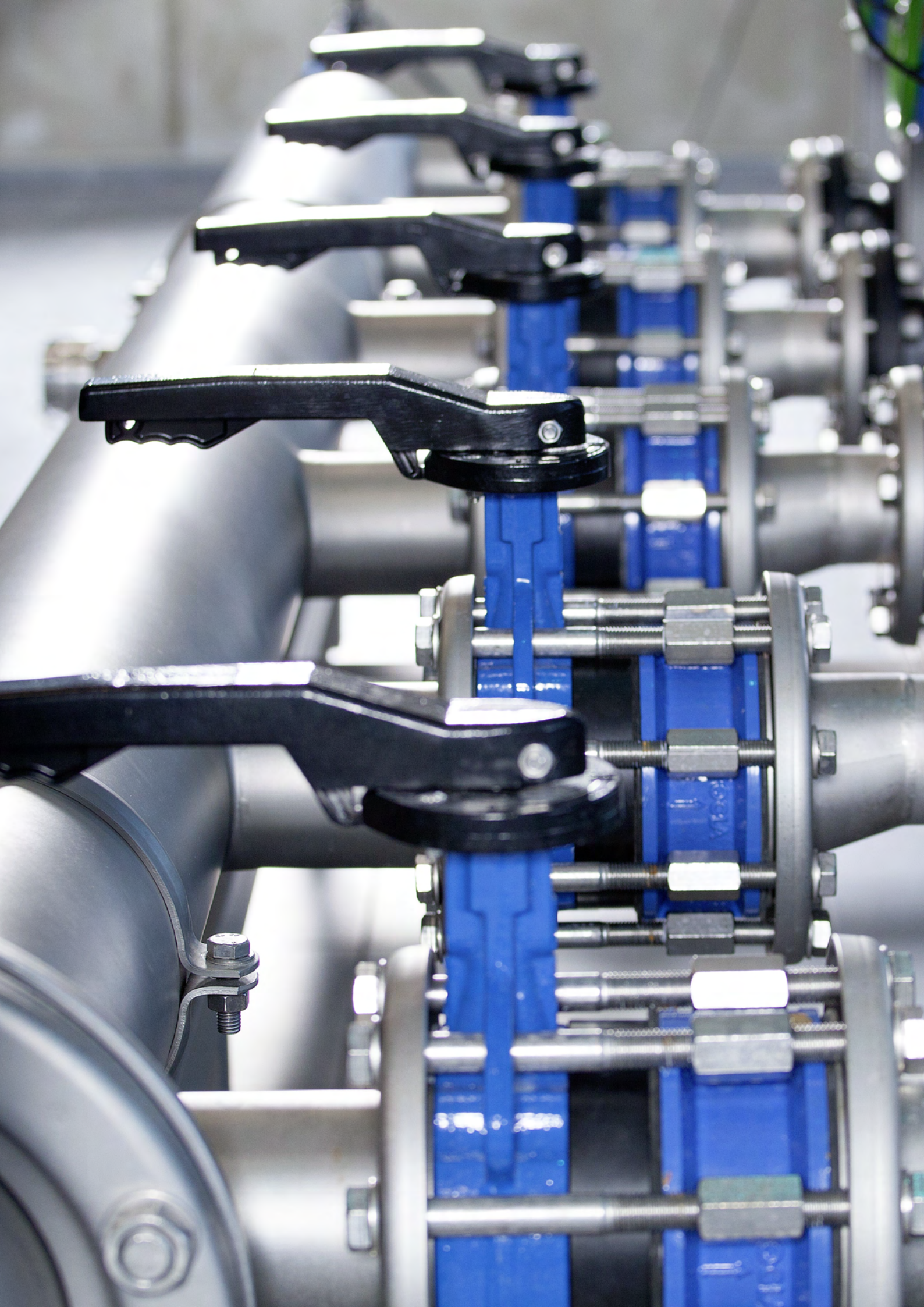
Boving Double Eccentric  
Butterfly Valve  
Soft seal in EPDM  
S.G. Iron body and disc  
Bare shaft  
Various gearbox and  
actuation options



Locally Manufactured

AVK ref. no.	DN- mm	Flange drilling	Theoretical weight/kg	F/F	Delivery Code	Gross price ZAR
61370150470923113000	150	40	62	210	C	POR
61370600070423195024	600	40	1075	390	C	POR







## 6145/08-001

Gunric Butterfly Valve, Triple Eccentric, laminated metal seated, ductile iron body, bare shaft

Locally manufactured



AVK ref. no.	DN mm	PN Class	Flange drilling	Deliv. code	Gross price
6145-0900-08-0635200000	900	PN10	PN10	C	POR
6145-1200-08-0635200000	1200	PN10	PN10		

## 6145/09-001

Gunric Butterfly Valve, Triple Eccentric, laminated metal seated, ductile iron body, bare shaft

Locally manufactured



AVK ref. no.	DN mm	PN Class	Flange drilling	Deliv. code	Gross price
6145-0800-09-0735200000	800	PN16	PN16	C	POR
6145-1000-09-07352AG000	1000	PN16	PN16	C	POR
6145-1200-09-07352AK000	1200	PN16	PN16	C	POR
6145-1400-09-07352AK000	1400	PN16	PN16		

## 6145/10-001

Gunric Butterfly Valve, Triple Eccentric, laminated metal seated, ASTM A216 WCB body, bare shaft

Locally manufactured



AVK ref. no.	DN mm	PN Class	Flange drilling	Deliv. code	Gross price
6145-0150-10-0835200000	150	PN25	PN25	C	POR
6145-0200-10-0835200000	200	PN25	PN25	C	POR
6145-0900-10-08352AG000	900	PN25	PN25	C	POR
6145-1000-10-08352AG000	1000	PN25	PN25		

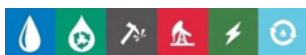
## 6145/11-001

Gunric Butterfly Valve, Triple Eccentric, laminated metal seated, ASTM A216 WCB body, bare shaft

Locally manufactured



AVK ref. no.	DN mm	PN Class	Flange drilling	Deliv. code	Gross price
6145-0250-11-0935200000	250	PN40	PN40	C	POR
6145-0400-11-0935200000	400	PN40	PN40	C	POR
6145-0500-11-0935200000	500	PN40	PN40	C	POR
6145-0700-11-0935200000	700	PN40	PN40	C	POR
6145-0800-11-09352AI000	800	PN40	PN40	C	POR
6145-1000-11-09352AL000	1000	PN40	PN40	C	POR
6145-1200-11-09352AL000	1200	PN40	PN40	C	POR



### 41/60-011

Swing check valve, free shaft ended. Design to EN 1074. PN16

Face-to-face dimension according to EN 558, Series 48

Ductile iron  
EPDM rubber



AVK ref. no.	DN mm	Flange drilling	Face to Face	Theoretical weight/kg	Deliv. code	Gross price ZAR
41-050-60-01833	50	PN16	EN558/48	13	A	17,029
41-080-60-01833	80	PN16	EN558/48	20	A	13,822
41-100-60-01833	100	PN16	EN558/48	21	A	15,787
41-150-60-01833	150	PN16	EN558/48	51	A	27,097
41-200-60-00833	200	PN10	EN558/48	83	A	36,831
41-200-60-01833	200	PN16	EN558/48	83	A	36,831
41-250-60-01833	250	PN16	EN558/48	183	A	95,050
41-300-60-01833	300	PN16	EN558/48	231	A	114,450

### 41/D-001

Lever and weight kit, swing check valve

Ductile iron

Fusion bonded epoxy to DIN 3476-1 and EN 14901



AVK ref. no.	DN/DN	Theoretical weight/kg	Deliv. code	Gross price ZAR
41-080-23-000	50 - 80	2.8	A	1,700
41-100-23-000	100 - 100	2.9	A	2,005
41-150-23-000	125 - 150	5.6	A	2,555
41-200-23-000	200 - 200	5.7	A	2,945
41-300-23-000	250 - 300	13	A	6,142

### 41/61-011

Swing check valve, closed ends. Design to EN 1074. PN16

Face-to-face dimension according to EN 558, Series 48

Ductile iron  
EPDM rubber

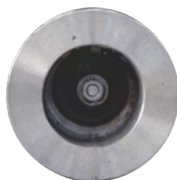


AVK ref. no.	DN mm	Flange drilling	Face to Face	Theoretical weight/kg	Deliv. code	Gross price ZAR
41-050-61-01833	50	PN16	EN558/48	12	A	12,265
41-080-61-01833	80	PN16	EN558/48	17	A	11,149
41-100-61-01833	100	PN16	EN558/48	21	A	12,968
41-150-61-01833	150	PN16	EN558/48	42	A	21,881
41-200-61-01833	200	PN16	EN558/48	67	A	39,701
41-250-61-01833	250	PN16	EN558/48	183	A	94,056
41-300-61-01833	300	PN16	EN558/48	197	A	113,949

### 6143/02-002

IPV Wafer check valve, C533, single door, CF8M body, class 150, fits ASA150 flanges

Locally manufactured

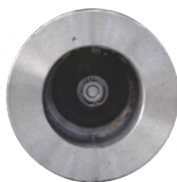


AVK ref. no.	DN mm	PN Class	Flange drilling	Deliv. code	Gross price ZAR
6143-0050-02-1803000000	50	ANSI CL150	ANSI 150	C	19,795
6143-0080-02-1803000000	80	ANSI CL150	ANSI 150	C	23,632
6143-0100-02-1803000000	100	ANSI CL150	ANSI 150	C	36,380
6143-0150-02-1803000000	150	ANSI CL150	ANSI 150	C	53,349
6143-0200-02-1803000000	200	ANSI CL150	ANSI 150	C	70,660
6143-0250-02-1803000000	250	ANSI CL150	ANSI 150	C	123,362
6143-0300-02-1803000000	300	ANSI CL150	ANSI 150	C	172,601
6143-0350-02-1803000000	350	ANSI CL150	ANSI 150	C	214,662

### 6143/03-002

IPV Wafer check valve, C533, single door, CF8M body, class 300, fits ASA300 flanges

Locally manufactured



AVK ref. no.	DN mm	PN Class	Flange drilling	Deliv. code	Gross price ZAR
6143-0050-03-1903000000	50	ANSI CL300	ANSI 300	C	21,674
6143-0080-03-1903000000	80	ANSI CL300	ANSI 300	C	25,723
6143-0100-03-1903000000	100	ANSI CL300	ANSI 300	C	40,211
6143-0150-03-1903000000	150	ANSI CL300	ANSI 300	C	59,443
6143-0200-03-1903000000	200	ANSI CL300	ANSI 300	C	77,919
6143-0250-03-1903000000	250	ANSI CL300	ANSI 300	C	139,105
6143-0300-03-1903000000	300	ANSI CL300	ANSI 300	C	195,461
6143-0350-03-1903000000	350	ANSI CL300	ANSI 300	C	250,911

### 6143/02-001

IPV Wafer check valve, C523, single door, WCB body and CF8M disc, class 150, fits ASA150 flanges

Locally manufactured



AVK ref. no.	DN mm	PN Class	Flange drilling	Deliv. code	Gross price ZAR
6143-0050-02-1801B00000	50	ANSI CL150	ANSI 150	C	17,238
6143-0080-02-1801B00000	80	ANSI CL150	ANSI 150	C	18,934
6143-0100-02-1801B00000	100	ANSI CL150	ANSI 150	C	23,757
6143-0150-02-1801B00000	150	ANSI CL150	ANSI 150	C	35,061
6143-0200-02-1801B00000	200	ANSI CL150	ANSI 150	C	51,956
6143-0250-02-1801B00000	250	ANSI CL150	ANSI 150	C	71,516
6143-0300-02-1801B00000	300	ANSI CL150	ANSI 150	C	95,143
6143-0350-02-1801B00000	350	ANSI CL150	ANSI 150	C	119,406

## 6143/03-001

IPV Wafer check valve, C623, single door, WCB body and CF8M disc, class 300, fits ASA300 flanges

Locally manufactured



AVK ref. no.	DN mm	PN Class	Flange drilling	Deliv. code	Gross price ZAR
6143-0050-03-1901B00000	50	ANSI CL300	ANSI 300	C	18,012
6143-0080-03-1901B00000	80	ANSI CL300	ANSI 300	C	19,813
6143-0100-03-1901B00000	100	ANSI CL300	ANSI 300	C	24,831
6143-0150-03-1901B00000	150	ANSI CL300	ANSI 300	C	36,889

## 642/60-003

Split door swing check valve, wafer type, fixed liner, SS-440x/316 disc, shaft and spring, PN10/16 connections, 16 bar, 100 µm orange RAL 2000 PUR (WW ref ECV)

Face-to-face dimension according to EN 558, Series 16

Ductile iron  
EPDM rubber



AVK ref. no.	DN mm	Theoretical weight/kg	Deliv. code	Gross price ZAR
642-0050-60-2068056000	50	1.3	A	10,417
642-0080-60-2068056000	80	3.5	A	10,591
642-0100-60-2068056000	100	4.5	A	8,447
642-0150-60-2068056000	150	8.5	A	12,379
642-0200-60-2068026000	200	13	A	17,221
642-0250-60-2068026000	250	24	A	26,542
642-0400-60-2068026000	400	60	A	103,420
642-0500-60-2068013000	500	105	A	190,710

Options: Available in other materials and larger valve size on request



## 53/35-004

Ball check valve, flanged,  
PN10  
Face-to-face dimension  
according to EN 558, Series  
48  
Ductile iron  
NBR rubber



AVK ref. no.	DN mm	PN Class	Face to Face	Theoretical weight/kg	Deliv. code	Gross price ZAR
53-050-35-1033	50	PN10	EN558/48	7,3	A	7,729
53-080-35-1033	80	PN10	EN558/48	12	A	6,354
53-100-35-1033	100	PN10	EN558/48	16	A	10,960
53-150-35-1033	150	PN10	EN558/48	32	A	15,683
53-200-35-1033	200	PN10	EN558/48	68	A	30,632
53-250-35-1033	250	PN10	EN558/48	93	A	58,346
53-300-35-1033	300	PN10	EN558/48	124	A	83,907

## 53/35-005

Ball check valve, flanged, tbl.  
D, A2 bolts/zinc-coated A4  
nuts  
Face-to-face dimension  
according to EN 558, Series  
48  
Ductile iron  
NBR rubber



AVK ref. no.	DN mm	PN Class	Face to Face	Theoretical weight/kg	Deliv. code	Gross price ZAR
53-100-35-5033	100	PN10	EN558/48	16	A	10,161
53-150-35-5033	150	PN10	EN558/48	32	A	17,641



## 6146/05-001

Gunric Tilting Disc Check Valve, SABS 1431 Gr300 wa body and disc material, PN10

Locally manufactured



AVK ref. no.	DN mm	PN Class	Flange drilling	Theoretical weight/kg	Deliv. code	Gross price
6146-0200-05-06351	200	PN10	PN10	67	C	POR
6146-0250-05-06351	250	PN10	PN10	85	C	POR
6146-0300-05-06351	300	PN10	PN10	138	C	POR
6146-0350-05-06351	350	PN10	PN10	165	C	POR
6146-0400-05-06351	400	PN10	PN10	185	C	POR
6146-0500-05-06351	500	PN10	PN10	250	C	POR
6146-0600-05-06351	600	PN10	PN10	535	C	POR
6146-0800-05-06351	800	PN10	PN10	785	C	POR
6146-1000-05-06351	1000	PN10	PN10	1820	C	POR
6146-1200-05-06351	1200	PN10	PN10	1993	C	POR

## 6146/08-001

Gunric Tilting Disc Check Valve, SABS 1431 Gr300 wa body and disc material, PN16

Locally manufactured



AVK ref. no.	DN mm	PN Class	Flange drilling	Theoretical weight/kg	Deliv. code	Gross price
6146-0200-08-07351	200	PN16	PN16	67	C	POR
6146-0250-08-07351	250	PN16	PN16	85	C	POR
6146-0300-08-07351	300	PN16	PN16	145	C	POR
6146-0350-08-07351	350	PN16	PN16	180	C	POR
6146-0400-08-07351	400	PN16	PN16	265	C	POR
6146-0600-08-07351	600	PN16	PN16	645	C	POR

## 6146/09-001

Gunric Tilting Disc Check Valve, SABS 1431 Gr300 wa body and disc material, PN25

Locally manufactured



AVK ref. no.	DN mm	PN Class	Flange drilling	Theoretical weight/kg	Deliv. code	Gross price
6146-0800-09-08351	800	PN25	PN25	970	C	POR

## 6146/10-001

Gunric Tilting Disc Check Valve, SABS 1431 Gr300 wa body and disc material, PN40

Locally manufactured



AVK ref. no.	DN mm	PN Class	Flange drilling	Theoretical weight/kg	Deliv. code	Gross price
6146-0800-10-09351	800	PN40	PN40	1250	C	POR

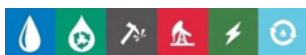
## 1410/35-001

Tilting Disc Check Valve, model RM  
Face-to-face dimension according to EN 558, Series 16  
Stainless steel

Options: Available with Counter lever and weight or spring. Larger sizes on request



AVK ref. no.	DN mm	PN Class	Deliv. code	Gross price ZAR
1410-0050-35-0000002	50	PN40	A	14,033
1410-0080-35-0000004	80	PN40	A	16,779
1410-0100-35-0000005	100	PN40	A	20,338
1410-0125-35-0000006	125	PN40	A	25,524
1410-0150-35-0000007	150	PN40	A	29,388
1410-0200-35-0000008	200	PN40	A	40,981
1410-0250-35-0000009	250	PN40	A	57,912
1410-0300-35-0000010	300	PN40	A	73,826
1410-0350-35-0000011	350	PN25	A	106,112
1410-0400-35-0000012	400	PN25	A	133,009
1410-0450-35-0000013	450	PN25	A	193,565



## 6142/01-001

Ball valve, IPV R523, reduced bore, 1 piece design, body WCB, ball 316 SS, RTFE seats, design to ANSI B16.10. Manually operated

Locally manufactured



AVK ref. no.	DN mm	Description	Flange drilling	Deliv. code	Gross price ZAR
6142-0040-01-1803B00088	40	LEVER OPERATED	ANSI 150	C	27,403
6142-0050-01-1803B00088	50	LEVER OPERATED	ANSI 150	C	34,884
6142-0080-01-1803B00088	80	LEVER OPERATED	ANSI 150	C	47,483
6142-0100-01-1803B00088	100	LEVER OPERATED	ANSI 150	C	65,276
6142-0150-01-1803B00088	150	LEVER OPERATED	ANSI 150	C	115,720
6142-0200-01-1803B00020	200	GEARBOX HANDWHEEL	ANSI 150	C	195,802
6142-0200-01-1803B00088	200	LEVER OPERATED	ANSI 150	C	157,141
6142-0250-01-1803B00020	250	GEARBOX HANDWHEEL	ANSI 150	C	236,424
6142-0300-01-1803B00020	300	GEARBOX HANDWHEEL	ANSI 150	C	439,530

## 6142/01-002

Ball valve, IPV R533, reduced bore, 1 piece design, body CF8M, ball 316 SS, RTFE seats, design to ANSI B16.10. Manually operated

Locally manufactured



AVK ref. no.	DN mm	Description	Flange drilling	Deliv. code	Gross price ZAR
6142-0040-01-1809000088	40	LEVER OPERATED	ANSI 150	C	41,342
6142-0050-01-1809000088	50	LEVER OPERATED	ANSI 150	C	50,644
6142-0080-01-1809000088	80	LEVER OPERATED	ANSI 150	C	77,067
6142-0100-01-1809000088	100	LEVER OPERATED	ANSI 150	C	105,457
6142-0150-01-1809000088	150	LEVER OPERATED	ANSI 150	C	166,759
6142-0200-01-1809000020	200	GEARBOX HANDWHEEL	ANSI 150	C	293,645
6142-0200-01-1809000088	200	LEVER OPERATED	ANSI 150	C	252,198
6142-0250-01-1809000020	250	GEARBOX HANDWHEEL	ANSI 150	C	345,173
6142-0300-01-1809000020	300	GEARBOX HANDWHEEL	ANSI 150	C	696,465

## 6142/01-003

Ball valve, IPV R534, reduced bore, 1 piece design, body CF8M, ball/stem/gland bush alloy 20, RTFE seats, design to ANSI B16.10. Manually operated

Locally manufactured



AVK ref. no.	DN mm	Description	Flange drilling	Deliv. code	Gross price ZAR
6142-0040-01-1812000088	40	LEVER OPERATED	ANSI 150	C	59,650
6142-0050-01-1812000088	50	LEVER OPERATED	ANSI 150	C	68,760
6142-0080-01-1812000088	80	LEVER OPERATED	ANSI 150	C	104,788
6142-0100-01-1812000020	100	GEARBOX HANDWHEEL	ANSI 150	C	180,162
6142-0100-01-1812000088	100	LEVER OPERATED	ANSI 150	C	148,585
6142-0150-01-1812000020	150	GEARBOX HANDWHEEL	ANSI 150	C	249,362
6142-0150-01-1812000088	150	LEVER OPERATED	ANSI 150	C	216,457

## 6142/01-004

Ball valve, IPV R544, reduced bore, 1 piece design, alloy-20 body and trim, PTFE seats and packing, design to ANSI B16.10. Manually operated

Locally manufactured



AVK ref. no.	DN mm	Description	Flange drilling	Deliv. code	Gross price ZAR
6142-0040-01-1813000088	40	LEVER OPERATED	ANSI 150	C	72,707
6142-0050-01-1813000088	50	LEVER OPERATED	ANSI 150	C	87,495
6142-0080-01-1813000088	80	LEVER OPERATED	ANSI 150	C	125,269
6142-0100-01-1813000020	100	GEARBOX HANDWHEEL	ANSI 150	C	222,351
6142-0100-01-1813000088	100	LEVER OPERATED	ANSI 150	C	190,774
6142-0150-01-1813000020	150	GEARBOX HANDWHEEL	ANSI 150	C	318,010
6142-0150-01-1813000088	150	LEVER OPERATED	ANSI 150	C	285,105

## 6142/02-001

Ball valve, IPV F523, full bore, 1 piece design, body WCB, ball 316 SS, RTFE seats, design to ANSI B16.10. Manually operated

Locally manufactured



AVK ref. no.	DN mm	Description	Flange drilling	Deliv. code	Gross price ZAR
6142-0015-02-1803B00080	15	LEVER OPERATED	ANSI 150	C	20,672
6142-0020-02-1803B00080	20	LEVER OPERATED	ANSI 150	C	22,058

## 6142/02-002

Ball valve, IPV F533, full bore, 1 piece design, body CF8M, ball 316 SS, RTFE seats, design to ANSI B16.10. Manually operated

Locally manufactured



AVK ref. no.	DN mm	Description	Flange drilling	Deliv. code	Gross price ZAR
6142-0015-02-1809000080	15	LEVER OPERATED	ANSI 150	C	24,427
6142-0020-02-1809000080	20	LEVER OPERATED	ANSI 150	C	26,167
6142-0025-02-1809000088 <sup>(1)</sup>	25	LEVER OPERATED	ANSI 150	C	36,076

<sup>(1)</sup> Locking device

## 6142/02-003

Ball valve, IPV F544, full bore, 1 piece design, alloy-20 body and trim, PTFE seats and packing, design to ANSI B16.10. Manually operated

Locally manufactured



AVK ref. no.	DN mm	Description	Flange drilling	Deliv. code	Gross price ZAR
6142-0025-02-1815000088	25	LEVER OPERATED	ANSI 150	C	43,692

## 6142/03-001

Ball valve, IPV F523, full bore, 2 piece design, body WCB, ball 316 SS, RTFE seats, design to ANSI B16.10. Manually operated

Locally manufactured



AVK ref. no.	DN mm	Description	Flange drilling	Deliv. code	Gross price ZAR
6142-0050-03-1803B00088	50	LEVER OPERATED	ANSI 150	C	54,222
6142-0080-03-1803B00088	80	LEVER OPERATED	ANSI 150	C	75,854
6142-0100-03-1803B00088	100	LEVER OPERATED	ANSI 150	C	105,937
6142-0150-03-1803B00020	150	GEARBOX HANDWHEEL	ANSI 150	C	275,181
6142-0200-03-1803B00020	200	GEARBOX HANDWHEEL	ANSI 150	C	336,661

## 6142/03-002

Ball valve, IPV F533, full bore, 2 piece design, body CF8M, ball 316 SS, RTFE seats, design to ANSI B16.10. Manually operated

Locally manufactured



AVK ref. no.	DN mm	Description	Flange drilling	Deliv. code	Gross price ZAR
6142-0050-03-1809000088	50	LEVER OPERATED	ANSI 150	C	73,134
6142-0080-03-1809000088	80	LEVER OPERATED	ANSI 150	C	112,581
6142-0100-03-1809000088	100	LEVER OPERATED	ANSI 150	C	155,246
6142-0150-03-1809000020	150	GEARBOX HANDWHEEL	ANSI 150	C	372,346
6142-0200-03-1809000020	200	GEARBOX HANDWHEEL	ANSI 150	C	693,523

## 6142/04-001

Ball valve, IPV R623, reduced bore, 1 piece design, body WCB, ball 316 SS, RTFE seats, design to ANSI B16.10. Manually operated

Locally manufactured



AVK ref. no.	DN mm	Description	Flange drilling	Deliv. code	Gross price ZAR
6142-0040-04-1901B00088	40	LEVER OPERATED	ANSI 300	C	28,116
6142-0050-04-1901B00088	50	LEVER OPERATED	ANSI 300	C	39,540
6142-0080-04-1901B00088	80	LEVER OPERATED	ANSI 300	C	52,080
6142-0100-04-1901B00088	100	LEVER OPERATED	ANSI 300	C	64,682
6142-0150-04-1901B00088	150	LEVER OPERATED	ANSI 300	C	117,541
6142-0200-04-1901B00020	200	GEARBOX HANDWHEEL	ANSI 300	C	209,911
6142-0200-04-1901B00088	200	LEVER OPERATED	ANSI 300	C	177,294

## 6142/04-002

Ball valve, IPV R633, reduced bore, 1 piece design, body CF8M, ball 316 SS, RTFE seats, design to ANSI B16.10. Manually operated

Locally manufactured



AVK ref. no.	DN mm	Description	Flange drilling	Deliv. code	Gross price ZAR
6142-0040-04-1909000088	40	LEVER OPERATED	ANSI 300	C	39,180
6142-0050-04-1909000088	50	LEVER OPERATED	ANSI 300	C	59,550
6142-0080-04-1909000088	80	LEVER OPERATED	ANSI 300	C	75,828
6142-0100-04-1909000088	100	LEVER OPERATED	ANSI 300	C	107,467
6142-0150-04-1909000088	150	LEVER OPERATED	ANSI 300	C	190,059
6142-0200-04-1912000020	200	GEARBOX HANDWHEEL	ANSI 300	C	317,249
6142-0200-04-1912000088	200	LEVER OPERATED	ANSI 300	C	289,829

## 6142/04-003

Ball valve, IPV R634, reduced bore, 1 piece design, body CF8M, ball/stem/gland bush alloy 20, RTFE seats, design to ANSI B16.10. Manually operated

Locally manufactured



AVK ref. no.	DN mm	Description	Flange drilling	Deliv. code	Gross price ZAR
6142-0040-04-1912000088	40	LEVER OPERATED	ANSI 300	C	74,903
6142-0050-04-1912000088	50	LEVER OPERATED	ANSI 300	C	104,407
6142-0080-04-1912000088	80	LEVER OPERATED	ANSI 300	C	122,893
6142-0100-04-1912000020	100	GEARBOX HANDWHEEL	ANSI 300	C	201,858
6142-0100-04-1912000088	100	LEVER OPERATED	ANSI 300	C	175,812
6142-0150-04-1912000020	150	GEARBOX HANDWHEEL	ANSI 300	C	318,283
6142-0150-04-1912000088	150	LEVER OPERATED	ANSI 300	C	292,015



## 6142/04-004

Ball valve, IPV R644, reduced bore, 1 piece design, alloy-20 body and trim, PTFE seats and packing, design to ANSI B16.10. Manually operated

Locally manufactured



AVK ref. no.	DN mm	Description	Flange drilling	Deliv. code	Gross price ZAR
6142-0040-04-1915000088	40	LEVER OPERATED	ANSI 300	C	98,597
6142-0050-04-1915000088	50	LEVER OPERATED	ANSI 300	C	131,749
6142-0080-04-1915000088	80	LEVER OPERATED	ANSI 300	C	165,815
6142-0100-04-1915000020	100	GEARBOX HANDWHEEL	ANSI 300	C	241,640
6142-0100-04-1915000088	100	LEVER OPERATED	ANSI 300	C	215,594
6142-0150-04-1915000020	150	GEARBOX HANDWHEEL	ANSI 300	C	375,004
6142-0150-04-1915000088	150	LEVER OPERATED	ANSI 300	C	348,736

## 6142/16-001

Ball valve, IPV F623, full bore, 1 piece design, body WCB, ball 316 SS, RTFE seats, design to ANSI B16.10. Manually operated

Locally manufactured



AVK ref. no.	DN mm	Description	Flange drilling	Deliv. code	Gross price ZAR
6142-0015-16-1903B00088	15	LEVER OPERATED	ANSI 300	C	23,392
6142-0020-16-1903B00088	20	LEVER OPERATED	ANSI 300	C	24,531
6142-0025-16-1903B00088	25	LEVER OPERATED	ANSI 300	C	25,930
6142-0040-16-1903B00088	40	LEVER OPERATED	ANSI 300	C	49,066

## 6142/16-002

Ball valve, IPV F633, full bore, 1 piece design, body CF8M, ball 316 SS, RTFE seats, design to ANSI B16.10. Manually operated

Locally manufactured



AVK ref. no.	DN mm	Description	Flange drilling	Deliv. code	Gross price ZAR
6142-0015-16-1909000088	15	LEVER OPERATED	ANSI 300	C	29,705
6142-0020-16-1909000088	20	LEVER OPERATED	ANSI 300	C	32,474
6142-0025-16-1909000088	25	LEVER OPERATED	ANSI 300	C	37,748
6142-0040-16-1909000088	40	LEVER OPERATED	ANSI 300	C	64,090
6142-0050-16-1909000088	50	LEVER OPERATED	ANSI 300	C	103,453







# AVK CONTROL VALVES

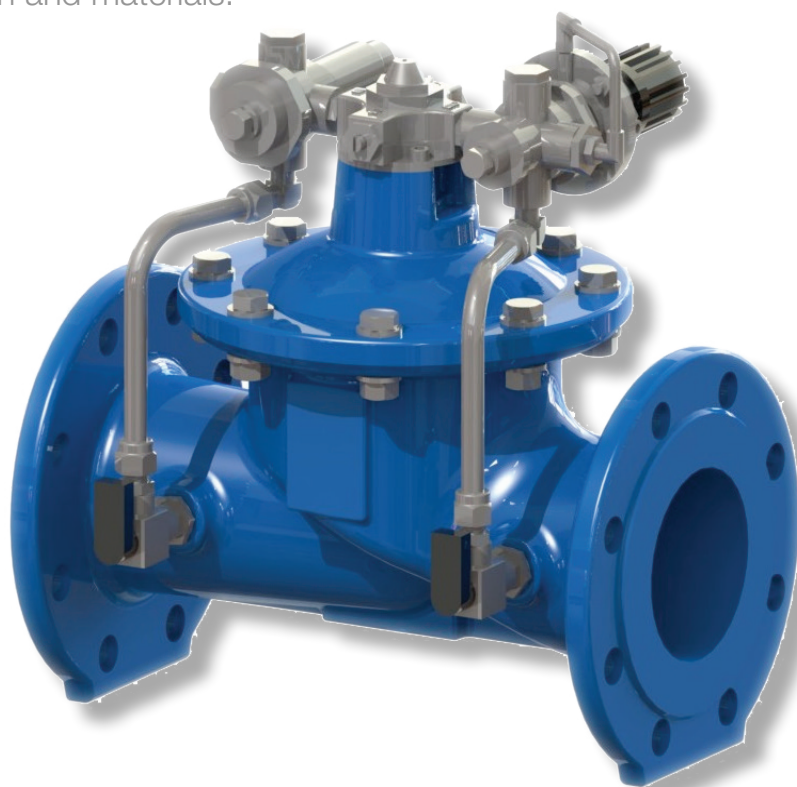
## SMART PRESSURE MANAGEMENT

AVK offers a wide range of control valves used for pressure reducing, pressure sustaining, flow maintaining, pressure relief and modulating level control, all with one thing in common, the consistently high quality in design and materials.

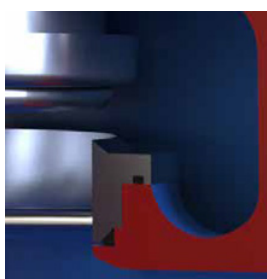
AVK control valves operate by means of the water pressure in the pipeline and are therefore a cost effective non energy consuming valve. All valves are auto adaptive meaning they react automatically to the different boundaries or pre-set conditions. In addition, the valves can be fitted with or interact with other electronic devices to be a part of an intelligent system.

### The most common types of control valves are PRV and PSV valves:

- A pressure reducing control valve (PRV) automatically reduces a higher inlet pressure to a lower outlet pressure regardless of changes in flow rate or inlet pressure
- A pressure sustaining control valve (PSV) automatically maintains a minimum pre-set inlet pressure regardless of changes in flow rate



The application of AVK control valves are vast, and we at AVK are committed to assist you in finding the right solution. Therefore, our product manager team is ready to assistance with sizing and layout according to your needs and specifications.



### Design features of the main valve

- Main valve design in ductile iron casting with fusion bonded epoxy coating to the highest standards
- The uniquely designed diaphragm secures fast reaction to changes in pressure
- Diaphragm in drinking water-approved EPDM
- Parabolic plug design provides precise regulation and stability at low flow. Further more, it reduces noise and vibration
- Lifted seat design prevents damage inside the valve body caused by cavitation. For extreme flow and pressure conditions an anti-cavitation trim can be installed

•

### Feature of the pilot system

- All AVK pilot systems enable easy fitting or changeover of the valve application without replacing the main valve
- Pilot systems are always offered in stainless steel 304 or 316 and provides independent adjustment of pilots controlling pressure pre-set values

**869/200X-001**

Reduced bore control valve,  
pressure reducing, SS-304/DI  
trim, PN10/16

Face-to-face dimension  
according to EN 558, Series  
1

Ductile iron

EPDM rubber, WRAS  
approved

Blue epoxy RAL 5017 300  
µm



AVK ref. no.	DN mm	Flange drilling	Press. Range bar	Theoretical weight/kg	Deliv. code	Gross price ZAR
869-0080-20-1340001	80	PN10/16	5 - 10	24	B	68,923
869-0080-20-1340002	80	PN10/16	10 - 16	24	B	68,923
869-0100-20-1340001	100	PN10/16	5 - 10	28	B	72,033
869-0100-20-1340002	100	PN10/16	10 - 16	28	B	72,097
869-0150-20-1340001	150	PN10/16	5 - 10	46	B	78,359
869-0150-20-1340002	150	PN10/16	10 - 16	46	B	78,359
869-0200-20-0340001	200	PN10	5 - 10	96	B	107,280
869-0200-20-1340001	200	PN16	5 - 10	96	B	108,344
869-0200-20-1340002	200	PN16	10 - 16	96	B	108,344
869-0250-20-0340001	250	PN10	5 - 10	157	B	133,426
869-0250-20-1340001	250	PN16	5 - 10	157	B	134,978
869-0250-20-1340002	250	PN16	10 - 16	157	B	134,978
869-0300-20-0340001	300	PN10	5 - 10	221	B	163,400
869-0300-20-1340001	300	PN16	5 - 10	221	B	165,449
869-0300-20-1340002	300	PN16	10 - 16	221	B	165,449
869-0350-20-0340001	350	PN10	5 - 10	324	C	213,061
869-0350-20-1340001	350	PN16	5 - 10	324	C	213,061
869-0350-20-1340002	350	PN16	10 - 16	324	C	213,061
869-0400-20-0340001	400	PN10	5 - 10	498	C	319,461
869-0400-20-1340001	400	PN16	5 - 10	498	C	319,461
869-0400-20-1340002	400	PN16	10 - 16	498	C	319,461
869-0450-20-0340001	450	PN10	5 - 10	636	C	365,952
869-0450-20-1340001	450	PN16	5 - 10	636	C	365,952
869-0450-20-1340002	450	PN16	10 - 16	636	C	365,952
869-0500-20-0340001	500	PN10	5 - 10	938	C	476,682
869-0500-20-1340001	500	PN16	5 - 10	938	C	476,682
869-0500-20-1340002	500	PN16	10 - 16	938	C	476,682



### 869/201X-001

Reduced bore control valve,  
pressure sustain/relief, SS-  
304/DI trim, PN10/16

Face-to-face dimension  
according to EN 558, Series  
1

Ductile iron

EPDM rubber, WRAS  
approved

Blue epoxy RAL 5017 300  
µm



AVK ref. no.	DN mm	Flange drilling	Press. Range bar	Theoretical weight/kg	Deliv. code	Gross price ZAR
869-0080-20-1340010	80	PN10/16	1.5 - 6	24	B	72,318
869-0080-20-1340011	80	PN10/16	5 - 10	24	B	72,318
869-0080-20-1340012	80	PN10/16	10 - 16	24	B	72,318
869-0100-20-1340010	100	PN10/16	1.5 - 6	28	B	75,493
869-0100-20-1340011	100	PN10/16	5 - 10	28	B	75,493
869-0100-20-1340012	100	PN10/16	10 - 16	28	B	75,493
869-0150-20-1340010	150	PN10/16	1.5 - 6	46	B	81,755
869-0150-20-1340011	150	PN10/16	5 - 10	46	B	81,755
869-0150-20-1340012	150	PN10/16	10 - 16	46	B	81,755
869-0200-20-0340010	200	PN10	1.5 - 6	96	B	110,676
869-0200-20-0340011	200	PN10	5 - 10	96	B	110,676
869-0200-20-1340010	200	PN16	1.5 - 6	96	B	111,740
869-0200-20-1340011	200	PN16	5 - 10	96	B	111,740
869-0200-20-1340012	200	PN16	10 - 16	96	B	111,740
869-0250-20-0340010	250	PN10	1.5 - 6	157	B	136,822
869-0250-20-0340011	250	PN10	5 - 10	157	B	136,822
869-0250-20-1340010	250	PN16	1.5 - 6	157	B	138,374
869-0250-20-1340011	250	PN16	5 - 10	157	B	138,374
869-0250-20-1340012	250	PN16	10 - 16	157	B	138,374
869-0300-20-0340010	300	PN10	1.5 - 6	221	B	163,400
869-0300-20-0340011	300	PN10	5 - 10	221	B	163,400
869-0300-20-1340010	300	PN16	1.5 - 6	221	B	165,449
869-0300-20-1340011	300	PN16	5 - 10	221	B	165,449
869-0300-20-1340012	300	PN16	10 - 16	221	B	165,449
869-0350-20-0340010	350	PN10	1.5 - 6	324	C	216,456
869-0350-20-0340011	350	PN10	5 - 10	324	C	216,456
869-0350-20-1340010	350	PN16	1.5 - 6	324	C	216,456
869-0350-20-1340011	350	PN16	5 - 10	324	C	216,456
869-0350-20-1340012	350	PN16	10 - 16	324	C	216,456
869-0400-20-0340010	400	PN10	1.5 - 6	498	C	322,857
869-0400-20-1340010	400	PN16	1.5 - 6	498	C	322,857
869-0450-20-0340010	450	PN10	1.5 - 6	636	C	369,348
869-0450-20-0340011	450	PN10	5 - 10	636	C	344,113
869-0450-20-1340010	450	PN16	1.5 - 6	636	C	369,348
869-0450-20-1340011	450	PN16	5 - 10	636	C	344,113
869-0450-20-1340012	450	PN16	10 - 16	636	C	344,113
869-0500-20-0340010	500	PN10	1.5 - 6	938	C	480,077
869-0500-20-1340010	500	PN16	1.5 - 6	938	C	480,077

### 869/2034-001

Reduced bore control valve,  
float level, modulating, SS-  
304/DI trim, PN10/16

Face-to-face dimension  
according to EN 558, Series  
1

Ductile iron

EPDM rubber, WRAS  
approved

Blue epoxy RAL 5017 300  
µm



AVK ref. no.	DN mm	Flange drilling	Theoretical weight/kg	Deliv. code	Gross price ZAR
869-0080-20-1340034	80	PN10/16	25	B	60,264
869-0100-20-1340034	100	PN10/16	30	B	64,967
869-0150-20-1340034	150	PN10/16	47	B	71,228
869-0200-20-0340034	200	PN10	97	B	100,150
869-0200-20-1340034	200	PN16	97	B	101,214
869-0250-20-0340034	250	PN10	158	B	127,993
869-0250-20-1340034	250	PN16	158	B	129,545
869-0300-20-1340034	300	PN16	222	B	160,016
869-0350-20-0340034	350	PN10	326	C	215,268
869-0350-20-1340034	350	PN16	326	C	215,268
869-0400-20-0340034	400	PN10	507	C	321,668
869-0450-20-0340034	450	PN10	647	C	368,159
869-0450-20-1340034	450	PN16	647	C	368,159



**869/2031-001**

Reduced bore control valve,  
altitude level, one way, SS-  
304/DI trim, PN10/16

Face-to-face dimension  
according to EN 558, Series  
1

Ductile iron

EPDM rubber, WRAS  
approved

Blue epoxy RAL 5017 300  
µm

Item numbers ending in -30  
equals to 0.01 to .06 bar

Item numbers ending in -31  
equals to 0.5 to 2.1 bar



AVK ref. no.	DN mm	PN Class	Flange drilling	Theoretical weight/kg	Deliv. code	Gross price ZAR
869-0080-20-1340030	80	PN 10/16	PN10/16	24	B	183,183
869-0080-20-1340031	80	PN 10/16	PN10/16	24	B	183,183
869-0100-20-1340030	100	PN 10/16	PN10/16	28	B	186,358
869-0100-20-1340031	100	PN 10/16	PN10/16	28	B	186,358
869-0150-20-1340030	150	PN 10/16	PN10/16	46	B	192,620
869-0150-20-1340031	150	PN 10/16	PN10/16	46	B	192,620
869-0200-20-0340030	200	PN10	PN10	96	B	221,541
869-0200-20-0340031	200	PN10	PN10	96	B	221,541
869-0200-20-1340030	200	PN16	PN16	96	B	222,605
869-0200-20-1340031	200	PN16	PN16	96	B	222,605
869-0250-20-0340030	250	PN10	PN10	157	B	247,687
869-0250-20-0340031	250	PN10	PN10	157	B	247,687
869-0250-20-1340030	250	PN16	PN16	157	B	249,239
869-0250-20-1340031	250	PN16	PN16	157	B	249,239
869-0300-20-0340030	300	PN10	PN10	221	B	285,301
869-0300-20-0340031	300	PN10	PN10	221	B	285,301
869-0300-20-1340030	300	PN16	PN16	221	B	287,350
869-0300-20-1340031	300	PN16	PN16	221	B	287,350
869-0350-20-0340030	350	PN10	PN10	324	C	333,264
869-0350-20-0340031	350	PN10	PN10	324	C	333,264
869-0350-20-1340030	350	PN16	PN16	324	C	333,264
869-0350-20-1340031	350	PN16	PN16	324	C	333,264
869-0400-20-0340030	400	PN10	PN10	505	C	439,664
869-0400-20-1340030	400	PN16	PN16	505	C	439,664
869-0450-20-0340030	450	PN10	PN10	645	C	486,155
869-0450-20-0340031	450	PN10	PN10	645	C	486,155
869-0450-20-1340030	450	PN16	PN16	645	C	486,155
869-0450-20-1340031	450	PN16	PN16	645	C	486,155
869-0500-20-0340031	500	PN10	PN10	945	C	596,885


**869/202X-001**

Reduced bore control valve,  
constant flow, SS-304/DI  
trim, PN10/16

Face-to-face dimension  
according to EN 558, Series  
1

Ductile iron

EPDM rubber

Blue epoxy RAL 5017 300  
µm



AVK ref. no.	DN mm	PN Class	Flange drilling	Flow range m3/h	Theoretical weight/kg	Deliv. code	Gross price ZAR
869-0080-20-1340020	80	PN16	PN10/16	7 - 18	26	B	70,182
869-0080-20-1340021	80	PN16	PN10/16	14 - 36	26	B	76,563
869-0080-20-1340022	80	PN16	PN10/16	27 - 65	26	B	76,563
869-0100-20-1340020	100	PN16	PN10/16	7 - 18	30	B	74,497
869-0100-20-1340021	100	PN16	PN10/16	14 - 34	30	B	81,265
869-0100-20-1340022	100	PN16	PN10/16	23 - 57	30	B	81,265
869-0150-20-1340020	150	PN16	PN10/16	30 - 75	48	B	82,889
869-0150-20-1340021	150	PN16	PN10/16	50 - 120	48	B	90,413
869-0150-20-1340022	150	PN16	PN10/16	80 - 200	48	B	90,413
869-0200-20-0340020	200	PN10	PN10	50 - 130	98	B	114,604
869-0200-20-0340021	200	PN10	PN10	115 - 290	98	B	123,919
869-0200-20-0340022	200	PN10	PN10	150 - 339	98	B	123,919
869-0200-20-1340020	200	PN16	PN16	50 - 130	98	B	114,604
869-0200-20-1340021	200	PN16	PN16	115 - 290	98	B	124,983
869-0200-20-1340022	200	PN16	PN16	150 - 365	98	B	124,983
869-0250-20-0340020	250	PN10	PN10	80 - 200	159	B	142,855
869-0250-20-0340021	250	PN10	PN10	140 - 350	159	B	154,224
869-0250-20-0340022	250	PN10	PN10	230 - 530	159	B	154,224
869-0250-20-1340020	250	PN16	PN16	85 - 200	159	B	142,855
869-0250-20-1340021	250	PN16	PN16	140 - 350	159	B	155,776
869-0250-20-1340022	250	PN16	PN16	230 - 570	159	B	155,776
869-0300-20-0340020	300	PN10	PN10	120 - 300	223	B	175,483
869-0300-20-0340021	300	PN10	PN10	175 - 430	223	B	189,291
869-0300-20-0340022	300	PN10	PN10	340 - 762	223	B	189,291
869-0300-20-1340020	300	PN16	PN16	120 - 300	223	B	175,483
869-0300-20-1340021	300	PN16	PN16	175 - 430	223	B	191,340
869-0300-20-1340022	300	PN16	PN16	340 - 825	223	B	191,340
869-0350-20-0340020	350	PN10	PN10	170 - 420	326	C	231,677
869-0350-20-0340021	350	PN10	PN10	225 - 555	326	C	249,648
869-0350-20-0340022	350	PN10	PN10	510 - 1039	326	C	249,648
869-0350-20-1340020	350	PN16	PN16	170 - 420	326	C	231,677
869-0350-20-1340021	350	PN16	PN16	225 - 555	326	C	249,648
869-0350-20-1340022	350	PN16	PN16	510 - 1250	326	C	249,648
869-0400-20-1340021	400	PN16	PN16	370 - 905	505	C	363,943
869-0400-20-1340022	400	PN16	PN16	525 - 1285	505	C	363,943
869-0450-20-0340020	450	PN10	PN10	280 - 690	645	C	399,330
869-0450-20-0340021	450	PN10	PN10	445 - 1090	645	C	429,534
869-0450-20-1340020	450	PN16	PN16	280 - 690	645	C	399,330
869-0450-20-1340021	450	PN16	PN16	445 - 1090	645	C	429,534
869-0450-20-1340022	450	PN16	PN16	675 - 1640	645	C	429,534
869-0600-20-1340022	600	PN16	PN16	970 - 2360	1292	C	658,426

**869/2017-001**

Reduced bore control valve,  
surge anticipating/relief, SS-  
304/DI trim, PN10/16

Face-to-face dimension  
according to EN 558, Series  
1

Ductile iron

EPDM rubber

Blue epoxy RAL 5017 300  
µm



AVK ref. no.	DN mm	Flange drilling	Lo press. range/bar	Hi press. range/bar	Theoretical weight/kg	Deliv. code	Gross price ZAR
869-0080-20-1340014	80	PN10/16	0.6 - 6	1.5 - 6	26	C	130,014
869-0080-20-1340015	80	PN10/16	0.6 - 6	5 - 10	26	C	145,573
869-0100-20-1340014	100	PN10/16	0.6 - 6	1.5 - 6	30	C	71,121
869-0100-20-1340015	100	PN10/16	0.6 - 6	5 - 10	30	C	148,552
869-0150-20-1340014	150	PN10/16	0.6 - 6	1.5 - 6	48	C	77,383
869-0150-20-1340015	150	PN10/16	0.6 - 6	5 - 10	48	C	155,009
869-0200-20-0340014	200	PN10	0.6 - 6	1.5 - 6	98	C	106,304
869-0200-20-0340015	200	PN10	0.6 - 6	5 - 10	98	C	194,405
869-0200-20-1340014	200	PN16	0.6 - 6	1.5 - 6	98	C	107,368
869-0200-20-1340015	200	PN16	0.6 - 6	5 - 10	98	C	133,427
869-0250-20-0340014	250	PN10	0.6 - 6	1.5 - 6	159	C	132,450
869-0250-20-0340015	250	PN10	0.6 - 6	5 - 10	159	C	194,518
869-0250-20-1340014	250	PN16	0.6 - 6	1.5 - 6	159	C	134,002
869-0250-20-1340015	250	PN16	0.6 - 6	5 - 10	159	C	160,061
869-0300-20-0340014	300	PN10	0.6 - 6	1.5 - 6	223	C	159,028
869-0300-20-0340015	300	PN10	0.6 - 6	5 - 10	223	C	247,129
869-0300-20-1340014	300	PN16	0.6 - 6	1.5 - 6	223	C	161,077
869-0300-20-1340015	300	PN16	0.6 - 6	5 - 10	223	C	187,136
869-0350-20-0340014	350	PN10	0.6 - 6	1.5 - 6	326	C	206,991
869-0350-20-0340015	350	PN10	0.6 - 6	5 - 10	326	C	312,051
869-0350-20-1340014	350	PN16	0.6 - 6	1.5 - 6	326	C	206,991
869-0350-20-1340015	350	PN16	0.6 - 6	5 - 10	326	C	250,009

**869/2098-001**

Reduced bore control valve,  
dual pressure, timer  
controlled, SS-304/DI trim,  
PN10/16

Face-to-face dimension  
according to EN 558, Series  
1

Ductile iron

EPDM rubber, WRAS  
approved

Blue epoxy RAL 5017 300  
µm



AVK ref. no.	DN mm	Flange drilling	Theoretical weight/kg	Deliv. code	Gross price ZAR
869-0080-20-134009D9	80	PN10/16	25	C	105,159
869-0100-20-134009D9	100	PN10/16	29	C	108,334
869-0150-20-134009D9	150	PN10/16	47	C	114,595
869-0200-20-034009D9	200	PN10	97	C	143,517
869-0200-20-134009D9	200	PN16	97	C	144,581
869-0250-20-034009D9	250	PN10	158	C	169,662
869-0250-20-134009D9	250	PN16	158	C	171,215
869-0300-20-034009D9	300	PN10	221	C	196,241
869-0300-20-134009D9	300	PN16	221	C	198,289
869-0350-20-034009D9	350	PN10	325	C	167,633
869-0350-20-134009D9	350	PN16	325	C	167,633
869-0450-20-034009D9	450	PN10	636	C	320,525
869-0450-20-134009D9	450	PN16	636	C	320,525
869-0500-20-034009D9	500	PN10	938	C	431,254
869-0500-20-134009D9	500	PN16	938	C	431,254


**6139/07-001**

AVK Baker Control Valve,  
B100, Basic valve, no pipe  
work or hook-up  
Ductile iron

Locally manufactured



AVK ref. no.	DN mm	PN Class	Flange drilling	Deliv. code	Gross price ZAR
6139-0050-07-0813300	50	PN25	PN25	B	34,973
6139-0080-07-0813300	80	PN25	PN25	B	44,113
6139-0100-07-0813300	100	PN25	PN25	B	60,676
6139-0150-07-0813300	150	PN25	PN25	B	112,426
6139-0200-07-0813300	200	PN25	PN25	B	223,535
6139-0250-07-0813300	250	PN25	PN25	C	323,564
6139-0300-07-0813300	300	PN25	PN25	C	524,162
6139-0350-07-0813300	350	PN25	PN25	C	684,567
6139-0400-07-0813300	400	PN25	PN25	C	881,824
6139-0450-07-0813300	450	PN25	PN25	C	940,677
6139-0500-07-0813300	500	PN25	PN25	C	1,307,746

**6139/08-001**

AVK Baker Control Valve,  
B100, Basic valve, no pipe  
work or hook-up  
Ductile iron

Locally manufactured



AVK ref. no.	DN mm	PN Class	Flange drilling	Deliv. code	Gross price ZAR
6139-0050-08-0913300	50	PN40	PN40	B	34,973
6139-0080-08-0913300	80	PN40	PN40	B	44,113
6139-0100-08-0913300	100	PN40	PN40	B	65,089
6139-0150-08-0913300	150	PN40	PN40	B	119,264
6139-0200-08-0913300	200	PN40	PN40	B	237,137
6139-0250-08-0913300	250	PN40	PN40	C	341,085
6139-0300-08-0913300	300	PN40	PN40	C	585,904
6139-0350-08-0913300	350	PN40	PN40	C	739,651
6139-0400-08-0913300	400	PN40	PN40	C	967,061
6139-0450-08-0913300	450	PN40	PN40	C	1,038,088

**6139/07-003**

AVK Baker Control Valve,  
B110-14, Bi-level Control  
Valve, Differential Float  
Ductile iron

Locally manufactured



AVK ref. no.	DN mm	PN Class	Flange drilling	Deliv. code	Gross price ZAR
6139-0050-07-0813302000	50	PN25	PN25	B	98,958
6139-0080-07-0813302000	80	PN25	PN25	B	108,098
6139-0100-07-0813302000	100	PN25	PN25	B	125,877
6139-0150-07-0813302000	150	PN25	PN25	B	177,627
6139-0200-07-0813302000	200	PN25	PN25	B	290,504
6139-0250-07-0813302000	250	PN25	PN25	C	390,533
6139-0300-07-0813302000	300	PN25	PN25	C	591,131
6139-0350-07-0813302000	350	PN25	PN25	C	751,535
6139-0400-07-0813302000	400	PN25	PN25	C	958,153
6139-0450-07-0813302000	450	PN25	PN25	C	1,017,005
6139-0500-07-0813302000	500	PN25	PN25	C	1,384,075

**6139/08-003**

AVK Baker Control Valve,  
B110-14, Bi-level Control  
Valve, Differential Float  
Ductile iron

Locally manufactured



AVK ref. no.	DN mm	PN Class	Flange drilling	Deliv. code	Gross price ZAR
6139-0050-08-0913302000	50	PN40	PN40	B	100,415
6139-0080-08-0913302000	80	PN40	PN40	B	109,555
6139-0100-08-0913302000	100	PN40	PN40	B	131,931
6139-0150-08-0913302000	150	PN40	PN40	B	186,106
6139-0200-08-0913302000	200	PN40	PN40	B	306,010
6139-0250-08-0913302000	250	PN40	PN40	C	409,958
6139-0300-08-0913302000	300	PN40	PN40	C	654,777
6139-0350-08-0913302000	350	PN40	PN40	C	808,524
6139-0400-08-0913302000	400	PN40	PN40	C	1,046,698
6139-0450-08-0913302000	450	PN40	PN40	C	1,117,725



**6139/07-004**

AVK Baker Control Valve,  
B127-1, Altitude Control  
Valves w/ Elevated Tank,  
Pressure Reducing  
Ductile iron

Locally manufactured



AVK ref. no.	DN mm	PN Class	Flange drilling	Deliv. code	Gross price ZAR
6139-0050-07-0813303000	50	PN25	PN25	B	114,028
6139-0080-07-0813303000	80	PN25	PN25	B	123,168
6139-0100-07-0813303000	100	PN25	PN25	B	140,947
6139-0150-07-0813303000	150	PN25	PN25	B	192,697
6139-0200-07-0813303000	200	PN25	PN25	B	305,573
6139-0250-07-0813303000	250	PN25	PN25	C	405,602
6139-0300-07-0813303000	300	PN25	PN25	C	606,200
6139-0350-07-0813303000	350	PN25	PN25	C	766,605
6139-0400-07-0813303000	400	PN25	PN25	C	973,222
6139-0450-07-0813303000	450	PN25	PN25	C	1,032,075
6139-0500-07-0813303000	500	PN25	PN25	C	1,399,144

**6139/08-004**

AVK Baker Control Valve,  
B127-1, Altitude Control  
Valves w/ Elevated Tank,  
Pressure Reducing  
Ductile iron

Locally manufactured



AVK ref. no.	DN mm	PN Class	Flange drilling	Deliv. code	Gross price ZAR
6139-0050-08-0913303000	50	PN40	PN40	B	115,485
6139-0080-08-0913303000	80	PN40	PN40	B	124,625
6139-0100-08-0913303000	100	PN40	PN40	B	147,000
6139-0150-08-0913303000	150	PN40	PN40	B	201,175
6139-0200-08-0913303000	200	PN40	PN40	B	321,080
6139-0250-08-0913303000	250	PN40	PN40	C	425,028
6139-0300-08-0913303000	300	PN40	PN40	C	669,847
6139-0350-08-0913303000	350	PN40	PN40	C	823,594
6139-0400-08-0913303000	400	PN40	PN40	C	1,061,767
6139-0450-08-0913303000	450	PN40	PN40	C	1,132,794

**6139/07-005**

AVK Baker Control Valve,  
B113-6, Solenoid Operated  
Control Valve  
Ductile iron

Locally manufactured



AVK ref. no.	DN mm	PN Class	Flange drilling	Deliv. code	Gross price ZAR
6139-0050-07-0813307000	50	PN25	PN25	B	51,374
6139-0080-07-0813307000	80	PN25	PN25	B	60,514
6139-0100-07-0813307000	100	PN25	PN25	B	78,293
6139-0150-07-0813307000	150	PN25	PN25	B	130,043
6139-0200-07-0813307000	200	PN25	PN25	B	242,920
6139-0250-07-0813307000	250	PN25	PN25	C	342,949
6139-0300-07-0813307000	300	PN25	PN25	C	543,547
6139-0350-07-0813307000	350	PN25	PN25	C	703,951
6139-0400-07-0813307000	400	PN25	PN25	C	910,569
6139-0450-07-0813307000	450	PN25	PN25	C	969,421
6139-0500-07-0813307000	500	PN25	PN25	C	1,336,490

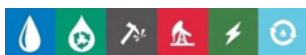
**6139/08-005**

AVK Baker Control Valve,  
B113-6, Solenoid Operated  
Control Valve  
Ductile iron

Locally manufactured



AVK ref. no.	DN mm	PN Class	Flange drilling	Deliv. code	Gross price ZAR
6139-0050-08-0913307000	50	PN40	PN40	B	62,962
6139-0080-08-0913307000	80	PN40	PN40	B	72,102
6139-0100-08-0913307000	100	PN40	PN40	B	94,477
6139-0150-08-0913307000	150	PN40	PN40	B	148,652
6139-0200-08-0913307000	200	PN40	PN40	B	268,557
6139-0250-08-0913307000	250	PN40	PN40	C	372,505
6139-0300-08-0913307000	300	PN40	PN40	C	617,324
6139-0350-08-0913307000	350	PN40	PN40	C	771,071
6139-0400-08-0913307000	400	PN40	PN40	C	1,009,244
6139-0450-08-0913307000	450	PN40	PN40	C	1,080,271


**6139/07-007**

AVK Baker Control Valve,  
B114, Rate of Flow  
Ductile iron

Locally manufactured



AVK ref. no.	DN mm	PN Class	Flange drilling	Deliv. code	Gross price ZAR
6139-0050-07-0813313000	50	PN25	PN25	B	89,462
6139-0080-07-0813313000	80	PN25	PN25	B	99,138
6139-0100-07-0813313000	100	PN25	PN25	B	117,622
6139-0150-07-0813313000	150	PN25	PN25	B	169,966
6139-0200-07-0813313000	200	PN25	PN25	B	286,055
6139-0250-07-0813313000	250	PN25	PN25	C	390,192
6139-0300-07-0813313000	300	PN25	PN25	C	596,134
6139-0350-07-0813313000	350	PN25	PN25	C	760,817
6139-0400-07-0813313000	400	PN25	PN25	C	984,801
6139-0450-07-0813313000	450	PN25	PN25	C	1,049,835
6139-0500-07-0813313000	500	PN25	PN25	C	1,420,740

**6139/08-007**

AVK Baker Control Valve,  
B114, Rate of Flow  
Ductile iron

Locally manufactured



AVK ref. no.	DN mm	PN Class	Flange drilling	Deliv. code	Gross price ZAR
6139-0050-08-0913313000	50	PN40	PN40	B	91,575
6139-0080-08-0913313000	80	PN40	PN40	B	101,358
6139-0100-08-0913313000	100	PN40	PN40	B	124,580
6139-0150-08-0913313000	150	PN40	PN40	B	179,468
6139-0200-08-0913313000	200	PN40	PN40	B	303,227
6139-0250-08-0913313000	250	PN40	PN40	C	412,105
6139-0300-08-0913313000	300	PN40	PN40	C	663,337
6139-0350-08-0913313000	350	PN40	PN40	C	822,218
6139-0400-08-0913313000	400	PN40	PN40	C	1,081,231
6139-0450-08-0913313000	450	PN40	PN40	C	1,159,676

**6139/07-011**

AVK Baker Control Valve,  
B115-2, Pressure  
Reducing/Sustaining Control  
Valve

Ductile iron

Locally manufactured



AVK ref. no.	DN mm	PN Class	Flange drilling	Deliv. code	Gross price ZAR
6139-0050-07-0813315000	50	PN25	PN25	B	95,679
6139-0080-07-0813315000	80	PN25	PN25	B	104,819
6139-0100-07-0813315000	100	PN25	PN25	B	122,598
6139-0150-07-0813315000	150	PN25	PN25	B	174,348
6139-0200-07-0813315000	200	PN25	PN25	B	287,225
6139-0250-07-0813315000	250	PN25	PN25	C	387,254
6139-0300-07-0813315000	300	PN25	PN25	C	587,852
6139-0350-07-0813315000	350	PN25	PN25	C	748,256
6139-0400-07-0813315000	400	PN25	PN25	C	954,874
6139-0450-07-0813315000	450	PN25	PN25	C	1,013,727
6139-0500-07-0813315000	500	PN25	PN25	C	1,380,796

**6139/08-011**

AVK Baker Control Valve,  
B115-2, Pressure  
Reducing/Sustaining Control  
Valve

Ductile iron

Locally manufactured



AVK ref. no.	DN mm	PN Class	Flange drilling	Deliv. code	Gross price ZAR
6139-0050-08-0913315000	50	PN40	PN40	B	86,526
6139-0080-08-0913315000	80	PN40	PN40	B	95,666
6139-0100-08-0913315000	100	PN40	PN40	B	118,041
6139-0150-08-0913315000	150	PN40	PN40	B	172,216
6139-0200-08-0913315000	200	PN40	PN40	B	292,121
6139-0250-08-0913315000	250	PN40	PN40	C	396,069
6139-0300-08-0913315000	300	PN40	PN40	C	640,888
6139-0350-08-0913315000	350	PN40	PN40	C	794,635
6139-0400-08-0913315000	400	PN40	PN40	C	1,032,808
6139-0450-08-0913315000	450	PN40	PN40	C	1,103,835

**6139/07-002**

AVK Baker Control Valve,  
B110-10, On-Level Control  
Valve, Modulating Flow  
Control

Ductile iron

Locally manufactured



AVK ref. no.	DN mm	PN Class	Flange drilling	Deliv. code	Gross price ZAR
6139-0050-07-0813301000	50	PN25	PN25	B	54,958
6139-0080-07-0813301000	80	PN25	PN25	B	64,098
6139-0100-07-0813301000	100	PN25	PN25	B	81,877
6139-0150-07-0813301000	150	PN25	PN25	B	133,627
6139-0200-07-0813301000	200	PN25	PN25	B	246,504
6139-0250-07-0813301000	250	PN25	PN25	C	346,533
6139-0300-07-0813301000	300	PN25	PN25	C	547,131
6139-0350-07-0813301000	350	PN25	PN25	C	707,535
6139-0400-07-0813301000	400	PN25	PN25	C	914,153
6139-0450-07-0813301000	450	PN25	PN25	C	973,005
6139-0500-07-0813301000	500	PN25	PN25	C	1,340,075

**6139/08-002**

AVK Baker Control Valve,  
B110-10, On-Level Control  
Valve, Modulating Flow  
Control

Ductile iron

Locally manufactured



AVK ref. no.	DN mm	PN Class	Flange drilling	Deliv. code	Gross price ZAR
6139-0050-08-0913301000	50	PN40	PN40	B	56,415
6139-0080-08-0913301000	80	PN40	PN40	B	65,555
6139-0100-08-0913301000	100	PN40	PN40	B	87,931
6139-0150-08-0913301000	150	PN40	PN40	B	142,106
6139-0200-08-0913301000	200	PN40	PN40	B	262,010
6139-0250-08-0913301000	250	PN40	PN40	C	365,958
6139-0300-08-0913301000	300	PN40	PN40	C	610,777
6139-0350-08-0913301000	350	PN40	PN40	C	764,524
6139-0400-08-0913301000	400	PN40	PN40	C	1,002,698
6139-0450-08-0913301000	450	PN40	PN40	C	1,073,725

**6139/07-010**

AVK Baker Control Valve,  
B115, Pressure Reducing  
Control Valve

Ductile iron

Locally manufactured



AVK ref. no.	DN mm	PN Class	Flange drilling	Deliv. code	Gross price ZAR
6139-0050-07-0813314002	50	PN25	PN25	B	62,228
6139-0080-07-0813314002	80	PN25	PN25	B	71,368
6139-0100-07-0813314002	100	PN25	PN25	B	89,147
6139-0150-07-0813314002	150	PN25	PN25	B	140,897
6139-0200-07-0813314002	200	PN25	PN25	B	253,773
6139-0250-07-0813314002	250	PN25	PN25	C	353,802
6139-0300-07-0813314002	300	PN25	PN25	C	554,401
6139-0350-07-0813314002	350	PN25	PN25	C	714,805
6139-0400-07-0813314002	400	PN25	PN25	C	921,422
6139-0450-07-0813314002	450	PN25	PN25	C	980,275
6139-0500-07-0813314002	500	PN25	PN25	C	1,347,344

**6139/08-010**

AVK Baker Control Valve,  
B115, Pressure Reducing  
Control Valve

Ductile iron

Locally manufactured



AVK ref. no.	DN mm	PN Class	Flange drilling	Deliv. code	Gross price ZAR
6139-0050-08-0913314004	50	PN40	PN40	B	63,685
6139-0080-08-0913314004	80	PN40	PN40	B	72,825
6139-0100-08-0913314004	100	PN40	PN40	B	95,201
6139-0150-08-0913314004	150	PN40	PN40	B	149,375
6139-0200-08-0913314004	200	PN40	PN40	B	269,280
6139-0250-08-0913314004	250	PN40	PN40	C	373,228
6139-0300-08-0913314004	300	PN40	PN40	C	618,047
6139-0350-08-0913314004	350	PN40	PN40	C	771,794
6139-0400-08-0913314004	400	PN40	PN40	C	1,009,968
6139-0450-08-0913314004	450	PN40	PN40	C	1,080,995


**6139/07-006**

AVK Baker Control Valve,  
B113-21, Pump Control  
Valve

Ductile iron

Locally manufactured



AVK ref. no.	DN mm	PN Class	Flange drilling	Deliv. code	Gross price ZAR
6139-0050-07-0813309000	50	PN25	PN25	B	105,617
6139-0080-07-0813309000	80	PN25	PN25	B	114,757
6139-0100-07-0813309000	100	PN25	PN25	B	132,537
6139-0150-07-0813309000	150	PN25	PN25	B	184,287
6139-0200-07-0813309000	200	PN25	PN25	B	297,484
6139-0250-07-0813309000	250	PN25	PN25	C	397,513
6139-0300-07-0813309000	300	PN25	PN25	C	598,111
6139-0350-07-0813309000	350	PN25	PN25	C	758,516
6139-0400-07-0813309000	400	PN25	PN25	C	965,970
6139-0450-07-0813309000	450	PN25	PN25	C	1,024,823
6139-0500-07-0813309000	500	PN25	PN25	C	1,391,892

**6139/08-006**

AVK Baker Control Valve,  
B113-21, Pump Control  
Valve

Ductile iron

Locally manufactured



AVK ref. no.	DN mm	PN Class	Flange drilling	Deliv. code	Gross price ZAR
6139-0050-08-0913309000	50	PN40	PN40	B	107,929
6139-0080-08-0913309000	80	PN40	PN40	B	117,069
6139-0100-08-0913309000	100	PN40	PN40	B	139,444
6139-0150-08-0913309000	150	PN40	PN40	B	193,619
6139-0200-08-0913309000	200	PN40	PN40	B	313,845
6139-0250-08-0913309000	250	PN40	PN40	C	417,793
6139-0300-08-0913309000	300	PN40	PN40	C	662,612
6139-0350-08-0913309000	350	PN40	PN40	C	816,359
6139-0400-08-0913309000	400	PN40	PN40	C	1,055,370
6139-0450-08-0913309000	450	PN40	PN40	C	1,126,397

**6139/07-013**

AVK Baker Control Valve,  
B116-52, Surge Anticipator  
Control Valve

Ductile iron

Locally manufactured



AVK ref. no.	DN mm	PN Class	Flange drilling	Deliv. code	Gross price ZAR
6139-0050-07-0813322000	50	PN25	PN25	B	95,679
6139-0080-07-0813322000	80	PN25	PN25	B	104,819
6139-0100-07-0813322000	100	PN25	PN25	B	122,598
6139-0150-07-0813322000	150	PN25	PN25	B	174,348
6139-0200-07-0813322000	200	PN25	PN25	B	287,225
6139-0250-07-0813322000	250	PN25	PN25	C	387,254
6139-0300-07-0813322000	300	PN25	PN25	C	587,852
6139-0350-07-0813322000	350	PN25	PN25	C	748,256
6139-0400-07-0813322000	400	PN25	PN25	C	954,874
6139-0450-07-0813322000	450	PN25	PN25	C	1,013,727
6139-0500-07-0813322000	500	PN25	PN25	C	1,380,796

**6139/08-013**

AVK Baker Control Valve,  
B116-52, Surge Anticipator  
Control Valve

Ductile iron

Locally manufactured



AVK ref. no.	DN mm	PN Class	Flange drilling	Deliv. code	Gross price ZAR
6139-0050-08-0913322000	50	PN40	PN40	B	97,136
6139-0080-08-0913322000	80	PN40	PN40	B	106,276
6139-0100-08-0913322000	100	PN40	PN40	B	128,652
6139-0150-08-0913322000	150	PN40	PN40	B	182,827
6139-0200-08-0913322000	200	PN40	PN40	B	302,732
6139-0250-08-0913322000	250	PN40	PN40	C	406,679
6139-0300-08-0913322000	300	PN40	PN40	C	651,498
6139-0350-08-0913322000	350	PN40	PN40	C	805,245
6139-0400-08-0913322000	400	PN40	PN40	C	1,043,419
6139-0450-08-0913322000	450	PN40	PN40	C	1,114,446



**6139/07-012**

AVK Baker Control Valve,  
B116, Pressure  
Relief/Sustaining Control  
Valve

Ductile iron

Locally manufactured



AVK ref. no.	DN mm	PN Class	Flange drilling	Deliv. code	Gross price ZAR
6139-0050-07-08-13-3-20-000	50	PN25	PN25	B	78,139
6139-0080-07-08-13-3-20-000	80	PN25	PN25	B	87,280
6139-0100-07-08-13-3-20-000	100	PN25	PN25	B	105,059
6139-0150-07-08-13-3-20-000	150	PN25	PN25	B	156,809
6139-0200-07-08-13-3-20-000	200	PN25	PN25	B	269,685
6139-0250-07-08-13-3-20-000	250	PN25	PN25	C	369,714
6139-0300-07-08-13-3-20-000	300	PN25	PN25	C	570,312
6139-0350-07-08-13-3-20-000	350	PN25	PN25	C	730,717
6139-0400-07-08-13-3-20-000	400	PN25	PN25	C	937,334
6139-0450-07-08-13-3-20-000	450	PN25	PN25	C	996,187
6139-0500-07-08-13-3-20-000	500	PN25	PN25	C	1,363,256

**6139/08-012**

AVK Baker Control Valve,  
B116, Pressure  
Relief/Sustaining Control  
Valve

Ductile iron

Locally manufactured



AVK ref. no.	DN mm	PN Class	Flange drilling	Deliv. code	Gross price ZAR
6139-0050-08-0913320000	50	PN40	PN40	B	68,986
6139-0080-08-0913320000	80	PN40	PN40	B	78,126
6139-0100-08-0913320000	100	PN40	PN40	B	100,502
6139-0150-08-0913320000	150	PN40	PN40	B	154,676
6139-0200-08-0913320000	200	PN40	PN40	B	274,581
6139-0250-08-0913320000	250	PN40	PN40	C	378,529
6139-0300-08-0913320000	300	PN40	PN40	C	623,348
6139-0350-08-0913320000	350	PN40	PN40	C	777,095
6139-0400-08-0913320000	400	PN40	PN40	C	1,015,269
6139-0450-08-0913320000	450	PN40	PN40	C	1,086,296

**779/X-084**

Knife gate valve, short wafer type, VG model, DI body, SS-304 blade, EPDM packing, EPDM seal, handwheel/gearbox, 6-10 bar Ductile iron



AVK ref. no.	DN mm	Flange drilling	Deliv. code	Gross price ZAR
779X0050008	50	PN10	A	15,763
779X0080014	80	PN10	A	17,210
779X0100024	100	PN10	A	21,915
779X0150026	150	PN10	A	26,651
779X0200023	200	PN10	A	32,358
779X0250016	250	PN10	A	56,986
779X0300018	300	PN10	A	67,983
779X0350008	350	PN10	A	82,555
779X0400006	400	PN10	A	121,932

**779/61-002**

Knife gate valve, short wafer type, VG model, CF8M (SS-316) cast stainless steel body, SS-316 blade, EPDM packing, EPDM seal, handwheel/gearbox, 6-10 bar Stainless steel EPDM rubber



AVK ref. no.	DN mm	Flange drilling	Theoretical weight/kg	Deliv. code	Gross price ZAR
779-0050-61-0000007	50	PN10	10	C	52,777
779-0080-61-0000006	80	PN10	15	C	54,668
779-0100-61-0000008	100	PN10	18	C	61,379
779-0125-61-0000006	125	PN10	24	C	67,725
779-0150-61-9930111	150	PN10/16	26	C	76,999
779-0200-61-0000001	200	PN10	40	C	102,746
779-0250-61-0000008	250	PN10	75	C	164,126
779-0300-61-0000008	300	PN10	84	C	202,747
779-0350-61-0000006	350	PN10	108	C	257,293
779-0400-61-0000005	400	PN10	200	C	355,281
779-0450-61-0000006	450	PN10	228	C	425,019
779-0500-61-0000014	500	PN10	286	C	442,550

**779/65-001**

Heavy duty knife gate valve, long, WG model, flanged DI body, SS-304 blade, EPDM packing, EPDM seal, handwheel/gearbox, 6-10 bar Ductile iron EPDM rubber Epoxy Coating



AVK ref. no.	DN mm	Flange drilling	Theoretical weight/kg	Deliv. code	Gross price ZAR
779-0080-65-0000002	80	PN10/16	26	C	49,665
779-0100-65-0000002	100	PN10/16	33	C	57,353
779-0150-65-0000004	150	PN10/16	45	C	67,969
779-0200-65-0000005	200	PN10/16	70	C	94,937
779-0250-65-0000002	250	PN10	117	C	153,143
779-0300-65-0000003	300	PN10	180	C	184,931
779-0350-65-0000002	350	PN10	242	C	250,521
779-0400-65-0000001	400	PN10	292	C	301,711
779-0450-65-0000001	450	PN10	337	C	358,636

**779/68-001**

Knife gate valve, long, HG model, flanged DI body, SS-304 blade, PTFE packing, EPDM seal, handwheel/gearbox, class 150, 20 bar Ductile iron EPDM rubber Epoxy Coating



AVK ref. no.	DN mm	Flange drilling	Theoretical weight/kg	Deliv. code	Gross price ZAR
779-0100-68-0000001	100	ANSI 150	43	C	109,458
779-0150-68-0000001	150	ANSI 150	85	C	171,508
779-0200-68-0000002	200	ANSI 150	122	C	216,841
779-0250-68-0000001	250	ANSI 150	167	C	282,125
779-0300-68-0000001	300	ANSI 150	240	C	348,508
779-0400-68-0000001	400	ANSI 150	412	C	585,240
779-0450-68-0000001	450	ANSI 150	487	C	693,111

Options: Other pressure ratings

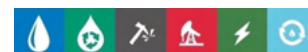

**779/91-001**

Knife gate valve, short wafer type CI body, SS-304 blade, PTFE packing, EPDM seal, handwheel/gearbox, 5-10 bar  
Ductile iron  
EPDM rubber  
Epoxy Coating



Options: Alternative materials, larger sizes, coatings, actuation and accessories available on request

AVK ref. no.	DN mm	PN Class	Flange drilling	Theoretical weight/kg	Deliv. code	Gross price ZAR
779-0050-91-0000001	50	PN10	PN10	7.0	A	11,388
779-0080-91-0000001	80	PN10	PN10	9.0	A	11,783
779-0100-91-0000001	100	PN10	PN10	11	A	11,629
779-0125-91-0000001	125	PN10	PN10	15	C	13,301
779-0150-91-0000001	150	PN10	PN10	18	A	16,193
779-0200-91-0000001	200	PN10	PN10	30	A	25,474
779-0250-91-0000001	250	PN10	PN10	44	A	31,651
779-0300-91-0000001	300	PN 6	PN10	58	A	40,756
779-0350-91-0000001	350	PN 6	PN10	96	A	66,746
779-0400-91-0000001	400	PN 6	PN10	124	A	84,782
779-0450-91-0000001	450	PN 5	PN10	168	C	97,072

**910/21-001**

Y-strainer with screen, plug  
and fasteners in SS-304  
Ductile iron  
EPDM high temperature  
Blue epoxy RAL 5017 250  
µm



AVK ref. no.	DN mm	Flange drilling	Theoretical weight/kg	Deliv. code	Gross price ZAR
910-0050-21-011020004	50	PN10/16	8.3	A	2,465
910-0080-21-011020004	80	PN10/16	14	A	3,520
910-0100-21-011020004	100	PN10/16	18	A	4,605
910-0150-21-011020004	150	PN10/16	35	A	8,549
910-0200-21-011020004	200	PN16	60	A	16,586
910-0250-21-011020004	250	PN16	97	C	26,025
910-0300-21-011020004	300	PN16	142	C	36,940
910-0300-21-311020004	300	PN10	142	C	36,500
910-0350-21-311020004	350	PN10	170	C	47,267
910-0400-21-011020004	400	PN16	227	C	62,527
910-0400-21-311020004	400	PN10	227	C	62,527
910-0450-21-011020004	450	PN16	290	C	76,794

**910/11-001**

Y-strainer with stainless steel  
screen  
Ductile iron  
EPDM rubber  
Blue epoxy RAL 5017 250  
µm



AVK ref. no.	DN mm	Flange drilling	Theoretical weight/kg	Deliv. code	Gross price ZAR
910-0050-11-111020004	50	PN25	9.1	C	2,752
910-0080-11-111020004	80	PN25	16	C	4,285
910-0100-11-111020004	100	PN25	22	C	5,576
910-0150-11-111020004	150	PN25	46	C	11,091
910-0200-11-111020004	200	PN25	84	C	22,030
910-0250-11-111020004	250	PN25	136	C	34,828
910-0300-11-111020004	300	PN25	198	C	48,422



MODEL

MU


**ORBINOX**  
 VALVE SOLUTIONS IN MORE THAN 70 COUNTRIES

## MU PENSTOCK SELECTION FORM

Customer: \_\_\_\_\_ Tag No.: \_\_\_\_\_ Date: \_\_\_\_\_  
 Order Number: \_\_\_\_\_ Qty.: \_\_\_\_\_

### DESIGN

Units: mm ☐ Size  
 inch ☐

Wall Opening Width: \_\_\_\_\_  
 Wall Opening Height: \_\_\_\_\_

Seating Water Head: \_\_\_\_\_

Unseating Water Head: \_\_\_\_\_

Invert to Operating Floor height: \_\_\_\_\_

- ☐ Non Rising Stem (NRS) ☐ UNI-DIRECTIONAL ☐ Closed Frame  
☐ Rising Stem (RS) ☐ BI-DIRECTIONAL ☐ Open Frame

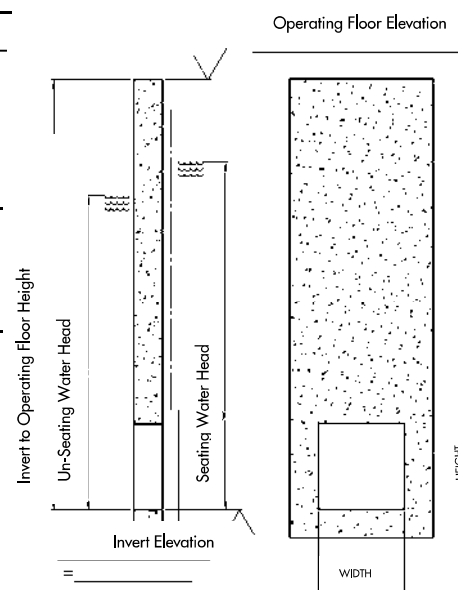
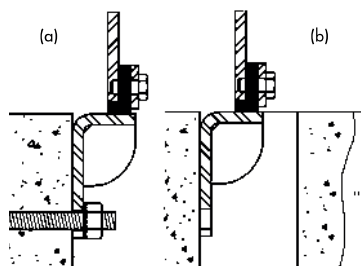
### PENSTOCK MOUNTING

- ☐ Concrete Wall Mount  
☐ Wall thimble Mount  
☐ Embedded In Concrete

#### Frame Invert Mounting:

- ☐ Standard Wall Mount (a)  
☐ Flush Bottom Mount (b)

→ E= \_\_\_\_\_ F= \_\_\_\_\_

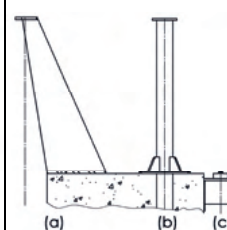


### ACTUATORS

- ☐ Handwheel  
☐ Crank (w/ B.Gear and Sqr. Nut)  
☐ Square Nut (NRS Only)  
☐ Bevel Gear  
☐ Electric Motor  
☐ Pneumatic Cylinder  
☐ Hydraulic Cylinder

#### Actuator Mounting:

- ☐ Inclined Floor Stand (a)  
☐ Straight Floor Stand (b)  
☐ Wall Bracket (for Sqr.Nut) (c)  
☐ Frame Mounted (d)



#### Position Indicator: (For RS Only)

- ☐ Position Label  
☐ Limit Switch  
☐ Proximity Switch

### MATERIALS

- |  |                                       |                                  |              |
|--|---------------------------------------|----------------------------------|--------------|
| <input type="checkbox"/> Frame & Slide | <input type="checkbox"/> 304L SS      | <input type="checkbox"/> 316L SS | Other: _____ |
| <input type="checkbox"/> Stem          | <input type="checkbox"/> 303 SS       | <input type="checkbox"/> 316 SS  | Other: _____ |
| <input type="checkbox"/> Extension     | <input type="checkbox"/> 304L SS      | <input type="checkbox"/> 316L SS | Other: _____ |
| <input type="checkbox"/> Floor Stand   | <input type="checkbox"/> Carbon Steel | <input type="checkbox"/> 304L SS | Other: _____ |
| <input type="checkbox"/> Seal          | <input type="checkbox"/> EPDM         |                                  | Other: _____ |
| <input type="checkbox"/> Stem Cover    | <input type="checkbox"/> Carbon Steel | <input type="checkbox"/> PVC     | Other: _____ |

### REMARKS

Name: \_\_\_\_\_ Signature: \_\_\_\_\_

# MODEL

# CC



## CC CHANNEL GATE SELECTION FORM

Customer: \_\_\_\_\_ Tag No.: \_\_\_\_\_ Date: \_\_\_\_\_  
 Order Number: \_\_\_\_\_ Qty.: \_\_\_\_\_

### CHANNEL GATE DESIGN (Size= Channel Width x Slide Height)

Units: mm ☐ inch ☐

Channel Width: \_\_\_\_\_ Channel Height: \_\_\_\_\_

Slide Height: \_\_\_\_\_ Slide Travel: \_\_\_\_\_

Seating Water Head: \_\_\_\_\_

Unseating Water Head: \_\_\_\_\_

☐ Non Rising Stem (NRS) ☐ Uni-Directional

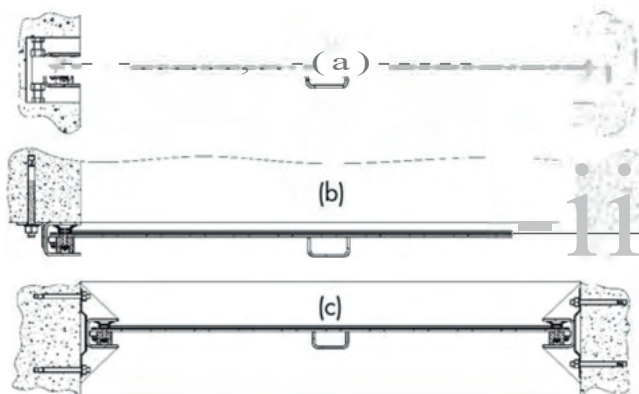
☐ Rising Stem (RS) ☐ Bi-Directional

### CHANNEL GATE MOUNTING

☐ Embedded in Concrete (a)

☐ Wall Mounted (b)

☐ Face Mounted In Existing Channel (c)

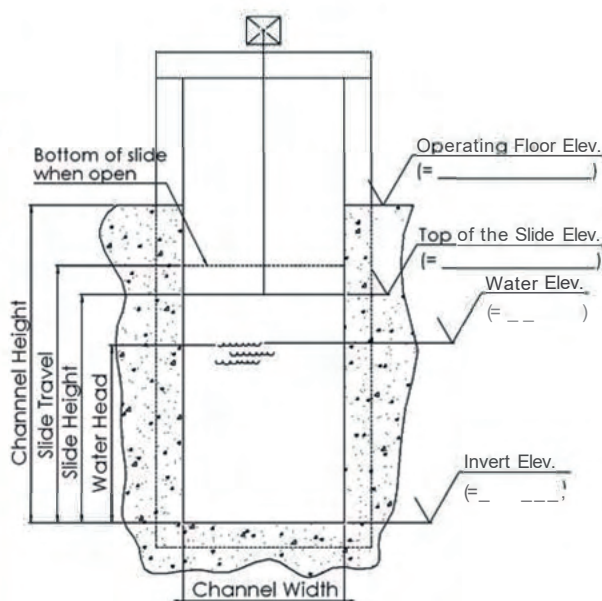


### Frame Invert Mounting:

☐ Embedded in Concrete

☐ Face Mounted In Existing Channel

☐ Wall Mounted



### ACTUATORS

☐ Handwheel

☐ Crank (w/ B.Gear and Sq. Nu

☐ Square Nut- ISO5211 (NRS Only)

☐ Bevel Gear

☐ Electric Motor

☐ Pneumatic Cylinder

☐ Hydraulic Cylinder

### Position Indicator:

(For RS Only)

☐ Position Label

☐ Limit Switch

☐ Proximity Switch

### MATERIALS

☐ Frame & Slide ☐ 304L SS ☐ 316L SS Other: \_\_\_\_\_

☐ Stem ☐ 303 SS ☐ 316 SS Other: \_\_\_\_\_

☐ Extension ☐ 304L SS ☐ 316L SS Other: \_\_\_\_\_

☐ Floor Stand ☐ Carbon Steel ☐ 304L SS Other: \_\_\_\_\_

☐ Seal ☐ EPDM Other: \_\_\_\_\_

☐ Stem Cover ☐ Carbon Steel ☐ PVC Other: \_\_\_\_\_

### REMARKS

Name: \_\_\_\_\_

Signature: \_\_\_\_\_

**MODEL****SL**

## SL STOP LOG SELECTION FORM

Customer: \_\_\_\_\_ Tag No.: \_\_\_\_\_ Date: \_\_\_\_\_

Order Number: \_\_\_\_\_ Qty.: \_\_\_\_\_

**STOP LOG DESIGN (Size= Channel Width x Slide Height)**

Units: mm ☐ inch ☐

Channel Width: \_\_\_\_\_ Channel Height: \_\_\_\_\_

Total Logs Height: (=Number of Logs x Log Height) \_\_\_\_\_

Number of Logs: \_\_\_\_\_

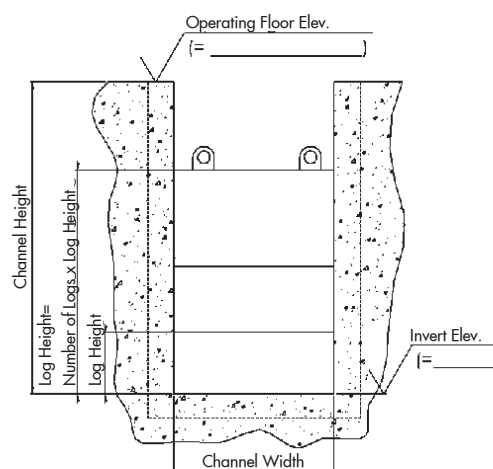
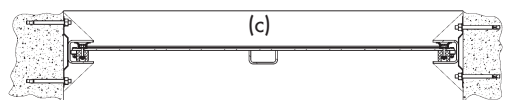
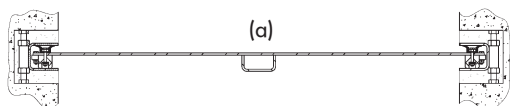
Height of each log: \_\_\_\_\_

Max. Seating Water Head: \_\_\_\_\_

Max. Unseating Water Head: \_\_\_\_\_

**STOP GATE MOUNTING**
☐ Embedded in Concrete (a)

☐ Wall Mounted (b)

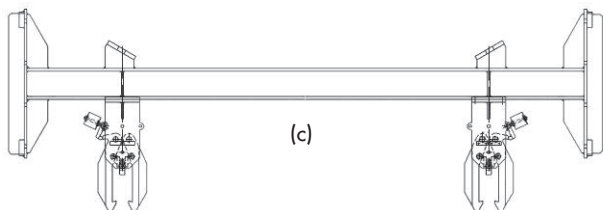
☐ Face Mounted In Existing Channel (c)

**Frame Invert Mounting:**
☐ Embedded in Concrete

☐ Wall Mounted

☐ Face Mounted In Existing Channel

**LIFTING MECHANISM**
☐ Hand pull

☐ Prepared for external crane

☐ Lifting device (c)

**MATERIALS**

Frame&Slide: ☐ 304L SS ☐ 316L SS ☐ Other:

Seal: ☐ EPDM ☐ Other:

**REMARKS**

Name: \_\_\_\_\_

Signature: \_\_\_\_\_

**MODEL****SA**

## SA ALUMINUM STOP LOG SELECTION FORM

Customer: \_\_\_\_\_ Tag No.: \_\_\_\_\_ Date: \_\_\_\_\_

Order Number: \_\_\_\_\_ Qty.: \_\_\_\_\_

### ALUMINUM STOP LOG DESIGN

**(Size = Channel Width x Logs Height)**

Units: mm ☐ inch ☐

Channel Width: \_\_\_\_\_ Channel Height: \_\_\_\_\_

Number of Logs: \_\_\_\_\_

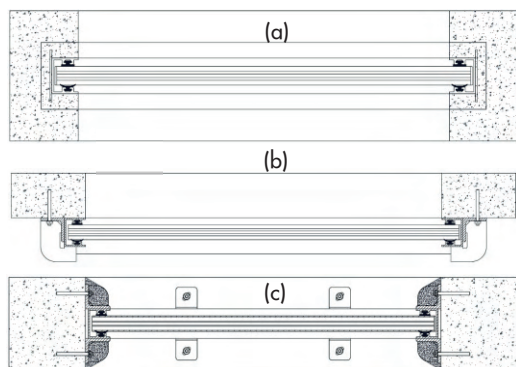
Note that the logs are made of extruded aluminum profiles. ORBINOX range includes a total of 4 log types, which have different heights and pressure ratings (Refer to the catalogue). ORBINOX will choose the most appropriate log type for each application.

Max. Seating Water Head (mWC): \_\_\_\_\_

Max. Unseating Water Head (mWC): \_\_\_\_\_

### ALUMINUM STOP LOG MOUNTING

- ☐ Embedded in Concrete (a)  
☐ Wall Mounted (b)  
☐ Face Mounted In Existing Channel (c)

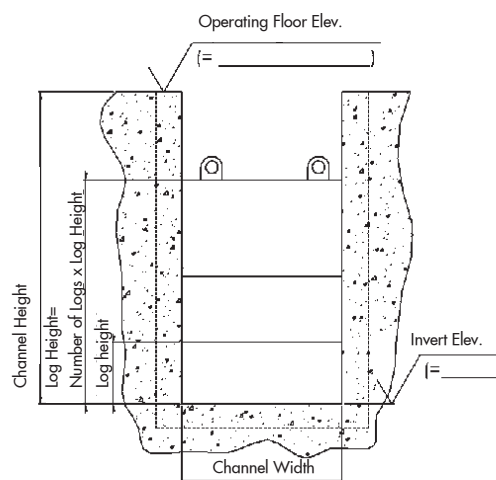


#### Frame Invert Mounting:

- ☐ Embedded in Concrete  
☐ Wall Mounted  
☐ Face Mounted In Existing Channel

### LIFTING MECHANISM

- ☐ Hand pole  
☐ Lifting device



### MATERIALS

Frame ☐ Aluminum 6063-T6  
           ☐ 304 SS  
           ☐ 316 SS

Log ☐ Aluminum 6063-T6

Seal ☐ EPDM      Other: \_\_\_\_\_

### REMARKS

Name: \_\_\_\_\_

Signature: \_\_\_\_\_



**MODEL****RB**
**ORBINOX**  
 VALVE SOLUTIONS IN MORE THAN 70 COUNTRIES

## RB WEIR GATE SELECTION FORM

Customer: \_\_\_\_\_ Tag No.: \_\_\_\_\_ Date: \_\_\_\_\_  
 Order Number: \_\_\_\_\_ Qty.: \_\_\_\_\_

### WEIR GATE DESIGN (Size= Channel Width x Slide Height)

Units: mm ☐ ☐ 3 Side Sealing  
 inch ☐ ☐ 4 Side Sealing

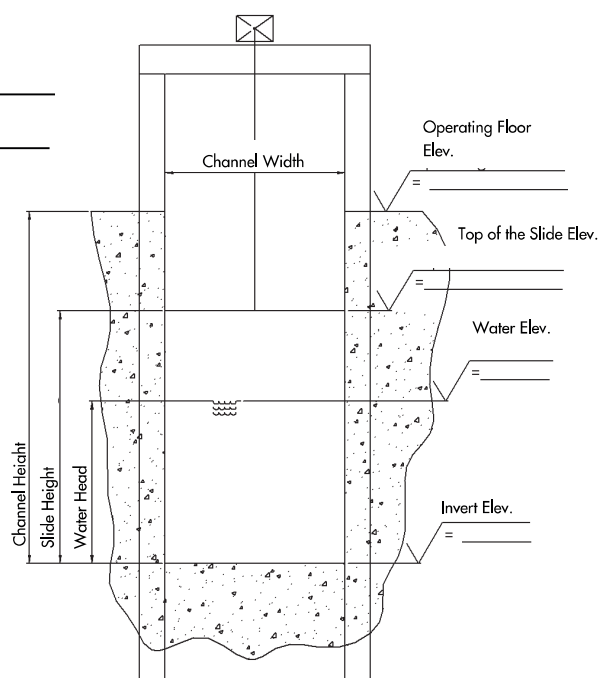
Channel Width: \_\_\_\_\_ Channel Height: \_\_\_\_\_

Slide Height: \_\_\_\_\_

Slide Travel: \_\_\_\_\_

Seating Water Head: \_\_\_\_\_

Unseating Water Head: \_\_\_\_\_



### FRAME AND STEM CONFIGURATION

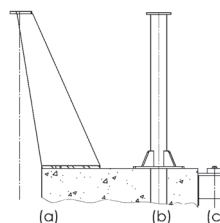
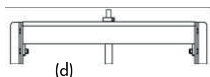
- ☐ Non Rising Stem (NRS)  
☐ Rising Stem (RS)  
☐ Open Frame + Extension  
☐ Closed frame + Extension  
☐ Closed Frame (with extended frame)

### ACTUATORS

- ☐ Handwheel  
☐ Crank (w/ B.Gear and Sqr. Nut)  
☐ Square Nut ISO 5211 (NRS Only)  
☐ Bevel Gear  
☐ Electric Motor  
☐ Pneumatic Cylinder  
☐ Hydraulic Cylinder

### Actuator Mounting:

- ☐ Inclined Floor Stand (a)  
☐ Straight Floor Stand (b)  
☐ Wall Bracket (for Sqr.Nut) (c)  
☐ Frame Mounted (d)



### Position Indicator: (For RS Only)

- ☐ Mylar Tape  
☐ Limit Switch  
☐ Proximity Switch

### MATERIALS

Frame & Slide	<input type="checkbox"/> 304L SS	<input type="checkbox"/> 316L SS	Other: _____
Stem	<input type="checkbox"/> 303 SS	<input type="checkbox"/> 316 SS	Other: _____
Extension	<input type="checkbox"/> 304L SS	<input type="checkbox"/> 316L SS	Other: _____
Floor Stand	<input type="checkbox"/> Carbon Steel	<input type="checkbox"/> 304L SS	Other: _____
Seal	<input type="checkbox"/> EPDM		Other: _____
Stem Cover	<input type="checkbox"/> Carbon Steel	<input type="checkbox"/> Plexiglas	

### REMARKS

Name: \_\_\_\_\_

Signature: \_\_\_\_\_

**MODEL****AG**
**ORBINOX**  
 VALVE SOLUTIONS IN MORE THAN 70 COUNTRIES

## AG STOP GATE SELECTION FORM

Customer: \_\_\_\_\_ Tag No.: \_\_\_\_\_ Date: \_\_\_\_\_

Order Number: \_\_\_\_\_ Qty.: \_\_\_\_\_

**DESIGN (Size= Channel Width x Slide Height)**

 Units: mm ☐ inch ☐

Channel Width \_\_\_\_\_ Channel Height \_\_\_\_\_

Slide Height \_\_\_\_\_

Seating Water Head: \_\_\_\_\_

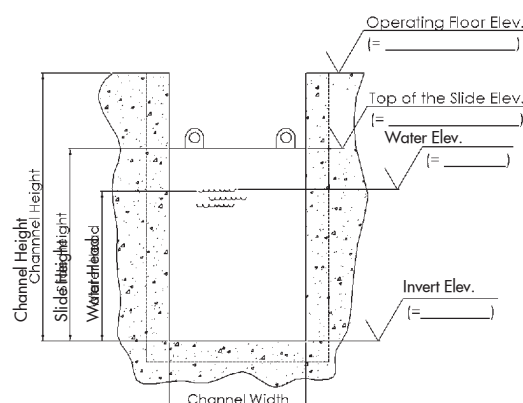
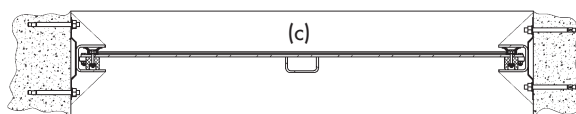
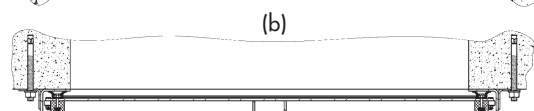
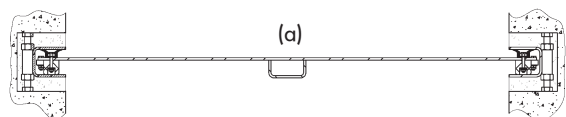
Unseating Water Head: \_\_\_\_\_

☐ Uni-Directional

☐ Bi-Directional

**STOP GATE MOUNTING**
☐ Embedded in Concrete (a)

☐ Wall Mounted (b)

☐ Face Mounted in Existing Channel (c)


- Slide Height = Top of the Slide - Invert Level  
(As standard: Slide Height = Water Head + 6" (150mm))
- Channel Height = Operating Floor Level - Invert Level
- Water Head = Water Level - Invert Level

Channel Height=Operating Floor Level-Invert Level  
Water Head= Water Level -Invert Level

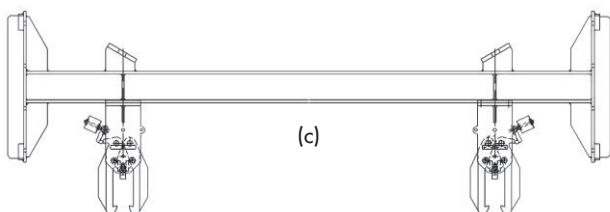
**Frame Invert Mounting:**
☐ Embedded in Concrete

☐ Face Mounted in Existing Channel

☐ Wall Mounted

**LIFTING MECHANISM**
☐ Hand pull

☐ Prepared for external crane

☐ Lifting device (c)

**MATERIALS**

 Frame&Slide: ☐ 304L SS ☐ 316L SS Other: \_\_\_\_\_

 Seal: ☐ EPDM ☐ \_\_\_\_\_ Other: \_\_\_\_\_

**REMARKS:**

Name: \_\_\_\_\_

Signature: \_\_\_\_\_

**MODEL**

**CT**



## TAINTOR GATE SPECIFICATIONS

### OPERATING CONDITIONS

Gate application: \_\_\_\_\_

Type of gate: \_\_\_\_\_

Spillway (sealed on 3 sides)

- Maximum overspill: \_\_\_\_\_ mm

Bottom outlet (sealed on 4 sides)

- Maximum operating pressure: \_\_\_\_\_ mwc
- Design Pressure: \_\_\_\_\_ mwc

### CHARACTERISTICS

Size of the opening \_\_\_\_\_ mm x \_\_\_\_\_ mm

Actuator: \_\_\_\_\_

Hydraulic:

- Hydraulic Unit ☐
- Electrical Cabinet ( \_\_\_\_ V/ \_\_\_\_ Hz) ☐

Observations: \_\_\_\_\_

### TESTS

NDT \_\_\_\_\_

Welding approval: ASME IX ☐

Other: \_\_\_\_\_ ☐

### OBSERVATIONS

---

---

---

---

**MODEL****RC/RR****RR AND RC FLAP GATE SELECTION FORM**

Customer: \_\_\_\_\_ Tag No.: \_\_\_\_\_ Date: \_\_\_\_\_  
Order Number: \_\_\_\_\_ Qty.: \_\_\_\_\_

**FLAP GATE DESIGN**Units: mm ☐ inch ☐☐ RR: Round Flap Gate

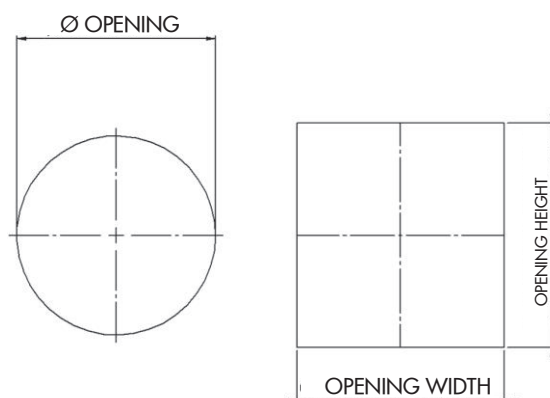
Opening diameter: \_\_\_\_\_

☐ RC: Square Flap Gate

Opening Width: \_\_\_\_\_

Opening Height: \_\_\_\_\_

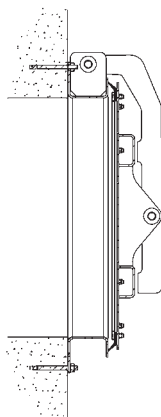
Seating Water Head: \_\_\_\_\_

**MOUNTING OPTIONS**

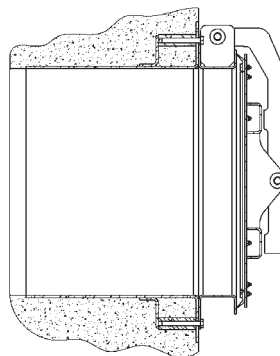
- ☐ Wall Mounted (a)  
☐ Wall Thimble Mounted (b)  
☐ Std. Flange Mounted (c)

→ Flange Type: \_\_\_\_\_

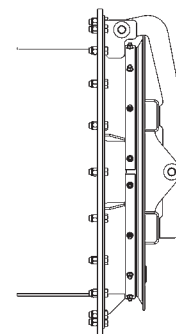
Other:



(a)



(b)



(c)

**MATERIALS**

Frame & Flap ☐ 304L SS ☐ 316L SS Other: \_\_\_\_\_  
Seal ☐ EPDM ☐ Other: \_\_\_\_\_

**REMARKS**

Name: \_\_\_\_\_

Signature: \_\_\_\_\_

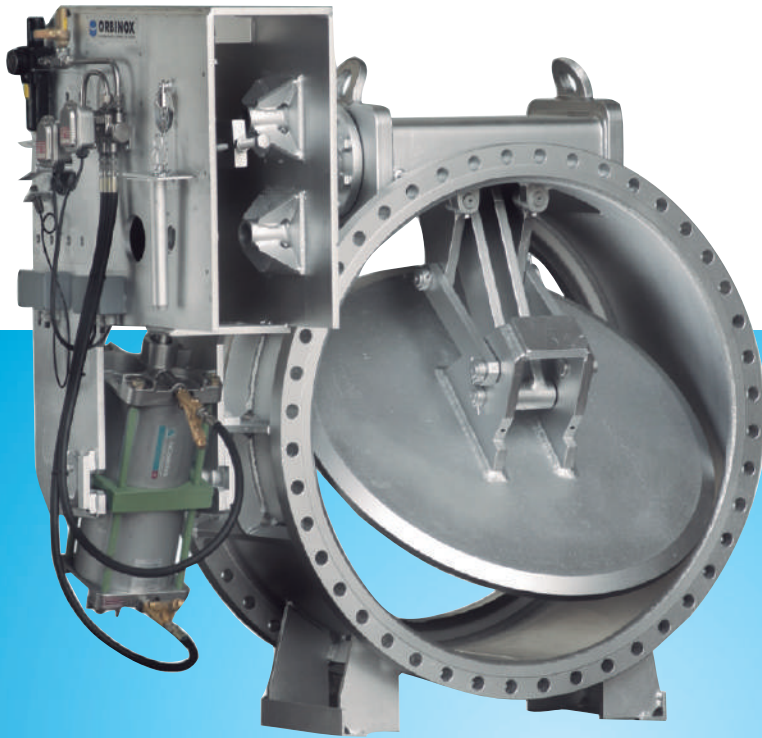




# SPECIAL ENGINEERED VALVES AND DAMPERS

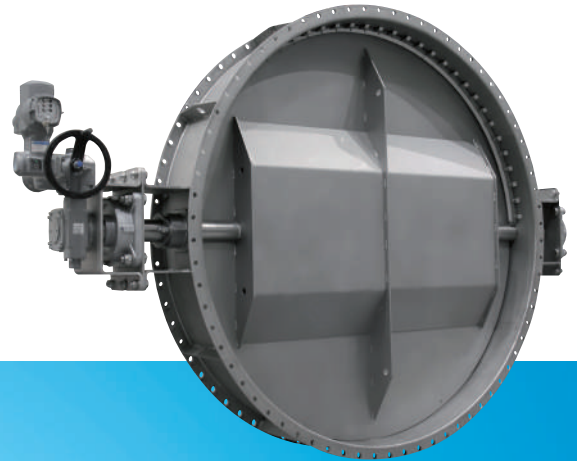
**MP**

Three Lever Valve



**ML**

Butterfly Damper



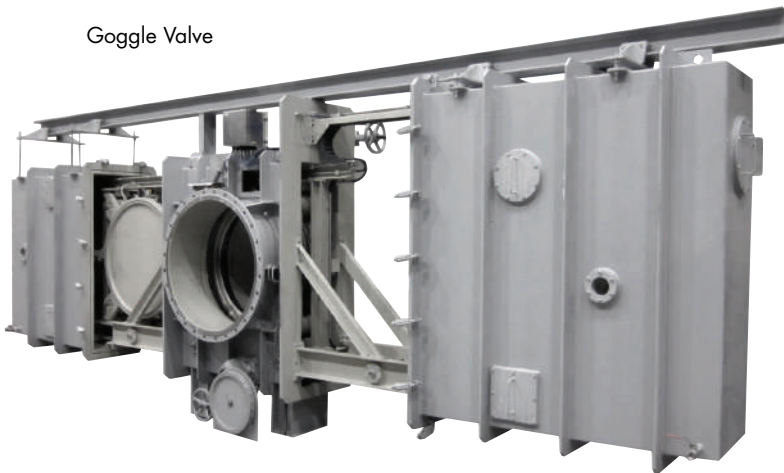
**PE**

Louver Damper



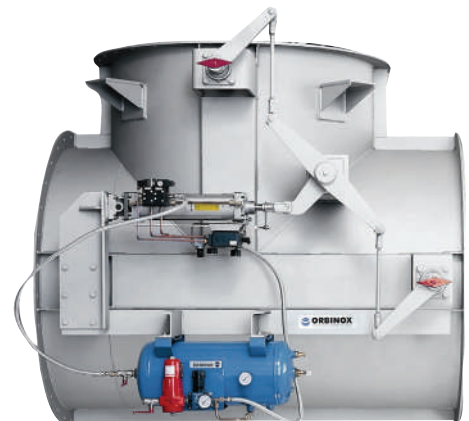
**GP**

Goggle Valve



**DI**

Multiple Diverter Damper



Required data to quote

QUANTITY	
----------	--

ITEM	

### TYPE OF DAMPER

- ☐ Butterfly damper (ML)      Nominal diameter

☐ T-duct damper (DI)      Nominal diameter

☐ Louvre damper (PE)      Width       Height       N. blades

**STANDARD FOR FLANGES:**

- ☐ ORBINOX standard ☐ PN10
- ☐ PN2.5 ☐ Other

## OPERATING POSITION

- ☐ Horizontal shafts (standard)
- ☐ Vertical shafts

## SEALING EFFICIENCY

- 99% CSA ⇒ Rigid ledge
- 99,5% CSA ⇒ Flexible ledge (ALLOY-625)
- 100% CSA ⇒ Seal air fan system between two parallel blades (ML2 / DI3) - Maximum design pressure is 25 mbar

## CONDITIONS

- Type of fluid:

- Temperature (max. 600 °C):      Design       Operating

- Pressure (max. 100 mbar):      Design       Operating

- Flow       Speed (max. 30 m/s)

## MATERIALS

- | Max. Temp.                      | Material  |
|---------------------------------|---|
| <input type="checkbox"/> 400 °C | S275JR (Body and blades in S275JR / Shafts in AISI-304)       |
| <input type="checkbox"/> 550 °C | 16Mo3 (Body and blades in 16Mo3 / Shafts in AISI-304)         |
| <input type="checkbox"/> 550 °C | AISI 304L (Body and blades in AISI-304L / Shafts in AISI-304) |
| <input type="checkbox"/> 550 °C | AISI 316L (Body and blades in AISI-316L / Shafts in AISI-316) |
| <input type="checkbox"/> 600 °C | AISI 321 (Body and blades in AISI-321 / Shafts in AISI-321)   |
| <input type="checkbox"/> Other  |   |

## ACTUATORS

SERVICE: ☐ ON / OFF ☐ Regulating

- ☐ **Bare shaft.**
  - ☐ **Manual - 1/4 turn InterApp gear box with handwheel**
  - ☐ **1/4 turn pneumatic actuator - SINGLE ACTING:**
    - ☐ Limit switches. Type:
    - ☐ Position transmitter (4-20 mA)
  - ☐ **1/4 turn pneumatic actuator - DOUBLE ACTING:**
    - ☐ Limit switches. Type:
    - ☐ Position transmitter (4-20 mA)
  - ☐ **Linear pneumatic actuator - DOUBLE ACTING:**
    - ☐ Limit switches. Type:
    - ☐ Position transmitter (4-20 mA)
    - ☐ Air tank      Air failure position: ☐ Open      ☐ Close  
Electric failure position: ☐ Open      ☐ Close
  - ☐ **Electric actuator:**
    - ☐ Position transmitter (4-20 mA)
    - ☐ Control box

**6127/01-001**

Cementation plug/cock valve,  
high pressure, 3/4" bore (20  
mm), 1" x 1" female BSP,  
grey  
Steel



Locally manufactured

AVK ref. no.

Deliv.  
code

Gross price  
ZAR

6127-01-01-99-K-00

A

8,090

**6127/02-001**

Cementation plug/cock valve,  
high pressure, 3/4" bore (20  
mm), 3/4" x 1" female BSP,  
grey  
Steel



Locally manufactured

AVK ref. no.

Deliv.  
code

Gross price  
ZAR

6127-02-01-99-K-00

A

7,537

**6127/03-001**

Cementation plug/cock valve,  
high pressure, 1" bore (25  
mm), 1.5" x 1.5" - female  
BSP, grey  
Steel



Locally manufactured

AVK ref. no.

Deliv.  
code

Gross price  
ZAR

6127-03-01-99-K-00

A

9,973

**6127/04-001**

Cementation plug/cock valve,  
high pressure, 3/4" bore (20  
mm), 2" hub for hub clamp,  
grey  
Steel



Locally manufactured

AVK ref. no.

Deliv.  
code

Gross price  
ZAR

6127-04-01-25-K-00

A

9,966

**6127/05-001**

Cementation plug/cock valve,  
high pressure, 1" bore (25  
mm), 2" hub for hub clamp,  
grey  
Steel



Locally manufactured

AVK ref. no.

Deliv.  
code

Gross price  
ZAR

6127-05-01-25-K-00

A

13,024

**6127/06-001**

Cementation plug/cock valve,  
high pressure, 1 1/2" bore (40  
mm), 2" hub for hub clamp,  
yellow  
Steel



Locally manufactured

AVK ref. no.

Deliv.  
code

Gross price  
ZAR

6127-06-01-25-M-00

A

18,274


**6127/07-001**

Cementation plug/cock valve,  
high pressure, 2" bore (55  
mm), 2" x 2½" female/male  
BSP, red  
Steel

Locally manufactured



AVK ref. no.

Deliv.  
code

Gross price  
ZAR

6127-07-02-99-L-00

A

21,477

**6127/08-001**

Cementation plug/cock valve,  
high pressure, 2" bore (46  
mm), 2" female BSP, yellow  
Steel

Locally manufactured



AVK ref. no.

Deliv.  
code

Gross price  
ZAR

6127-08-02-99-M-00

A

20,101

**6127/09-001**

Cementation plug/cock valve,  
high pressure, 2" bore (42  
mm), OD235mm / ASA600  
connection, white  
Steel

F/F 260 mm.

Locally manufactured



AVK ref. no.

Deliv.  
code

Gross price  
ZAR

6127-09-02-20-N-00

A

22,684

**6127/11-001**

Cementation plug/cock valve,  
high pressure, 2½" bore  
(63.5 mm), 3" female BSP,  
grey  
Steel

Locally manufactured



AVK ref. no.

Deliv.  
code

Gross price  
ZAR

6127-11-03-99-K-00

A

39,093

**6127/12-001**

Cementation plug/cock valve,  
high pressure, 3" bore (77  
mm), 3" thread female/male  
BSP, grey  
Steel

Also available in 80 mm bore  
(blue colour)

Locally manufactured



AVK ref. no.

Deliv.  
code

Gross price  
ZAR

6127-12-03-99-K-00

A

38,034



**6127/15-001**

Cementation plug/cock valve,  
high pressure, 3" bore (80  
mm), 3" x 4" female/male  
BSP, blue

Locally manufactured



AVK ref. no.

6127-15-03-99-0-00

Deliv.  
code

A

Gross price  
ZAR

39,906

**6127/16-001**

Cementation plug/cock valve,  
high pressure, 2" bore (55  
mm), 2" x 2½" female/male  
BSP, red

Locally manufactured



AVK ref. no.

6127-16-02-99-L-00

Deliv.  
code

C

Gross price  
ZAR

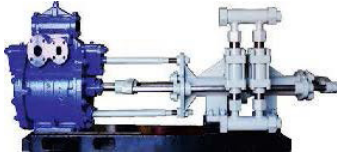
21,717

# GROUTER / CEMENTATION PUMP

## CEM - MK V HP

Grouter and Cementation pump  
Pneumatic & 14",  
Air end with Base

Ram stroke: 300mm  
Ideal speed: 60 Cycles/min  
Air inlet pressure: 552 Kpa (80psi)  
Approx volumetric efficiency: 80%  
Approx pump weight: 1200kg  
Options  
Hydraulic



Description	AVK ref. no.	Delivery Code	Gross price ZAR
Cementation MKV Pump c/w 1½ Ram & 14" Air End	970408009900242	C	843,937
Cementation MKV Pump c/w 2 Ram & 14" Air End	970408009900240	C	843,937
Cementation MKV Pump c/w 2½ Ram & 14" Air End	970408009900182	C	896,600
Cemp Pump Air End - Complete	970408009900165	C	355,714
Cementation Double Drum Mixer	970508009900011	C	405,554
Complete Pilot Safety Waterboard Assembly	970508009900016	B	153,716

# CEMENTATION ACCESSORIES



Description (Spares)	AVK ref. no.	Delivery Code	Gross price ZAR
25 mm HP Union BSP	970408009900003	A	1,307
Telescopic Pipe 0,6 x 73 x 50	970408009900033	B	2,318
Telescopic Pipe 0,9 x 73 x 50	970408009900035	B	2,729
Telescopic Pipe 1,2 x 73 x 50	970408009900036	B	3,313
Telescopic Pipe 1,8 x 73 x 50	970408009900038	B	4,559
Telescopic Pipe 0,6 x 46 x 19	970408009900029	B	1,384
Telescopic Pipe 1,2 x 46 x 19	970408009900031	B	1,880
Telescopic Pipe 1,8 x 46 x 19	970408009900032	B	2,820
Telescopic Pipe 0,6 x 35 x 19	970408009900024	B	1,313
Telescopic Pipe 1,2 x 35 x 19	970408009900027	B	1,938
Telescopic Pipe 1,8 x 35 x 19	970408009900028	B	2,299

**29/387-001**

Underground fire hydrant,  
Bayonet outlet, CTO, red  
stemcap, SABS approved,  
bayonet cover, PN10/16-  
tbl.D/E, design to BS750  
Ductile iron  
EPDM seals, WRAS approved  
Clockwise to Close, Stem  
Cap/White Insert

Locally manufactured



AVK ref. no.	DN mm	PN Class	Theoretical weight/kg	Deliv. code	Gross price ZAR
29-387-8-31100032	80	PN16	13	C	4,610

**29/387-003**

Underground fire hydrant,  
London V-thread outlet, CTO,  
red stemcap, SABS approved,  
PN10/16-tbl.D/E, design to  
BS750  
Ductile iron  
EPDM seals, WRAS approved  
Clockwise to Close, Stem  
Cap/White Insert

Locally manufactured



AVK ref. no.	DN mm	PN Class	Theoretical weight/kg	Deliv. code	Gross price ZAR
29-387-8-3114003	80	PN16	13	C	7,152

**29/387-004**

Underground fire hydrant,  
London round outlet, CTO,  
red stemcap, SABS  
Approved, PN10/16, design  
to BS750  
Ductile iron  
EPDM seals, WRAS approved  
Epoxy coated according to  
WIS 4-52-01 class B  
Clockwise to Close, Stem  
Cap/White Insert

Locally manufactured



AVK ref. no.	Theoretical weight/kg	Deliv. code	Gross price ZAR
29-387-8311A003	13	A	5,158

# F/F DIMENSIONS OF VALVES

<b>DN</b>	<b>SANS664</b> Short Pattern Face-to-Face	<b>SANS665</b> Short Pattern Face-to-Face	<b>EN 558</b> Basic Series 1	<b>EN 558</b> Basic Series 3	<b>EN 558</b> Basic Series 13	<b>EN 558</b> Basic Series 14	<b>EN 558</b> Basic Series 15	<b>EN 558</b> Basic Series 16	<b>EN 558</b> Basic Series 19	<b>EN 558</b> Basic Series 20	<b>EN 558</b> Basic Series 48
<b>50</b>	216	178	230	178	108	150	250	43	216	43	200
<b>65</b>			290	190	112	170	270	46	241	46	240
<b>80</b>	229	203	310	203	114	180	280	64	283	46	260
<b>100</b>	254	229	350	229	127	190	300	64	305	52	300
<b>150</b>	280	267	480	267	140	210	350	76	403	56	400
<b>200</b>	317	292	600	292	152	230	400	89	419	60	500
<b>250</b>	356	330	730	330	165	250	450	114	457	68	600
<b>300</b>	380	356	850	356	178	270	500	114	502	78	700
<b>350</b>	470	381	980	381	190	290	550	127	572	78	800
<b>400</b>	470	406	1100	406	216	310	600	140	610	102	900
<b>450</b>	485	432	1200	432	222	330	650	152	660	114	1000
<b>500</b>	510	457	1250	457	229	350	700	152	711	127	1100
<b>600</b>	600	508	1450	508	267	390	800	178	787	154	1300
<b>700</b>	610	610	1650	610	292	430	900	229		165	1500
<b>800</b>	660	660	1850	660	318	470	1000	241		190	1700
<b>900</b>	711	711	2050	711	330	510	1100	241		203	1900
<b>1000</b>	811	811	2250	813	410	550	1200	300		216	2100



# TERMS AND CONDITIONS OF SALE AND DELIVERY

These Terms and Conditions pertain to AVK Holding Southern Africa (Pty) Ltd that consists of the following companies/business units:

**AVK Valves Southern Africa (Pty) Ltd**  
**AVK Industrial (Pty) Ltd**  
**Premier Valves Mining (Pty) Ltd**

Hereby referred to as the organization.

## ACCEPTANCE

Except where specifically agreed to the contrary in writing by the organization, orders resulting from the organization written quotations and price lists are subject to the terms and conditions embodied herein.

The organization do not accept any form of penalties in any form whatsoever.

## TESTS

The goods will be tested in accordance with the specifications of the organization tender and/or the relevant standard specifications as stated therein.

## AVAILABILITY

Offers for equipment available ex-stock are subject to such stock remaining unsold at time of order placement.

## DELIVERY DESTINATION

Delivery periods quoted are based on the manufacturing position as at the time of quotation. Delivery periods is an estimate and is subject to review at time of order placement.

Delivery periods quoted for all custom designed items or items subject to client drawing, QCP (Quality Control Plan) or Databook approval will only commence once final approval is received from the client in writing.

Whilst every endeavour will be made to maintain such deliveries, no liability shall be accepted by the organization for delay due to causes beyond its control.

The organization shall only accept liability for late delivery where the organization, liability

for such late delivery is not excluded in terms of the foregoing and where The organization has specifically agreed in writing to the payment of a penalty or liquidated damages or damages for such late delivery, in which case The organization liability shall be limited to the amount so agreed by a duly authorised manager of the organization.

All goods quoted are done ex-works JHB or CPT warehouse unless prior arrangements have been made.  
Outline areas will be quoted accordingly.

Allow 24 hours for picking and packing of orders.

All delivery periods as quoted, exclude December shutdowns, European Summer Holidays and Chinese New Year holidays where applicable.

The organization will deliver, where provided for, to a destination named in its quotation at which point the organization's responsibility for the goods will be limited to the standard conditions of sales and deliveries.

## ESCALATION

Where the sum of the quotation validity period and delivery period is more than 90 (ninety) days, prices for goods or services quoted by the organization are subject to escalation in accordance with the relevant SEIFSA indices for material, labour and transport.

## PACKING

Where the organization deems goods vulnerable to damage during transit, the organization reserves the right to pack such goods in suitable protective packaging or crates.

Costs for packing will be quoted and agreed to beforehand and will be substantiated by a copy of relevant documentation from the packaging contractor.

## PRICE BASIS

Prices shall be referenced from the organization valid List Price or from the organization written

quotations.

Prices can increase due to insufficient information where more detailed information is need for accurate pricing.

Prices, where applicable, are subject to fluctuation in the exchange rate and are for the purchasers account. (Indicate Exchange rate used on your quotation).

We reserve the right to review our prices against partial orders.

*Continued on next page*

# TERMS AND CONDITIONS OF SALE AND DELIVERY

## PAYMENT TERMS

Payment terms are cash in advance or COD. Alternatively, credit terms can be applied for by completing a credit application form.

Credit checks will be performed, and a credit limit will be granted, subject to the credit limit granted by Credit Guarantee Insurance Corporation of Africa Limited, as the credit insurer of the organization. Standard terms of payment for all goods and services received from the organization are payment within 30 (THIRTY) days of statement. Thereafter interest will be charged at 2.5% per month on all overdue amounts.

Where the organization has quoted delivery point as ex-works, delivery shall be deemed to have been completed when the goods are ready for collection, at which time, the Purchaser shall be advised, and an invoice will be generated.

Payment for ex-works goods shall be due within the requisite period in accordance with the organization payment terms, starting from the date on valid order completion advice was issued to the Purchaser. Failure or delay by the Purchaser to effect collection of completed goods shall not relieve the Purchaser from the contractual obligation to remit payment within 30 days from statement date.

The Purchaser undertakes to refund to The organization any extra costs incurred by The organization as a result of the Purchaser's instruction or lack of instructions and for the purpose of this paragraph extra cost shall mean any amount which The organization becomes liable to pay, whether in wages, for materials or otherwise howsoever in respect of the work which The organization would not have been liable to pay but for the Purchaser's action or default. In the event of dispute on the amount of the extra cost, the decision of a mutually agreed upon arbitrator, shall be final and binding.

## DISCOUNT

Trade discounts will be negotiated on a contract, tender or quotation basis.

A 2.5% settlement discount can only be allowed if agreed upon in writing and approved by the Financial Manager and where full and final settlement is received within 30 (thirty) days from date of statement.

The organization statement/invoice reflects the date by which payment must be received to qualify for discount, therefore late receipt or non-receipt of statements will not constitute acceptable reason for payment delays. Late payments which reflect arbitrary discount deductions will be received without prejudice to the organization, right to full and final payment.

## TITLE

Ownership of all goods supplied by The organization will not pass to the purchaser or any other party until paid for in full and until such time, The organization shall be entitled to re-possess the goods whether affixed to immovable property or not. All such goods shall be deemed to be removable property and severable from immovable property.

## QUOTATION VALIDITY

Written quotations will be held valid for a maximum of 30 (thirty) days unless contradicted in writing by the organization.

Prices are quoted by the organization in good faith based on the ruling costs of material, labour, transport and, if applicable, insurance, sureties and retention monies, as well as statutory government taxes, levies, duties and surcharges.

Severely adverse changes and/or additions to any of these costs components which are contributory in the calculation of a price or prices quoted by the Company' will be for the purchasers account.

## CANCELLATION

Order cancellation or variation will not be considered without the written consent of the organization and in the case of equipment being or having been manufactured specifically for an order, the purchaser will be

liable to pay a portion of the price per the stage of completion of the equipment ordered, plus a 10% cancellation fee.

## RETURNS FOR CREDIT

AVK Southern Africa categorize the product into three types:

- A - Stocked Product
- B - Assembled from Stocked Components
- C - Made-To-Order / Engineered to Order

### A - Classed Product

Stocked Product may be **returned within one year of purchase date for a 50% refund in the form of a credit to the account**, providing the product has been stored correctly to maintain it in an 'as new' resaleable condition. Photographic evidence of the product condition will be required prior to any return's agreement. The product, according to our procedures, will be fully retested to ensure its suitability for resale. The cost of the packaging and transportation is the responsibility of the **customer**.

### B & C Classed Product

Products are made specifically to the customer's orders and can often be specialised or of very infrequent use, therefore, once accepted and production has commenced, orders **cannot be cancelled** and delivered items **cannot be returned**. In occasional circumstances, AVK may be able to assist in finding a suitable alternative market. Where this is possible, a refund of a percentage of the purchase price will be agreed based on the commercial value of the product in question at the time of resale and taking into account any work that may be involved in making it ready for sale (e.g. inspection and testing).

The return of any product assumes that the product is compliant with market specifications at the time of return rather than the time of purchase. If the product requires any refurbishment, the cost of this will be deducted from the above percentage offered. If returned, the cost of the packaging and transportation is the **responsibility of the customer**.

# TERMS AND CONDITIONS OF SALE AND DELIVERY

## GUARANTEE

The organization guarantees that the goods supplied will conform to specification and to any requirements specifically accepted by The organization in writing regarding each order but, except as aforesaid The organization gives no warranty, express or implied, of material workmanship or fitness of goods for any purpose whether such purpose be known to us or not.

In the event of the goods proving to not be in accordance with the specifications or requirements aforesaid, or should defects under proper use, appear in the goods within a period of 12 (TWELVE) calendar months after the goods have been delivered, caused solely by faulty design, materials or workmanship, we shall, if requested to do so within a reasonable time, but not later than 18 (EIGHTEEN) calendar months from date of delivery repair such goods, or at our option replace goods or the defective parts thereof, free of charge by supplying other goods or replacement parts at the initial place of delivery which do comply with the specifications or requirements aforesaid and/or which are free of the defects complained of.

## IT IS A CONDITON OF THIS GUARANTEE;

That any defective parts are returned to the organization at the Purchaser's expense and in respect of parts or components not of the organization manufacture, the organization guarantee shall be limited to the guarantee, if any, which we may have received from the supplier of such parts or components in respect thereof so that the organization liability in terms of such guarantee shall be no greater than the organization liability in terms of the organization own guarantee as set out in this clause;

That the organization shall be given reasonable time and opportunity to comply with the terms of the guarantee before you call upon the organization to pay any sums in respect of liquidated damages;

And, save as provided in this clause, the organization shall be under no liability,

whether in contract, delict or otherwise in respect of defects in goods delivered, or for any injury, damage or loss resulting from defect or from any work done in connection therewith.

## PATENTS

The organization will indemnify the Purchaser against any claim of infringement of Letters Patent or Registered Design (published at the date of the Contract) by the use or sale of any article or material supplied by the organization to the Purchaser and against all costs and damages which the Purchaser may incur in any such action.

Provided always that this indemnity shall apply to an infringement which is due to the organization having followed a design or instruction furnished or given by the Purchaser, or to the use of such articles or material in a manner or for a purpose or in a foreign country not specified by or disclosed to the organization, provided that this indemnity is conditional on the Purchaser giving the organization the earliest possible notice in writing of any claim being made or action threatened or brought against the Purchaser and on the Purchaser permitting the organization at the organization own expenses to conduct any litigation that may ensue and all negotiations for a settlement of the claim.

The Purchaser on their part warrant that any design or instruction furnished or given by the Purchaser shall not be such as to cause the organization to infringe any Lenders Patent, Registered Design or Trade Mark in the execution of the Purchaser's order. solely to the terms of its guarantee.

## LEGAL CONSTRUCTION

Contracts entered with the organization shall be interpreted and construed in accordance with the laws of the Republic of South Africa whose courts shall have jurisdiction in respect of any dispute whatsoever.

## LEGAL JURISDICTION

In terms of Section 45 of the Magistrates Court Act of 1944 the Purchaser consents to the jurisdiction of any Magistrates Court by Section 20 of the said Act, notwithstanding

We assume no responsibility for any printing errors.

The listed prices are valid until 30/09/2025 or until a new price list is available.

Prices are based on full pallet deliveries.

Delivery codes: **A** = max. 2 weeks  
**B** = max. 8 weeks  
**C** = > 8 weeks

that any Claim against the Purchaser may exceed the jurisdiction of such Magistrates Court It is recorded that the organization is not bound hereby and shall be entitled to institute any proceedings against the Purchaser out of any other Court of competent.

**AVK Valves Southern Africa**

10 Chris Street, C/O Chris and  
Garfield Road, Alrode  
1451 Alberton, South Africa  
+27 11 908 3760  
sales@avkvalves.co.za  
©05.2025 AVK Group

AVK Valves Southern Africa  
Unit 6, 6 Paris Road,  
Brackengate Business Park  
7441 Cape Town  
+27 21 981 4414  
www.avkvalves.co.za

